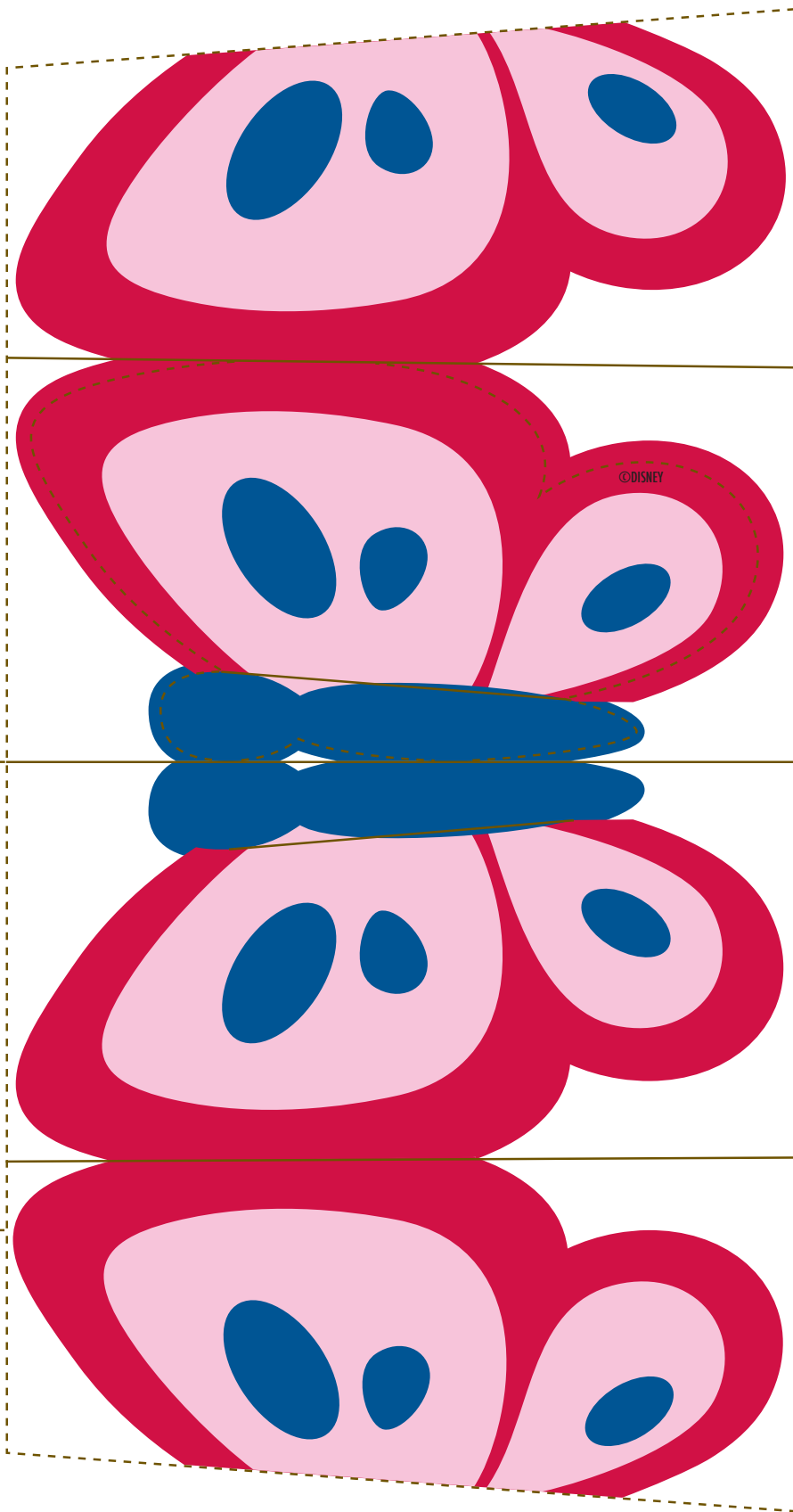
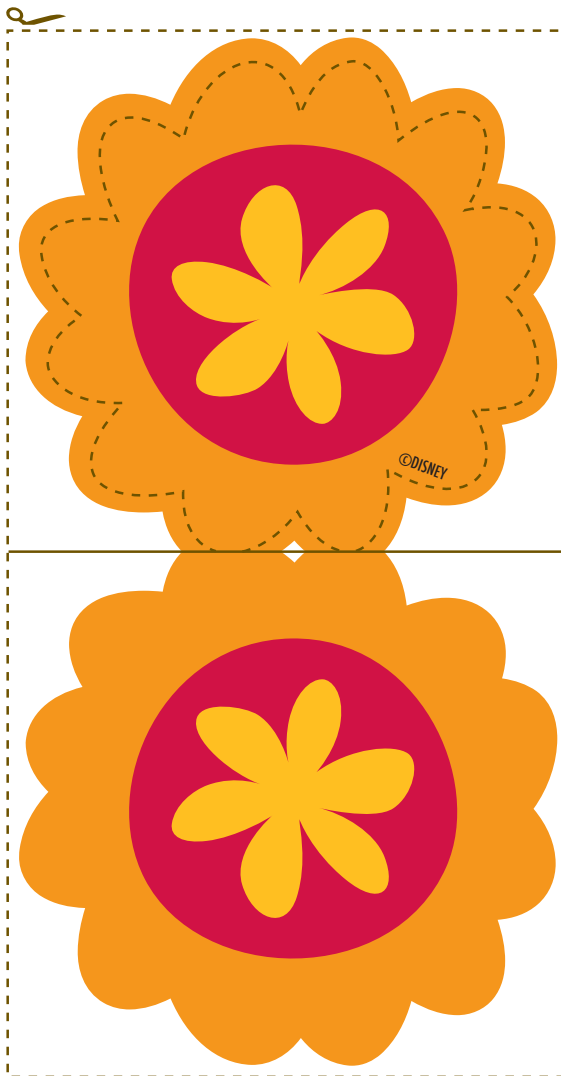
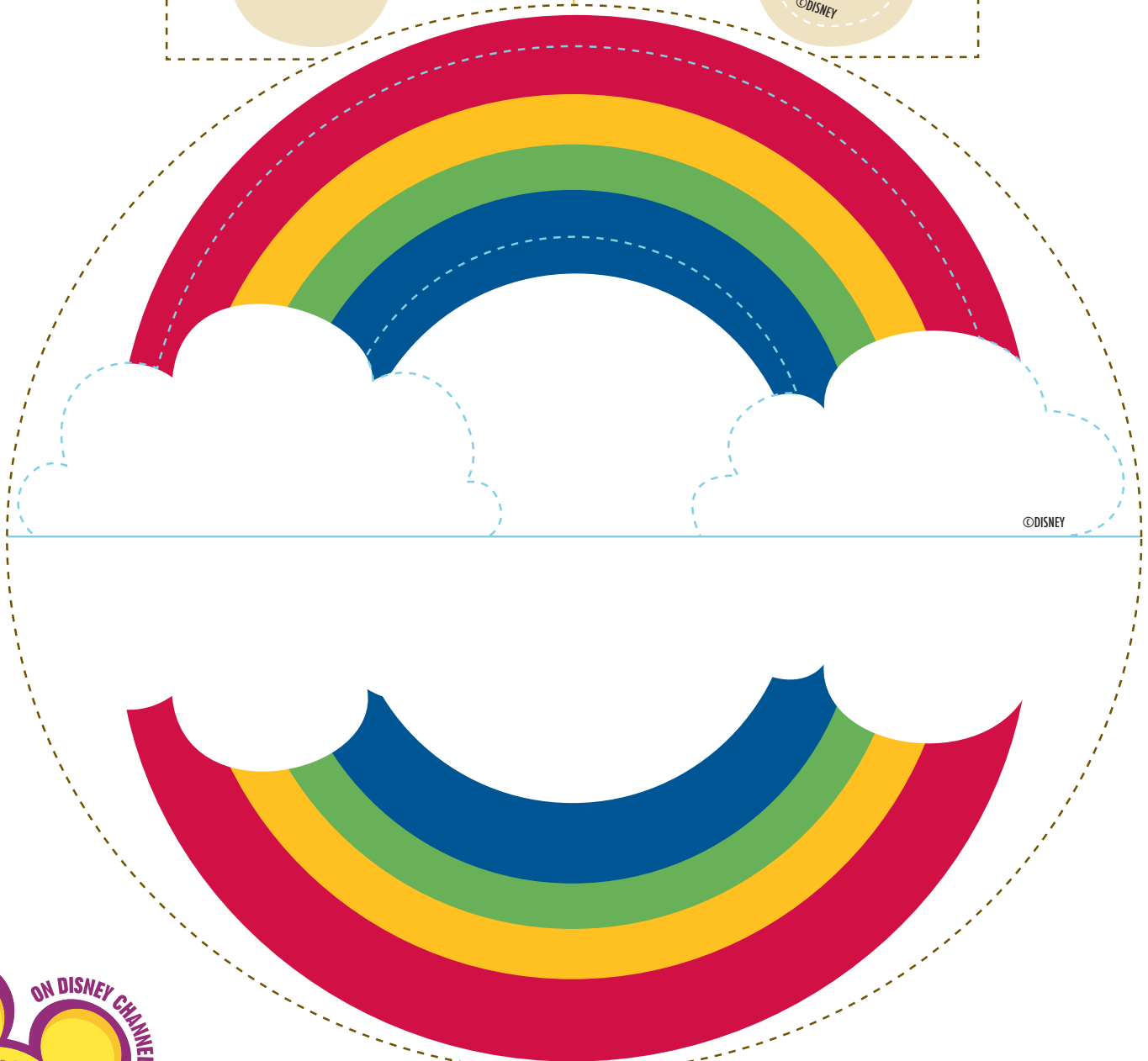
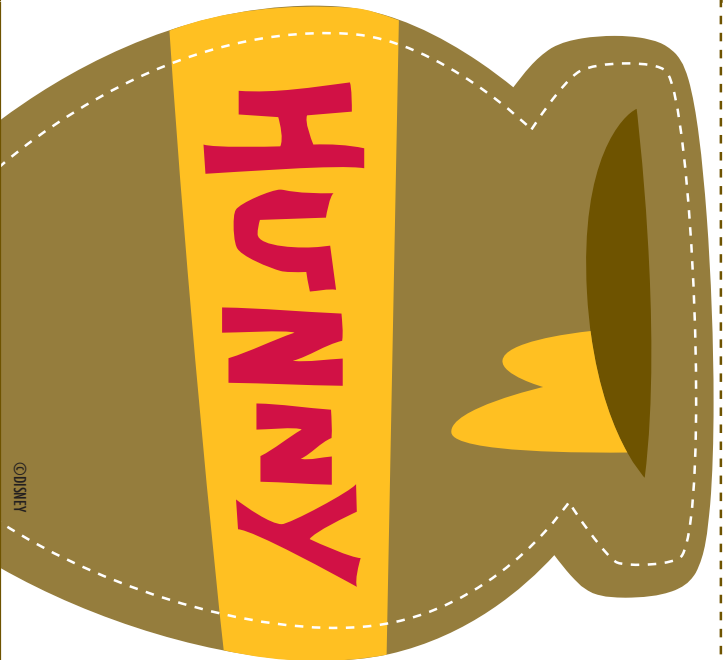
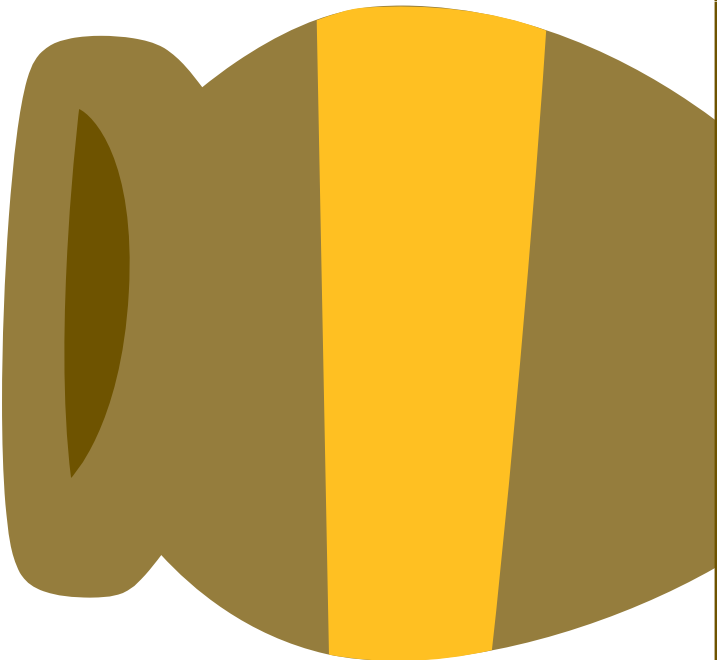
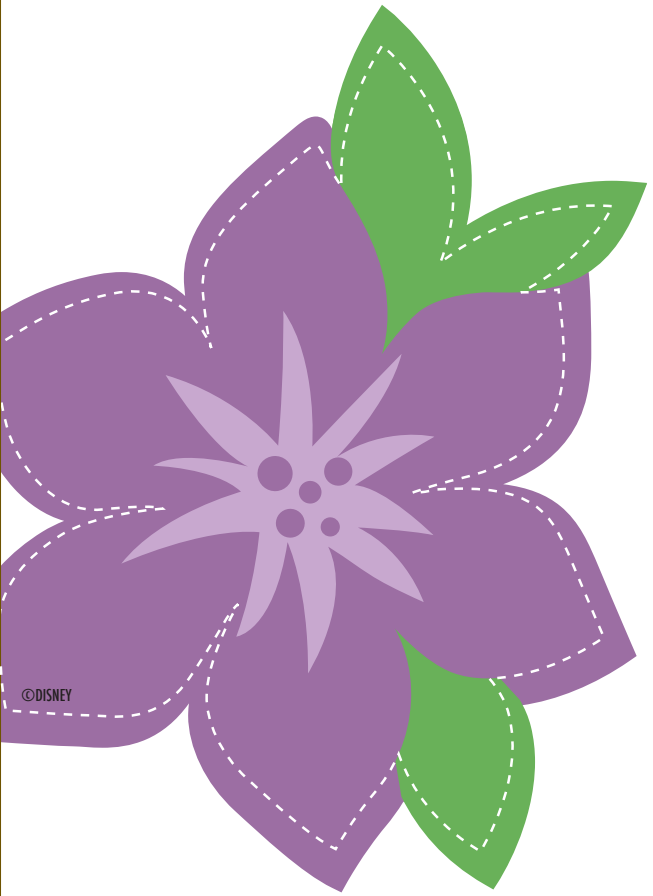
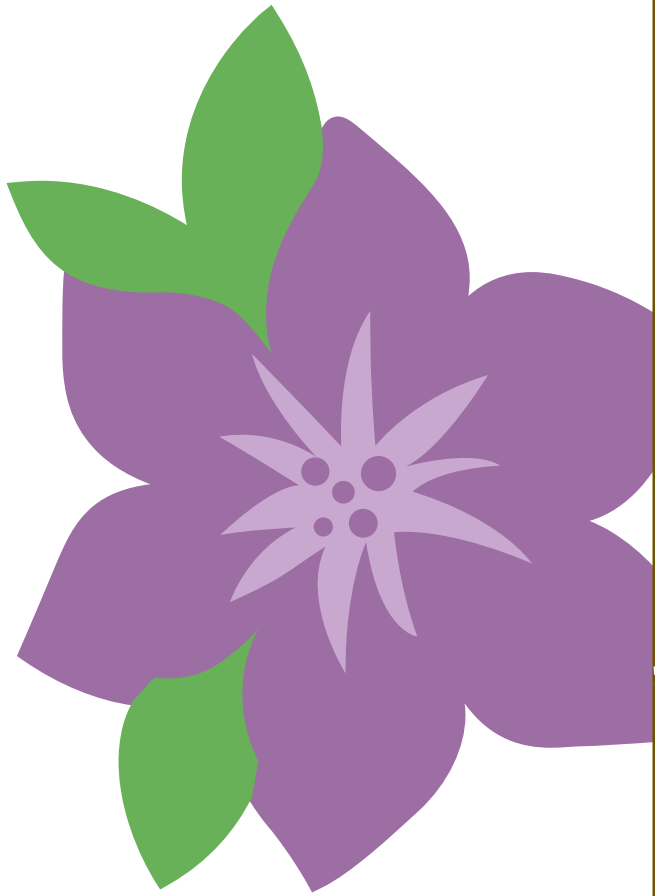
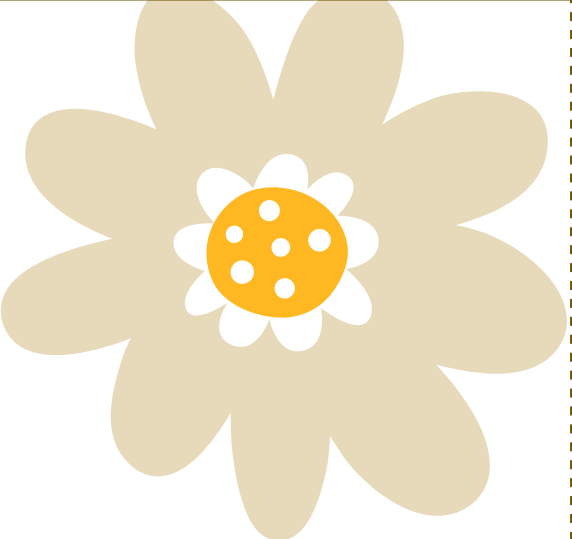
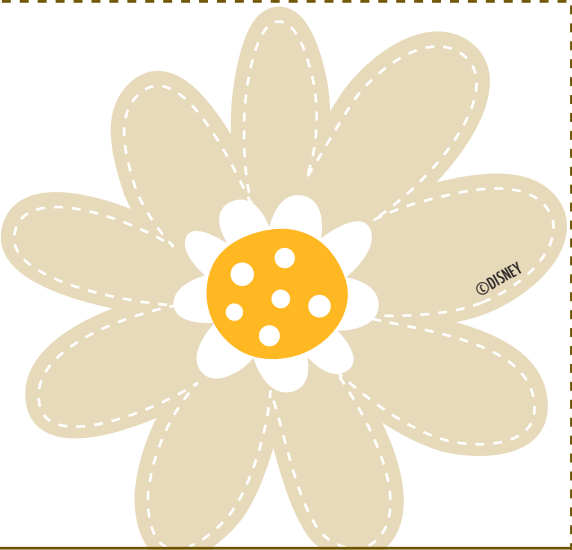
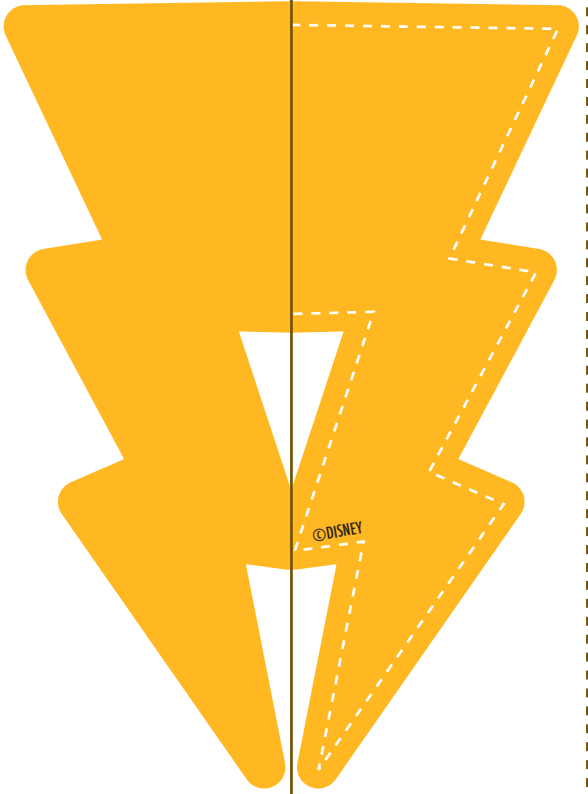


----- cut  
————— score











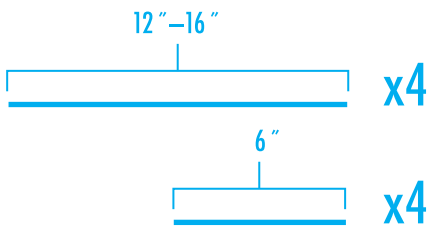
## MATERIALS

- Scissors or cutting tool
- Metal-edged ruler
- Butter knife
- Multipurpose glue
- Small hole punch
- String or thread

## INSTRUCTIONS

NOTE: Project assembly is intended for adults only.

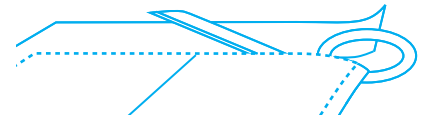
- 1 Print out pages and allow to dry. Then Cut four pieces of string between 12" and 16" long, and four pieces of string 6" long.



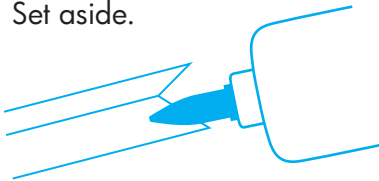
- 2 Using a ruler as a guide, run the back side of a butter knife firmly along the solid lines of all mobile pieces.



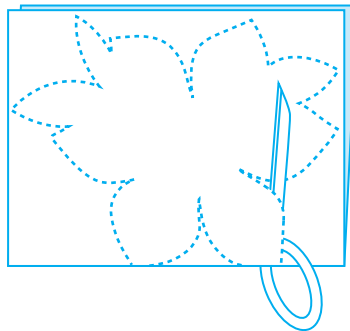
- 3 Using scissors or a cutting tool, cut along dashed lines around the outside of all pieces, as well as between bands.



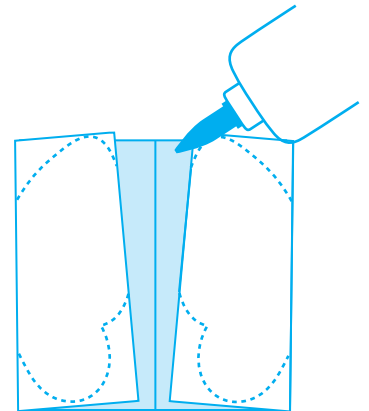
- 4 Fold band pieces in half on solid lines and glue in place. Allow to dry completely. Then punch four holes in each band where indicated. Set aside.



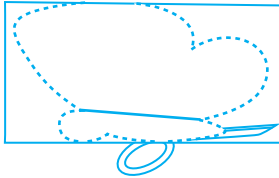
- 5 Fold all other pieces in half (except butterfly) and cut out along the dashed lines that create shapes. Set aside.



- 6 Fold outer wings of butterfly inward on scored lines and glue in place.



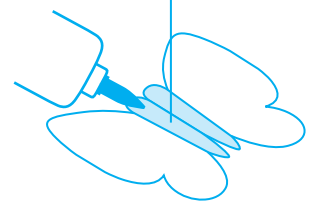
- 7** Fold entire butterfly in half on center scored line and cut out along the dashed lines.



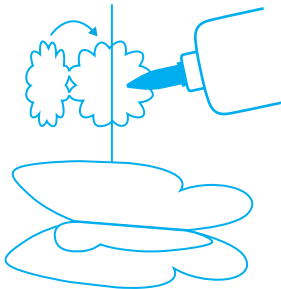
- 8** Pinch body between fingers, and fold wings downward on scored lines.



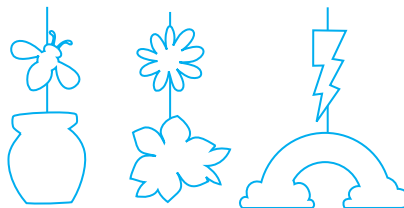
- 9** Dot glue between the two sides of the body, insert the end of a piece of string and glue in place.



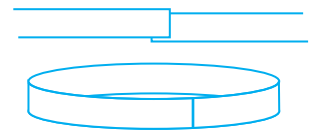
- 10** Fold the yellow flower around the string a few inches above the butterfly and glue in place. Set aside.



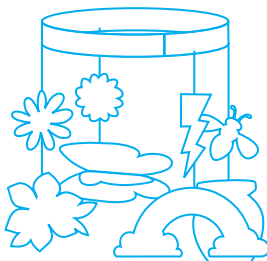
- 11** Dot glue between the two sides of the purple flower, insert the end of a piece of string and glue in place. Repeat with honey jar and rainbow. Fold the white flower around the string a few inches above the purple flower and glue in place. Repeat with bumble bee and lightening bolt.



- 12** Place the two bands end to end, flowered side facing up. Overlap ends to form ring and glue in place. Allow to dry completely.



- 13** Attach the loose end of each art-filled string to a hole at the bottom of the ring.



- 14** Attach one of the 6" pieces of string to one of the holes at the top of the ring. Repeat with remaining three 6" strips. Tie these together into a loop. Hang the mobile where desired.

