



Space Guard Patrol Craft

What You'll Need:

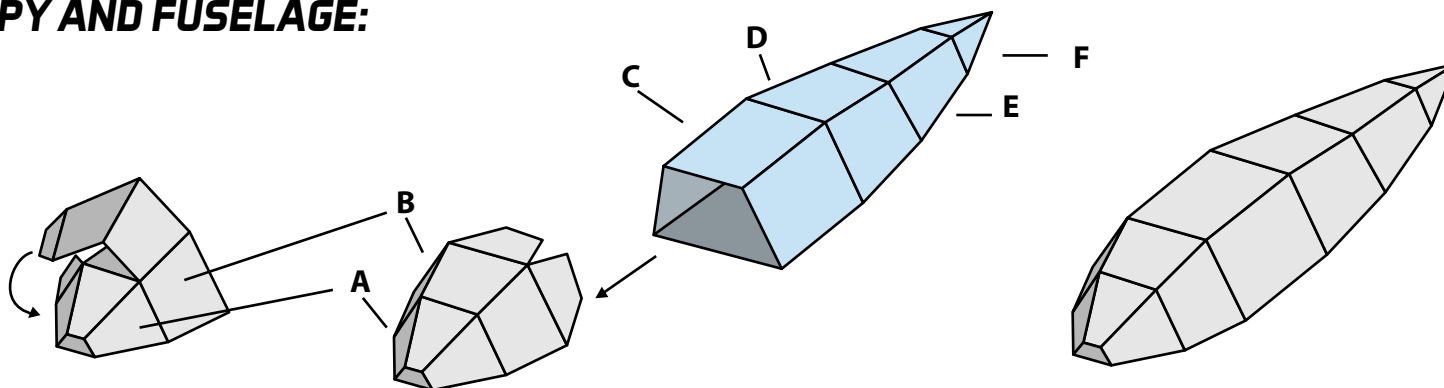
- 8 1/2"x 11" paper or cardstock (we recommend 110-pound paper for best results)
- Scissors, ruler, tape, glue

How to Make It:

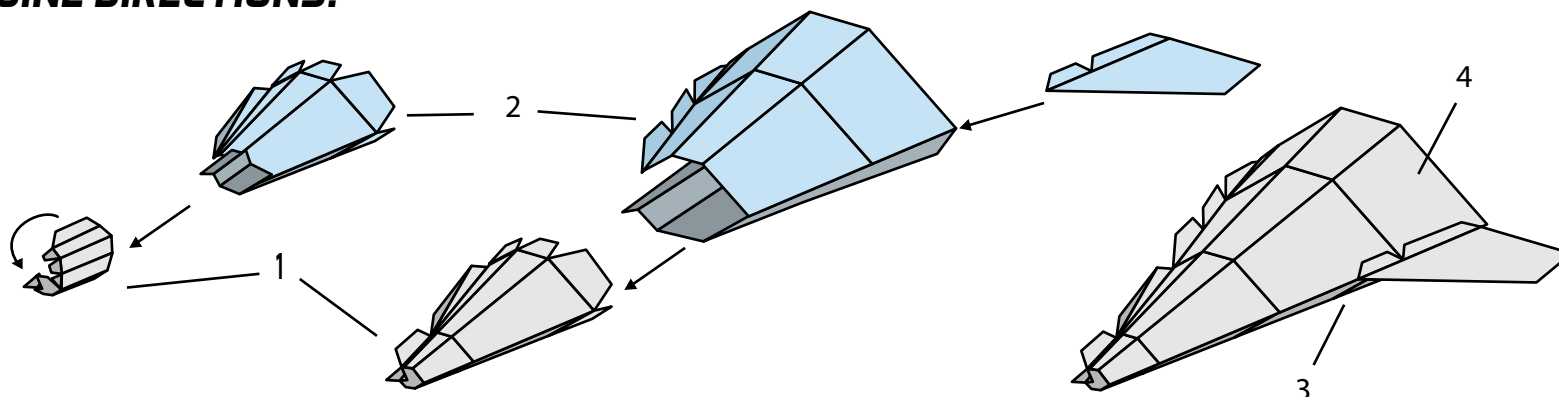
- Print out the pages on regular paper or cardstock.
- Have a grown-up cut out all the pieces (cut on solid lines only).
- Fold along the dashed lines (you can use a ruler to ensure edges are straight).
- Glue or tape tabs and sections to the different parts.

REMINDER: CUTTING IS INTENDED FOR GROWN-UPS ONLY!

CANOPY AND FUSELAGE:

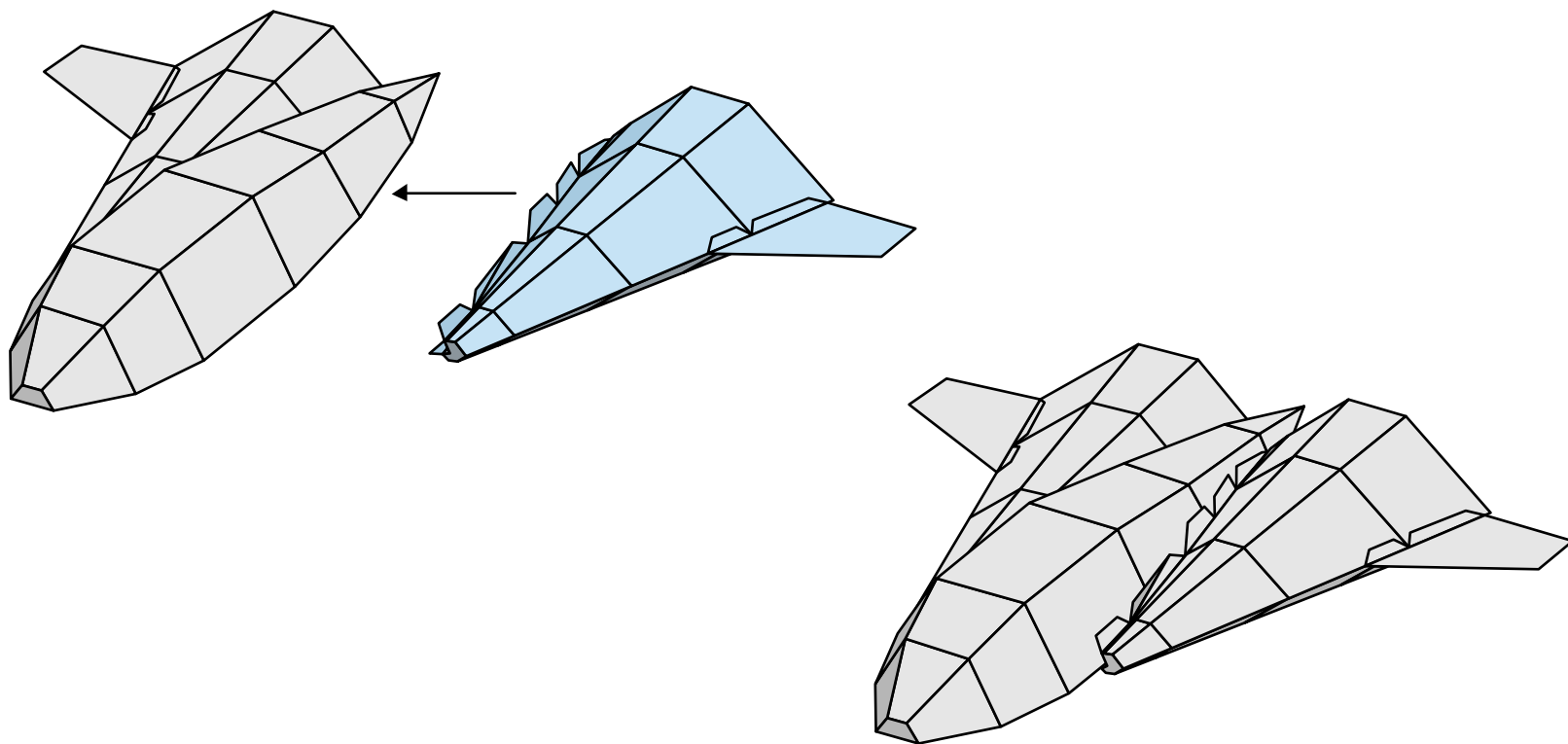


ENGINE DIRECTIONS:



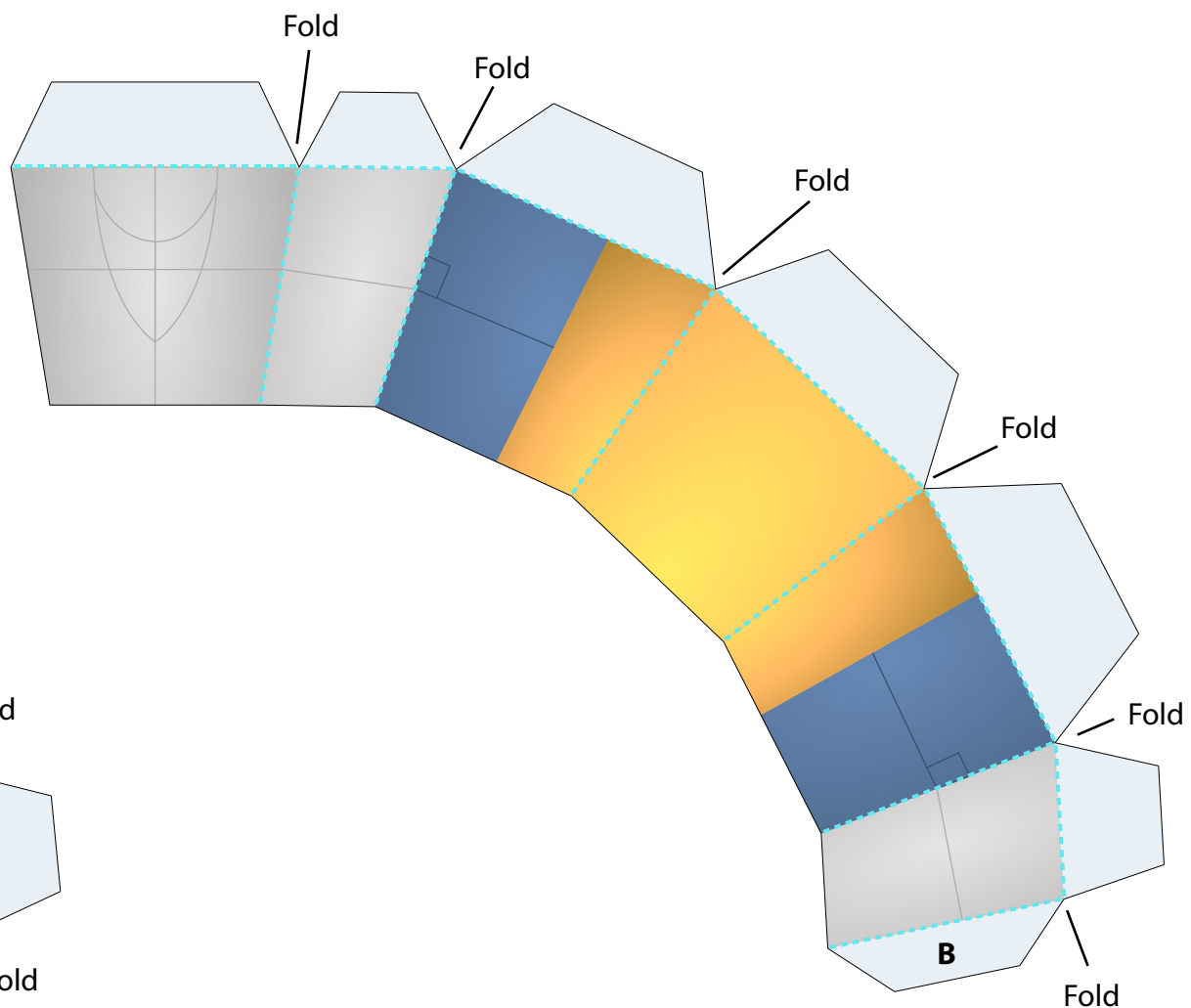
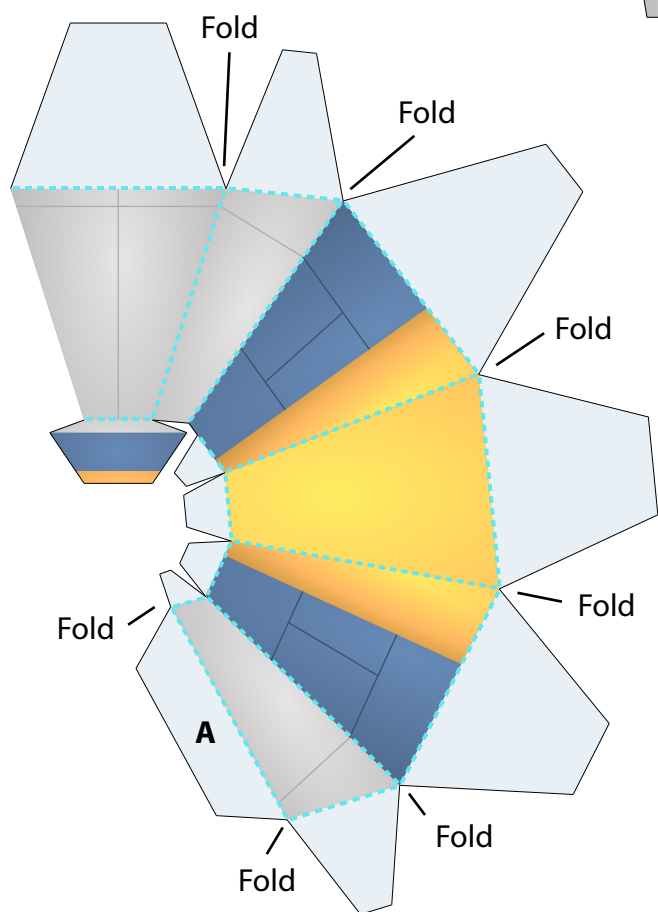


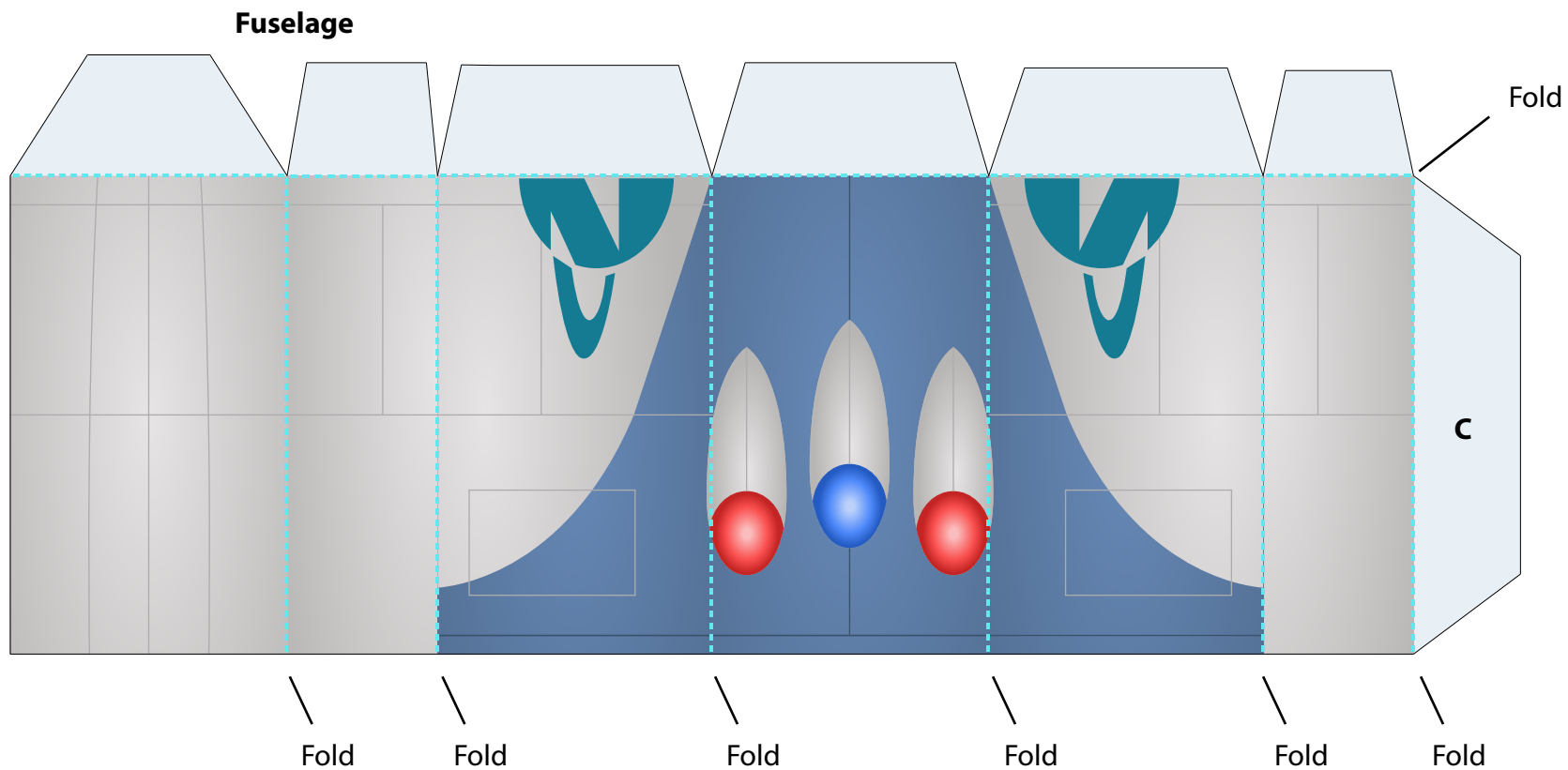
ATTACH ENGINES TO FUSELAGE:





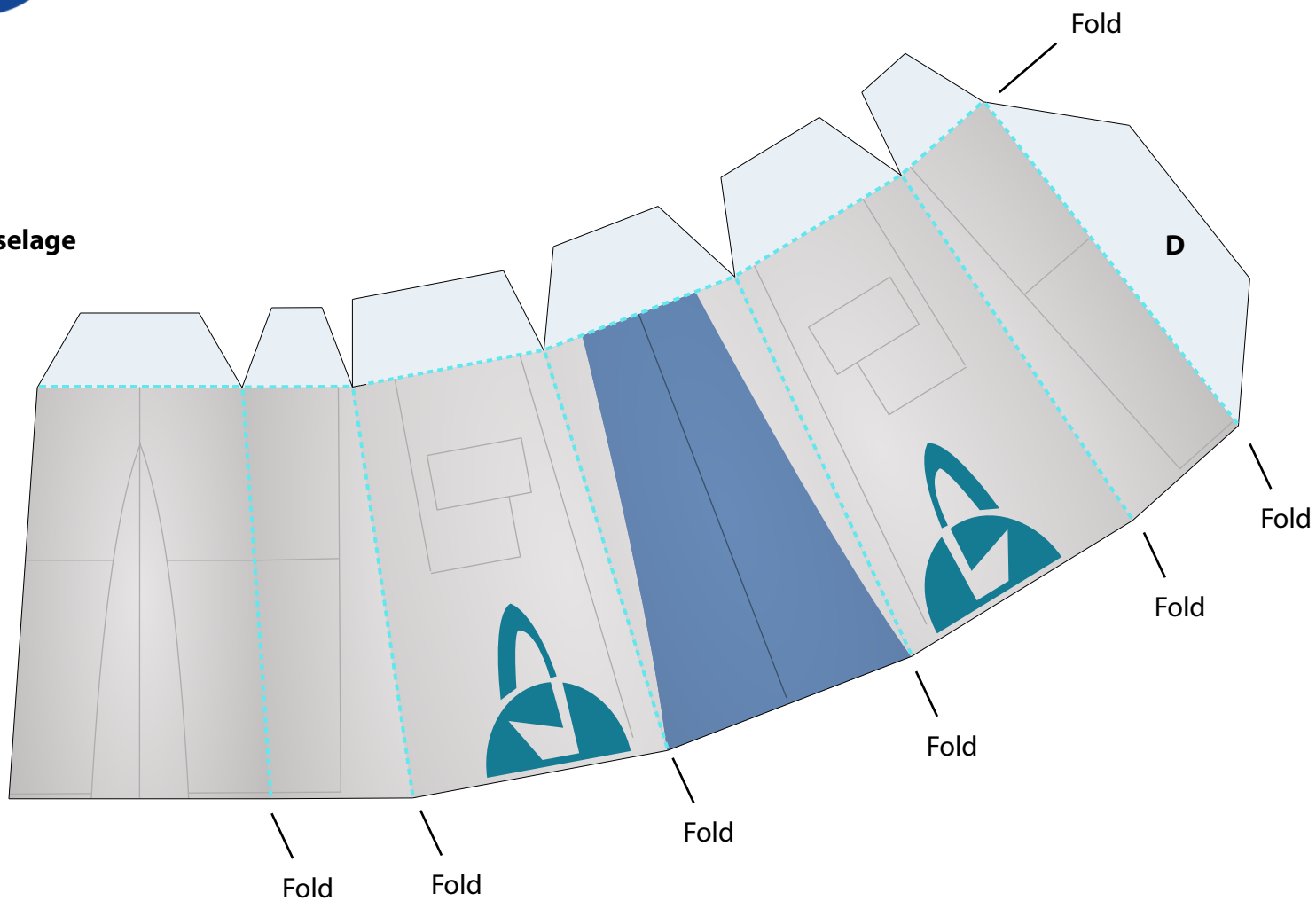
Canopy

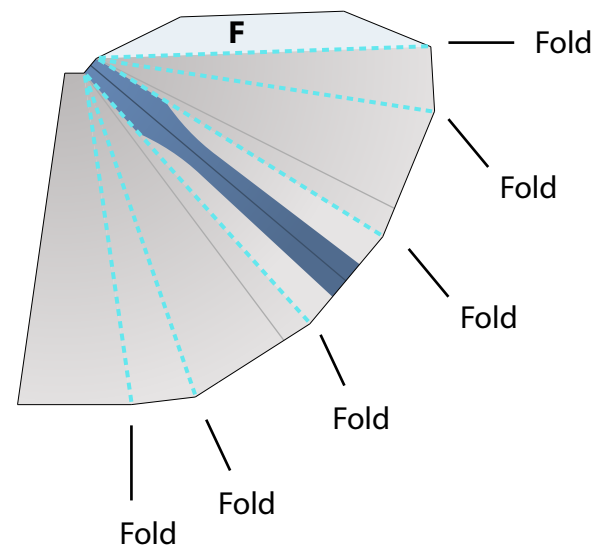
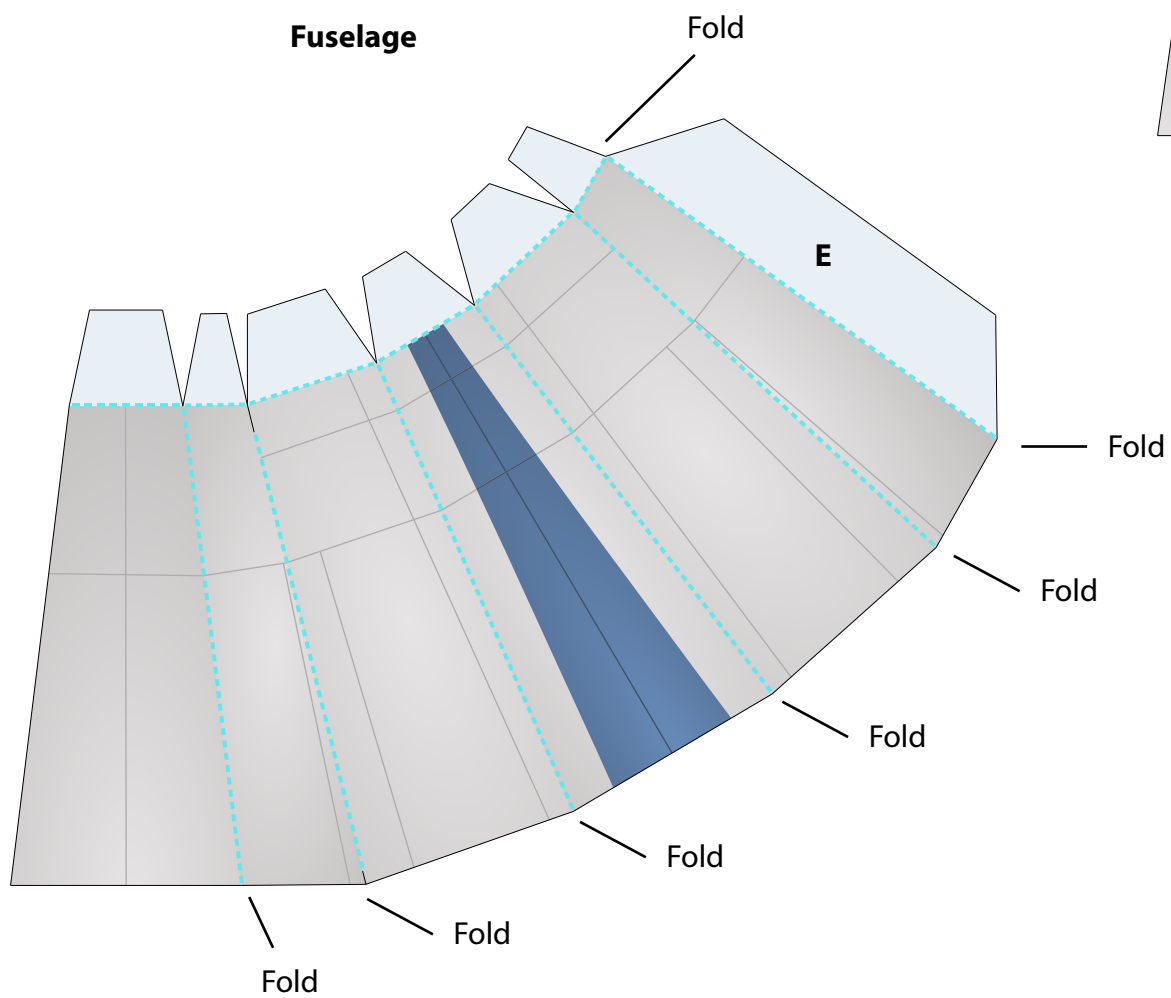






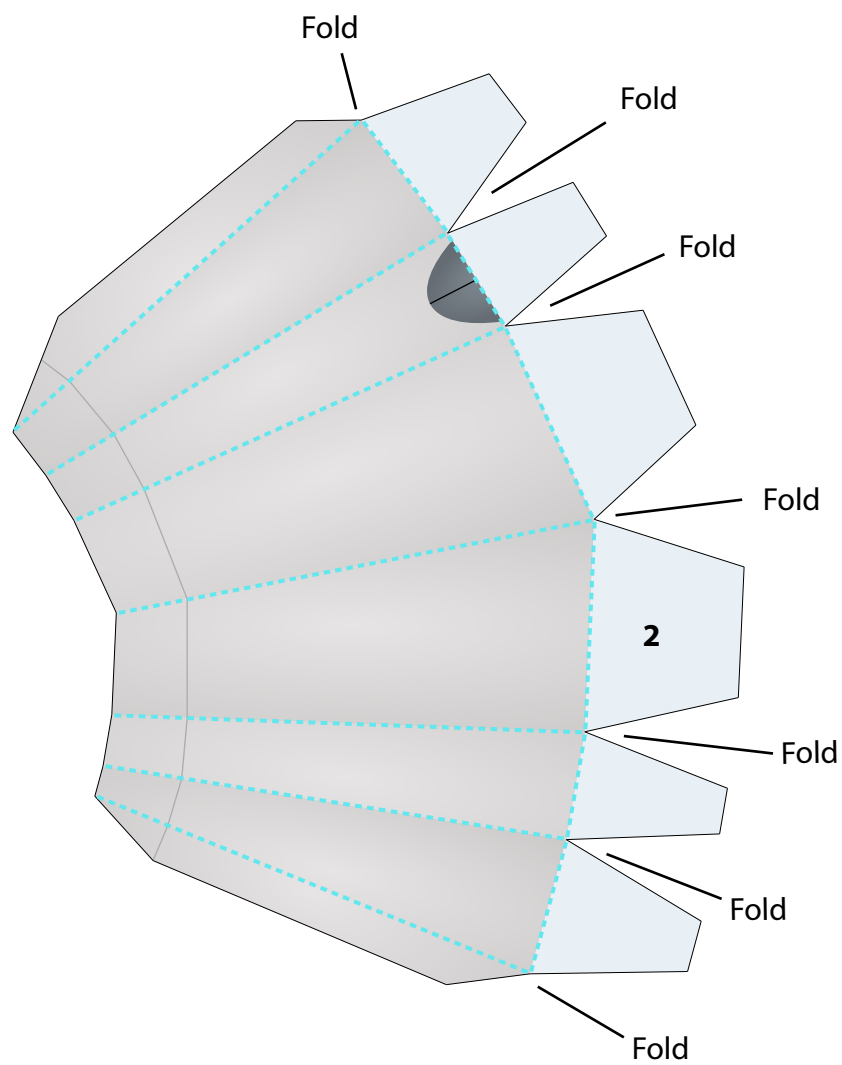
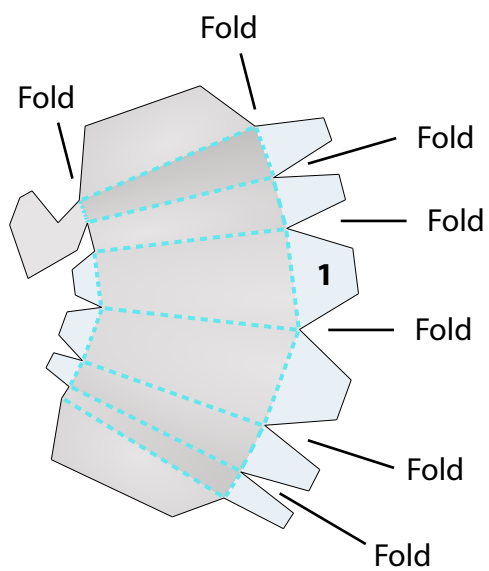
Fuselage

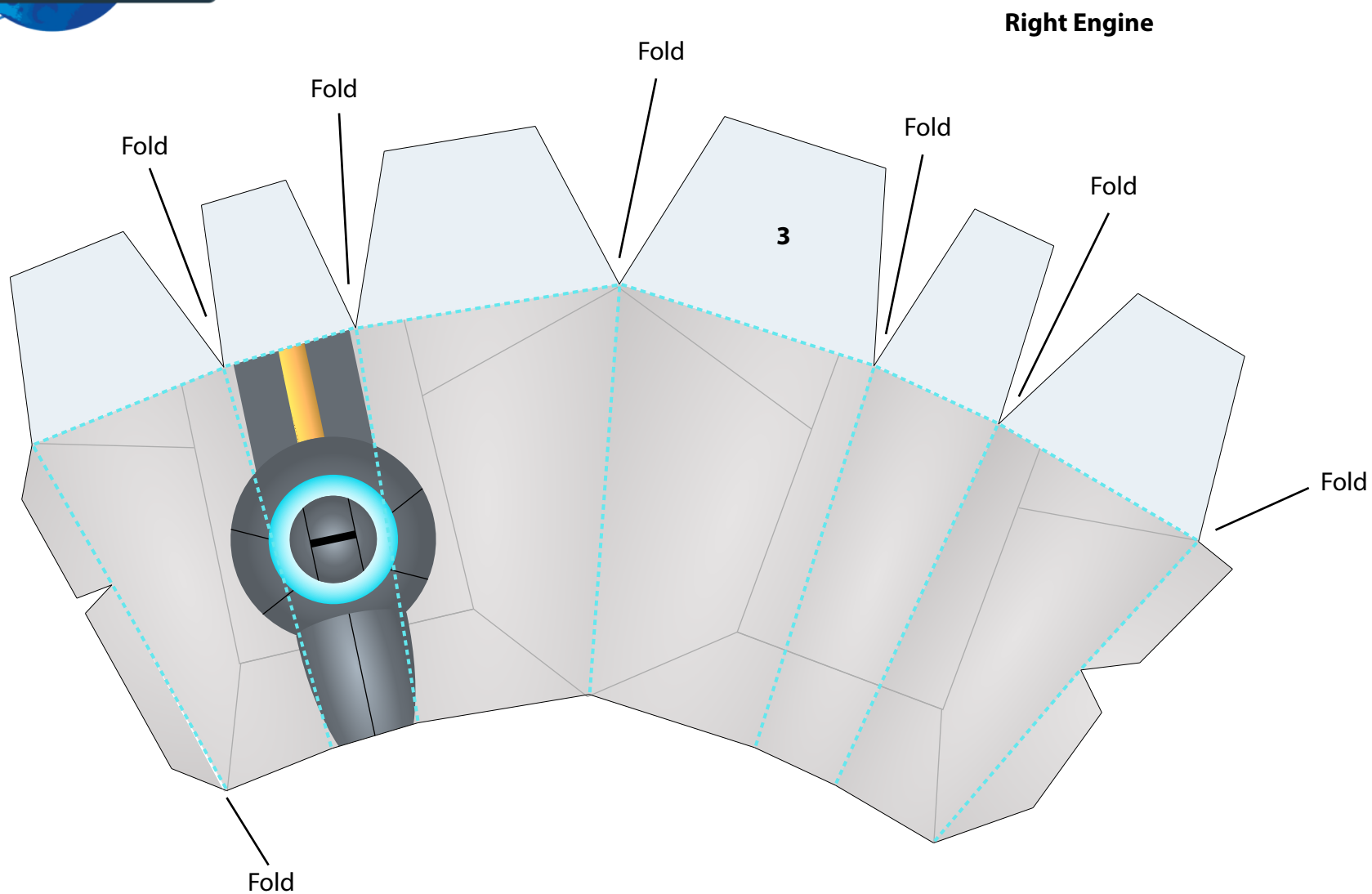


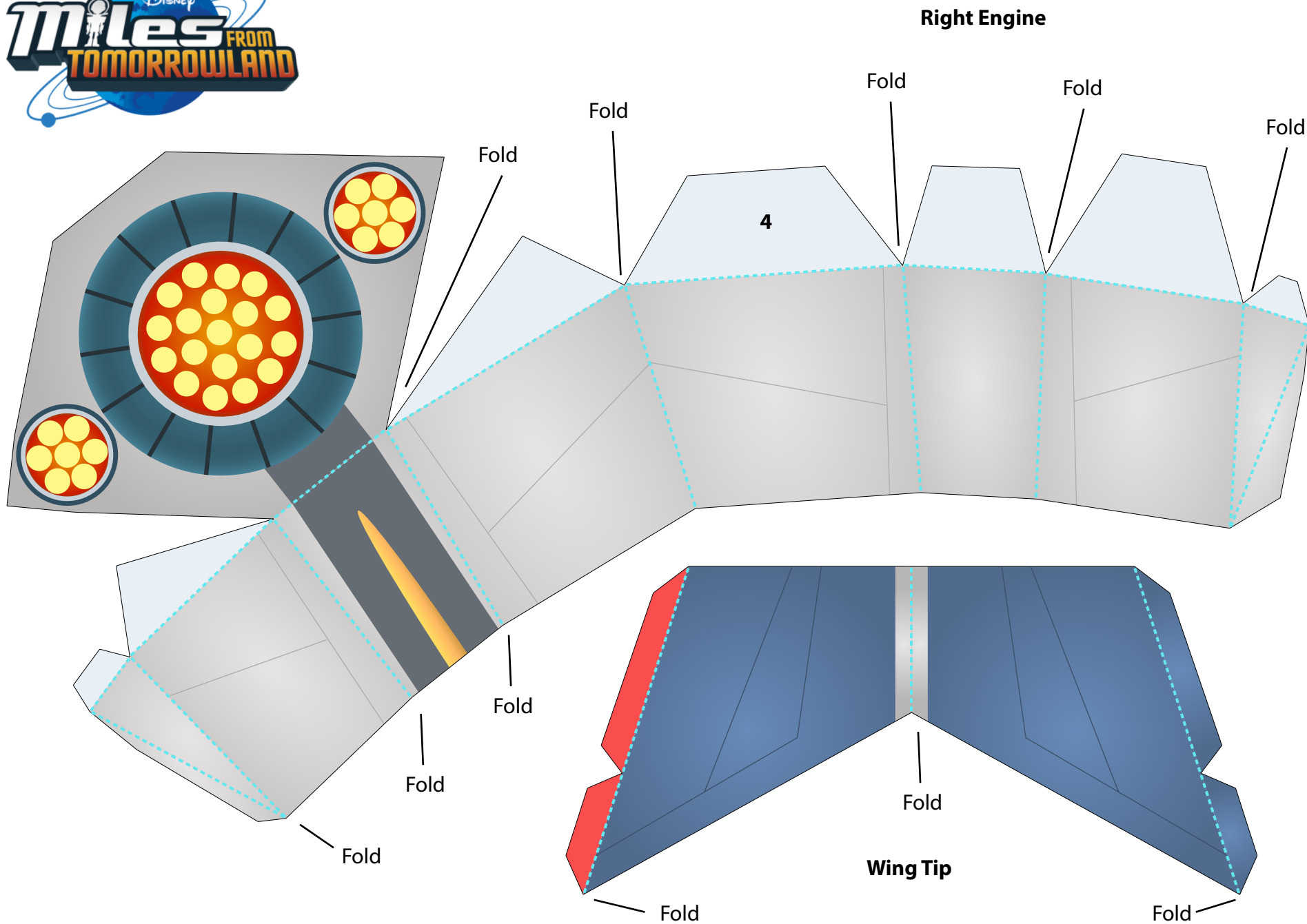


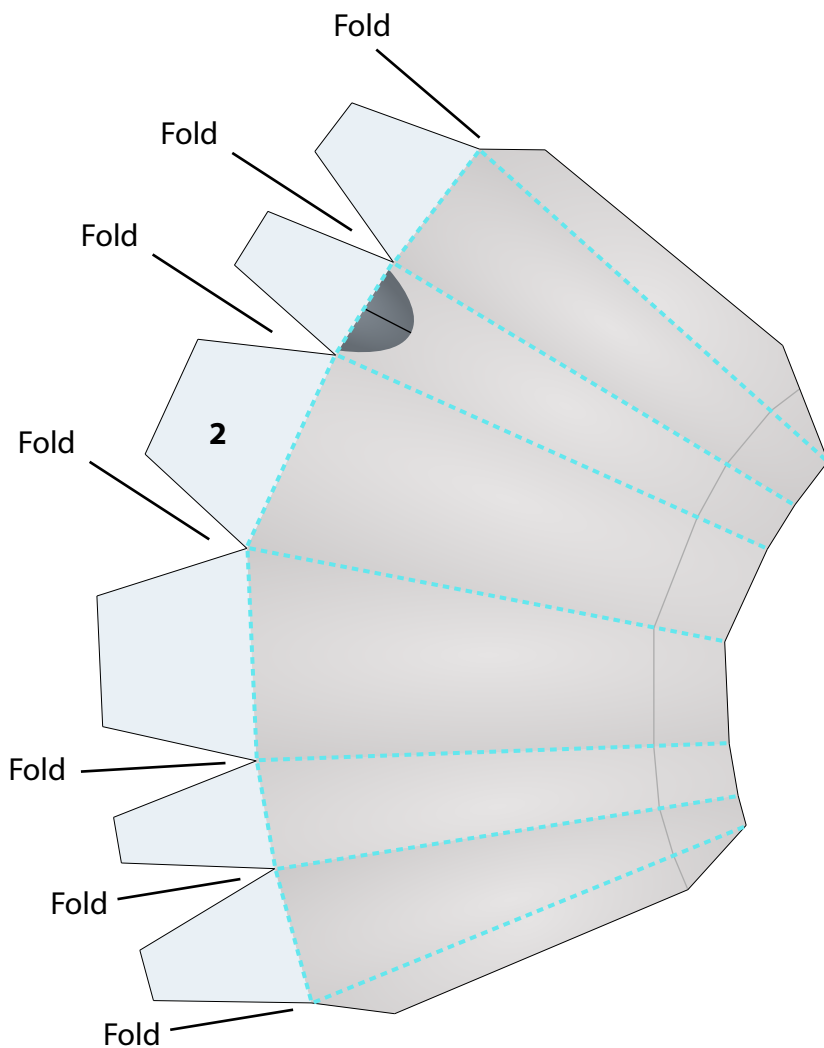


Right Engine









Left Engine

