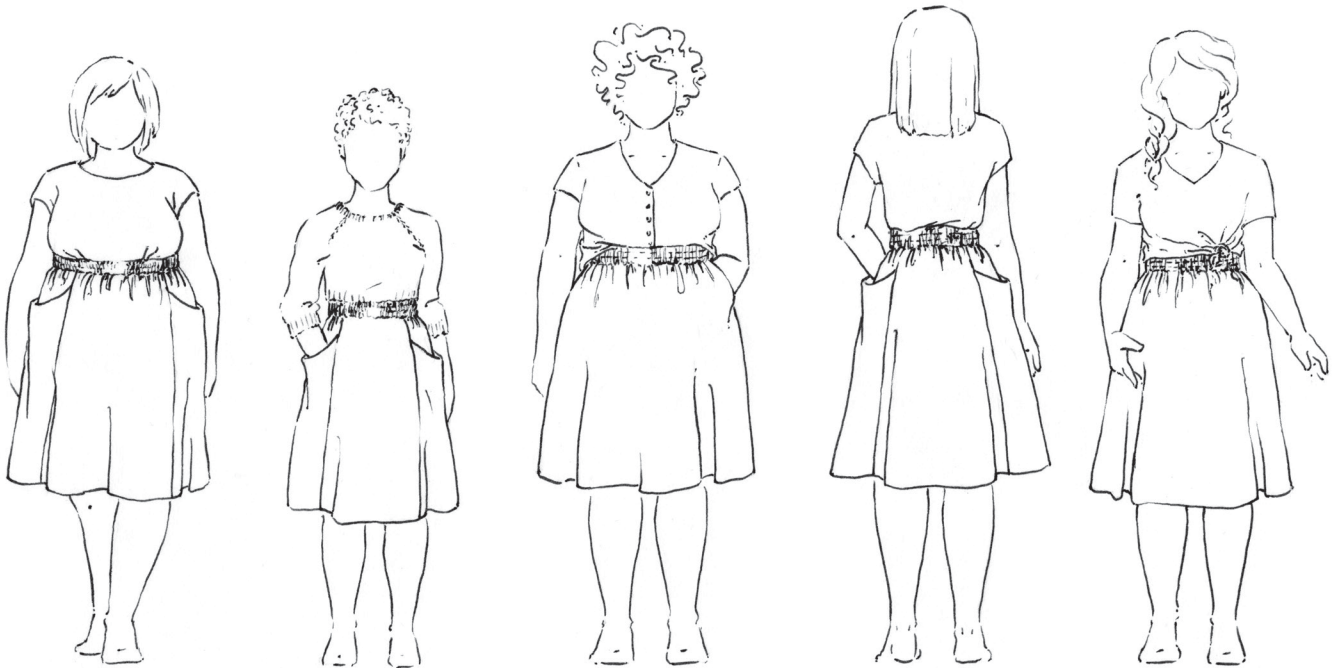


# G Y P S U M S K I R T



S E W  
L I B E R A T E D

# GYPSUM SKIRT INSTRUCTIONS

Thank you for purchasing the digital version of the Gypsum Skirt pattern. It can be printed at your home, your office, or a print shop. If you have used a PDF pattern before, the process should be familiar. This document contains the instructions. There are separate pattern piece files that you can print either at "HOME" on letter- or A4- paper or print at a commercial "PRINT-SHOP" on full-scale A0- and A1-size pages.

For tips, including recommended print shops and how to print a specific size, see [sewliberated.com/using-digital-patterns](https://sewliberated.com/using-digital-patterns). Pattern piece size lines can be much easier to follow when you only print specific sizes. You can hide unused size layers by using [Adobe's PDF layers feature](#). (We recommend always printing a size above and below your own, for context and small fit adjustments.)

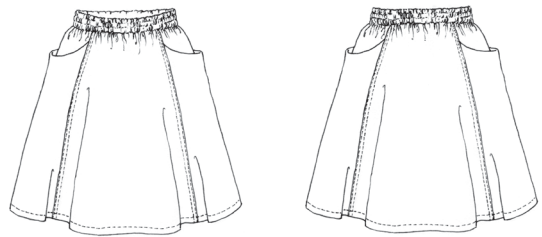
X X X X X X X X X X X X

Here is a suggested workflow:

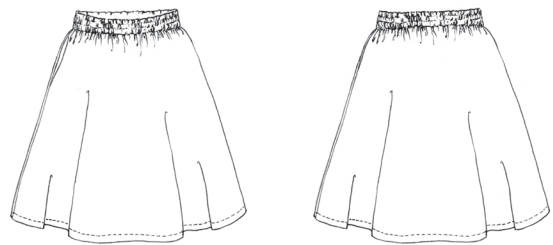
1. Print this PDF file, the instructions, starting with page 2. (Or just read it on a screen.)
2. **Choose either View A or View B of the Skirt.** View A has unique, crescent-shaped pockets sewn with French seams and four flat-felled panels. View B is the perfect introduction to garment sewing (or just a quick sew) with the same shape as View A, but but with inseam side pockets and simple front and back panels.
3. If printing at a commercial print shop, which we recommend, send them **ONE OF** the PRINT-SHOP PDFs (2 A0-size pages for sizes 0-24 OR 2 A0- plus 1 A1-size pages for sizes 22-34) ) and skip to step 6. (See [sewliberated.com/using-digital-patterns](https://sewliberated.com/using-digital-patterns) for reasonably-priced and reliable online options.)
4. If printing at home, open either the View A or the View B file for your size and calibrate your printer with the test box on page 1 of the "HOME" PDF.

*This is an important step to avoid errors when printing the pattern tiles. Print this page at 100% with **no page scaling**, and measure the test box. If it is not the right size, adjust your printer settings, in particular being sure that 'Page Scaling' is set to 'None'.*

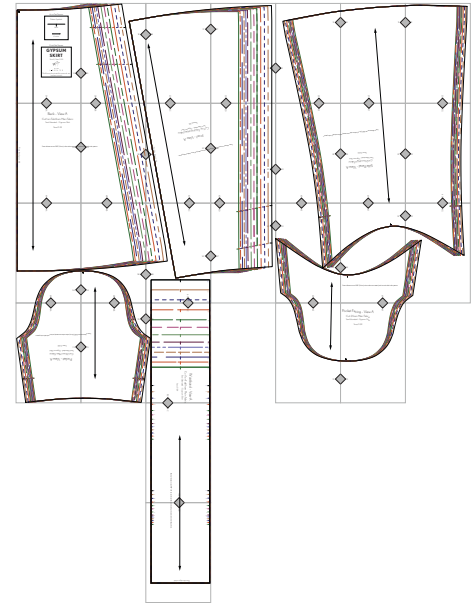
View A Front and Back



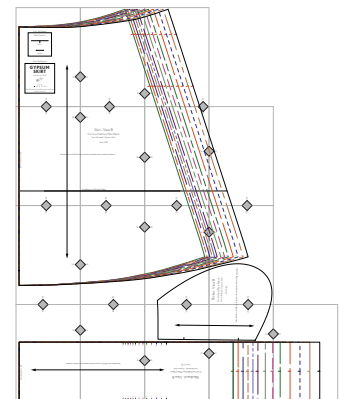
View B Front and Back



Print at Home Tiles, View A, Sizes 0-24

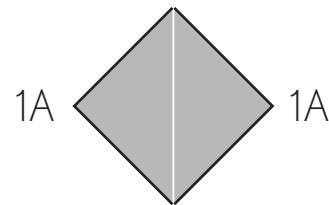


Print at Home Tiles, View B, Sizes 0-24



5. Print the rest of the "HOME" PDF for View A or View B and your size. (Again, see [sewliberated.com/using-digital-patterns](https://sewliberated.com/using-digital-patterns) for tips.)
6. Assemble the pattern piece tiles.

*To assemble, line up the labeled diamonds: Fold back or cut one page's margin and slide the other page behind it. You can tape them. Your assembled pattern sheet should look like a big version of one of the diagrams to the right:*



7. Trace and cut out the pattern pieces (with your tracing paper).
8. Follow the instructions to make your Gypsum Skirt.
9. Wear and enjoy!

Please take a picture and share your work with us on social media, using the hashtags #SewLiberated and #GypsumSkirt. If we made a mistake or could have made this creative experience smoother for you, let us know: [support@sewliberated.com](mailto:support@sewliberated.com).

We have many other patterns available at [SewLiberated.com](https://SewLiberated.com) and you can make your Gypsum Skirt part of a capsule wardrobe. Learn how by enrolling in [Meg's Mindful Wardrobe online course at courses.sewliberated.com](https://courses.sewliberated.com).

Thanks for supporting indie designers!

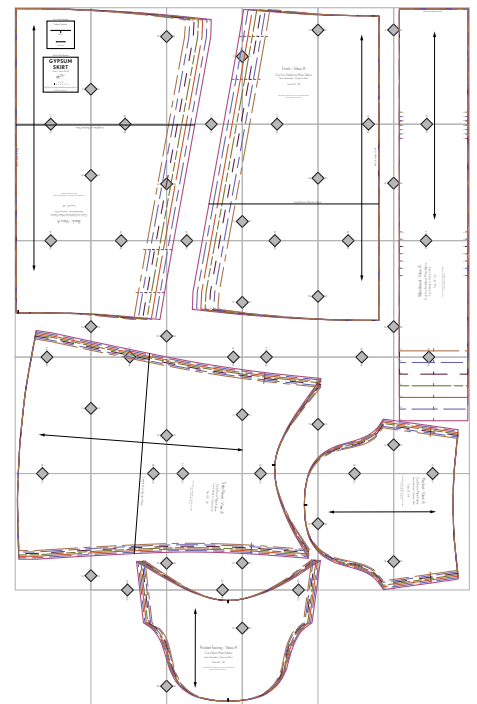
## Our Team

Design: Meg McElwee  
 Editing: Judith Henrikson  
 Grading: Stacey East  
 Layout: Patrick McElwee  
 Illustrations: Mia Lucero and Judith Henrikson  
 Photography: Anna Carson DeWitt  
 Models: Ashley McIntyre and Meg Anderson  
 And a big thanks to all our testers!

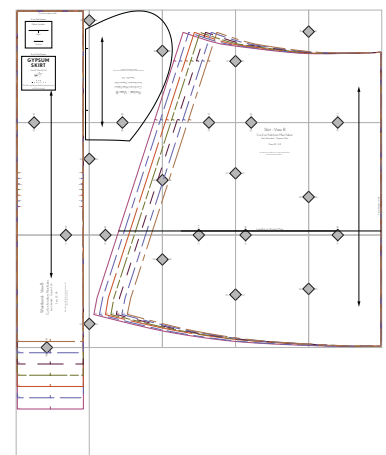
© Sew Liberated 2021

Not licensed for commercial production.

### Print at Home Tiles, View A, Sizes 22-34



### Print at Home Tiles, View B, Sizes 22-34





The Gypsum Skirt is the skirted sister of the Arenite Pants - same ridiculously comfortable waistband and drapery pockets, more flounce. Layer it under or over dresses, wear it with a boxy top or cami, and shorten or lengthen the pattern depending on the season and your style.

**View A** has unique, crescent-shaped pockets, sewn with French seams and four flat-felled panels. View A is great for adventurous beginners to advanced sewists, or anyone looking to expand their skills.

**View B** is the perfect introduction to garment sewing (or just a quick sew) with the same shape as View A, but with inseam side pockets and simple front and back panels.



**All seams are 5/8" (1.6 cm) unless otherwise stated.**

**Seam allowances are included in the pattern pieces.**

**For the best results, read the instructions completely before beginning your project.**



## Fabric and materials recommendations

The Gypsum Skirt is designed for woven fabrics. For View A, look for rayon challis, tencel twill, silk noil, or other fabric with fantastic drape. View B can handle a slightly stiffer woven fabric in addition to those recommended for View A. Good possibilities include mid-weight linen, double gauze, cotton ikat, and lightweight denim.

### For View A:

45" (115 cm)-wide fabric: 3-1/4 yards (3 m)

54" (137 cm)-wide fabric: 2-3/4 yards (2.5 m) for sizes 0-22 and 3 yards (2.75 m) for sizes 24-34

### For View B:

45" (115 cm)-wide fabric is not wide enough and cannot be used.

54" (137 cm)-wide fabric: 3-1/4 yards (3 m) for sizes 0-22 and 3-1/2 yards (3.2 m) for sizes 24-34

## Notions

- Elastic, 2" wide. We recommend Dritz soft elastic.
- Wonder tape (optional)

## Fitting

Find your closest size on the following chart - your hip measurement is key, as the waist can be adjusted to fit snugly with your elastic waistband. If your waist measurement is larger than your hip measurement, go with your waist measurement.



## Your Measurements - The Gypsum Skirt was drafted for a height of 5'5" (165 cm)

| INCHES |      |      |      |      |      |      |      |      |      |      |      |      |      |      |      |      |      |      |
|--------|------|------|------|------|------|------|------|------|------|------|------|------|------|------|------|------|------|------|
| SIZE   | 0    | 2    | 4    | 6    | 8    | 10   | 12   | 14   | 16   | 18   | 20   | 22   | 24   | 26   | 28   | 30   | 32   | 34   |
| WAIST  | 25   | 26   | 27   | 28   | 29   | 30   | 31.5 | 33   | 34.5 | 36.5 | 38.5 | 40.5 | 42.5 | 44.5 | 46.5 | 48.5 | 50.5 | 52.5 |
| HIP    | 33.5 | 34.5 | 35.5 | 36.5 | 37.5 | 38.5 | 40   | 41.5 | 43   | 45   | 47   | 49   | 51   | 53   | 55   | 57   | 59   | 61   |

| CENTIMETERS |    |    |    |    |    |    |     |     |     |     |     |     |     |     |     |     |     |     |
|-------------|----|----|----|----|----|----|-----|-----|-----|-----|-----|-----|-----|-----|-----|-----|-----|-----|
| SIZE        | 0  | 2  | 4  | 6  | 8  | 10 | 12  | 14  | 16  | 18  | 20  | 22  | 24  | 26  | 28  | 30  | 32  | 34  |
| WAIST       | 64 | 66 | 69 | 71 | 74 | 77 | 81  | 84  | 87  | 93  | 98  | 103 | 108 | 113 | 118 | 123 | 128 | 133 |
| HIP         | 85 | 88 | 90 | 93 | 95 | 98 | 102 | 106 | 109 | 114 | 120 | 125 | 130 | 135 | 140 | 145 | 150 | 155 |

## Finished Measurements - The Gypsum Skirt is 26.5" (67.5 cm) long.

| INCHES |      |      |      |      |      |      |      |      |      |      |      |      |      |      |      |      |      |      |
|--------|------|------|------|------|------|------|------|------|------|------|------|------|------|------|------|------|------|------|
| SIZE   | 0    | 2    | 4    | 6    | 8    | 10   | 12   | 14   | 16   | 18   | 20   | 22   | 24   | 26   | 28   | 30   | 32   | 34   |
| WAIST  | 25   | 26   | 27   | 28   | 29   | 30   | 31.5 | 33   | 34.5 | 36.5 | 38.5 | 40.5 | 42.5 | 44.5 | 46.5 | 48.5 | 50.5 | 52.5 |
| HIP    | 54.5 | 55.5 | 56.5 | 57.5 | 58.5 | 59.5 | 61   | 62.5 | 64   | 66   | 68   | 70   | 72   | 74   | 76   | 78   | 80   | 82   |

| CENTIMETERS |     |     |     |     |     |     |     |     |     |     |     |     |     |     |     |     |     |     |
|-------------|-----|-----|-----|-----|-----|-----|-----|-----|-----|-----|-----|-----|-----|-----|-----|-----|-----|-----|
| SIZE        | 0   | 2   | 4   | 6   | 8   | 10  | 12  | 14  | 16  | 18  | 20  | 22  | 24  | 26  | 28  | 30  | 32  | 34  |
| WAIST       | 64  | 66  | 69  | 71  | 74  | 77  | 81  | 84  | 87  | 93  | 98  | 103 | 108 | 113 | 118 | 123 | 128 | 133 |
| HIP         | 138 | 141 | 144 | 146 | 149 | 151 | 155 | 159 | 163 | 168 | 173 | 178 | 183 | 188 | 193 | 198 | 203 | 208 |

## 1. Prepare your fabric

Wash, dry, and press your fabric. If you are cutting on the fold, fold the fabric in half lengthwise, making sure the folded edge is on-grain. If you are cutting a single layer, lay the fabric out on a large surface, checking that the fabric's grain is straight.

The cutting layouts shown here are a suggestion, and other cutting layouts that make more efficient use of your fabric may be possible. Using a single layer layout increases efficiency significantly. Take your time laying out the pieces, and follow the cutting instructions carefully.

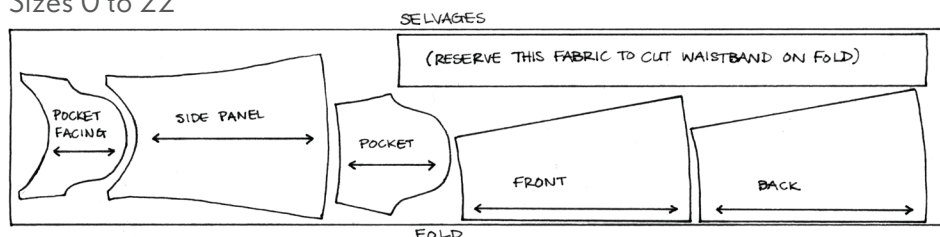
## View A Cutting

Cut out the following on your folded woven fabric, transferring any notches:

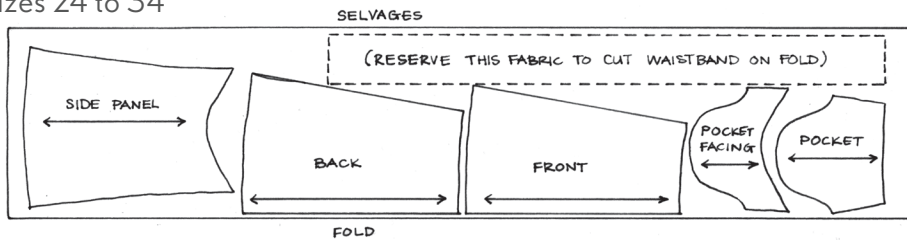
- 1 Skirt Front on fold
- 1 Skirt Back on fold
- 2 Side Panels
- 2 Pocket Facings
- 2 Pockets

## 45" (115 cm)-wide Fabric, View A

Sizes 0 to 22

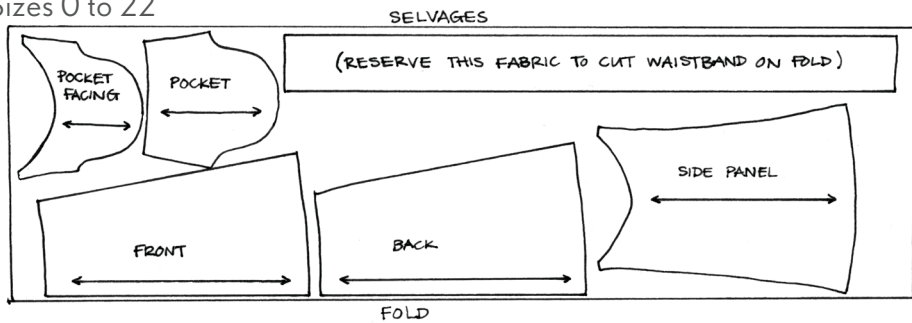


Sizes 24 to 34

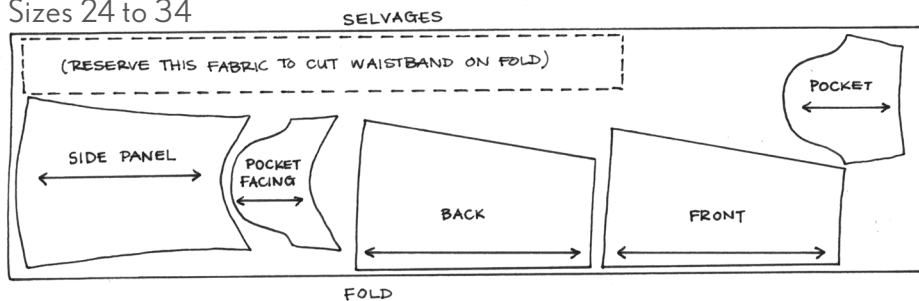


54" (137 cm)-wide Fabric, View A

Sizes 0 to 22



Sizes 24 to 34

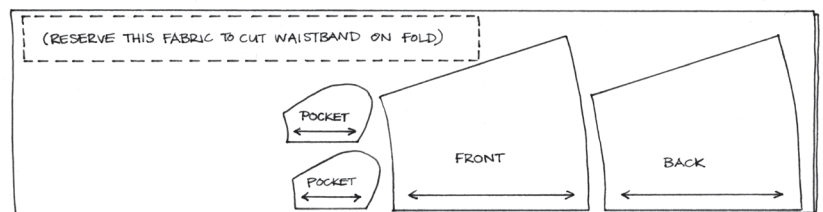


## View B Cutting

Cut out the following on your folded woven fabric, transferring any notches:

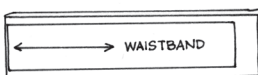
- 2 Skirts on fold (one will be Skirt Front, the other will be Skirt Back)
- 4 Pockets

**54" (137 cm)-wide Fabric. View B. All Sizes**



## Both Views (A and B) Waistband Cutting

From the reserved fabric, separate a single layer of fabric and fold so you can place your waistband on the fold. Cut 1 Waistband, then transfer markings.



fold the reserved fabric in half to cut the waistband on fold.

FABRIC KEY

RIGHT SIDE



WRONG SIDE



## 2. Mark right and wrong sides if working with solid color fabric

When working with solid rayon, silk, and tencel, it is often difficult to distinguish between the right and wrong sides of the fabric. Save yourself some frustration and seam-ripping by marking the right side of each fabric piece with a small piece of masking tape. (If you feel comfortable using chalk or a disappearing marker, that works too.)



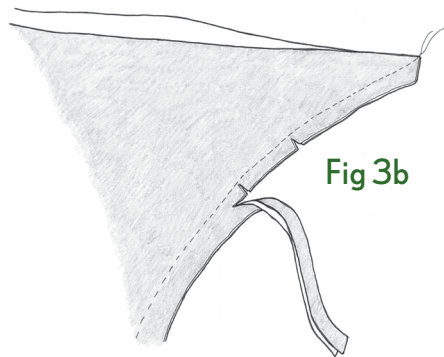


## VIEW A

(for View B, skip ahead to page 12)

### 3. Sew Pocket Facings to Side Panels

- Place one Pocket Facing on top of its corresponding Side Panel with right sides facing, matching notches. Pin along the curved edge and sew. **Fig 3a**
- Trim the seam allowance to 1/4" (6 mm) and clip along the curve. **Fig 3b**

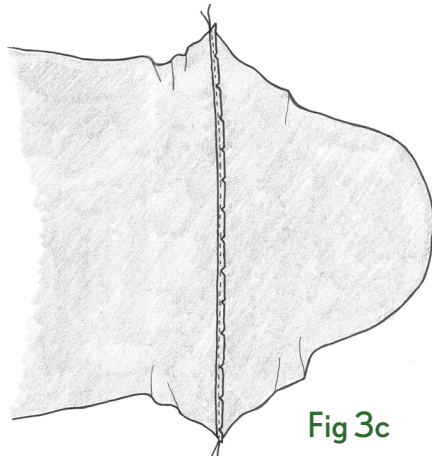


**Fig 3b**

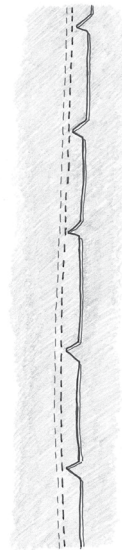


**Fig 3a**

- Press the seam allowance toward the Pocket Facing, (**Fig 3c**) then understitch the seam allowance to the Pocket Facing. (**Fig 3d**) (Stitch a scant 1/8" (3 mm) from the seam sewn in step 3a. This helps keep the Pocket Facing from popping out of the pocket when you're wearing the skirt.)



**Fig 3c**

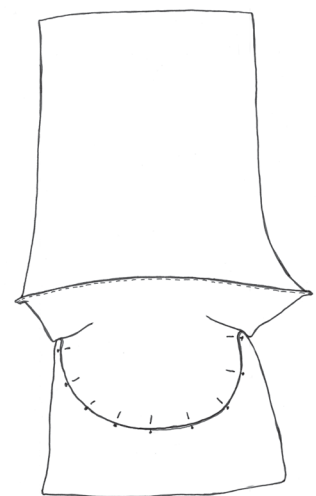


**Fig 3d**

- With the help of a pressing ham, fold the Pocket Facing to the wrong side of the Side Panel and press along the curve.
- Repeat steps 3a-3d for other Pocket Facing/Side Panel pair.

### 4. Sew Pockets to Pocket Facings using French seams

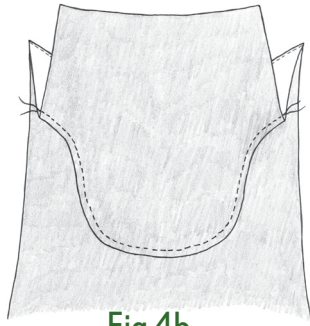
- Match the **wrong side** of the curved bottom edge of the Pocket Facing to the **wrong side** of the curved bottom of the Pocket, using the notches as a guide. Pin and sew with a 1/4" (6 mm) seam allowance. Carefully trim and notch the curved seam allowance so it will turn neatly. **Fig 4a**



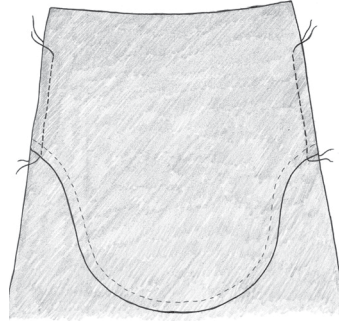
**Fig 4a**



- b. Press the seam allowance open, using a pressing ham or small rolled towel to support the pocket. Pressing the seam allowance open helps the next portion of the French seam process turn much more neatly. Bring the Pocket piece up, **right sides facing**, toward the curved edge of the Pocket Facing/Side Panel. Press along the seam sewn in step 4a.
- c. Enclose the raw edges of the seam by sewing  $3/8"$  (1 cm) from the folded, curved bottom edge of the Pocket, forming a French seam. **Fig 4b**



**Fig 4b**

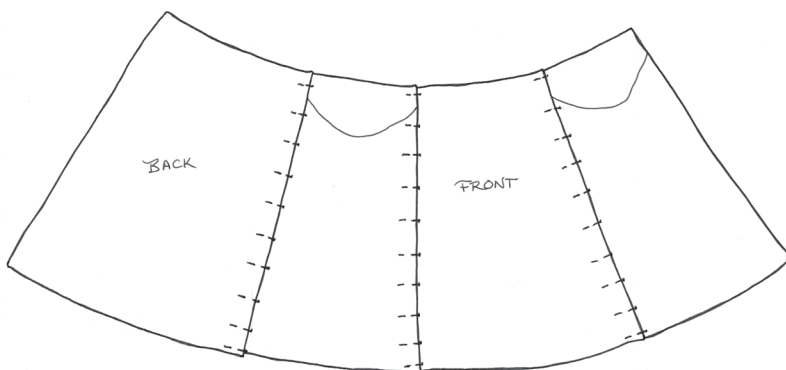


**Fig 4c**

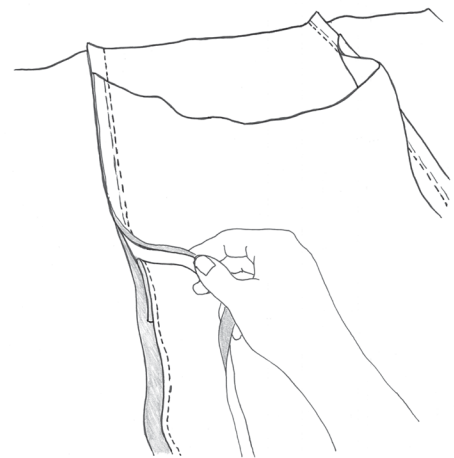
- d. Using the notches as guides, aligning the bottom of the Pocket to the lower notch, pin your Pocket piece to the Pocket Facing/Side Panel along the side edges. Increase your stitch length to 5.0 and baste all three layers together using a  $1/2"$  (1.3 cm) seam allowance. **Fig 4c**
- e. This assembly is now referred to as a Side Panel. Repeat steps 4a-d to attach the remaining Pocket to the other Pocket Facing/Side Panel.

## 5. Sew Fronts and Backs to Side Panels with flat-felled seams

- a. Lay out the four skirt pieces with **right sides up**: left to right - Skirt Back, Side Panel, Skirt Front, Side Panel. Pin together each long edge, matching notches, with the **wrong sides of the fabric** facing as shown: **Fig 5a**
- b. Sew a basic seam using a  $5/8"$  (1.6 cm) seam allowance. You will have sewn three long seams. The seam allowances will be visible from the right side of the fabric.



**Fig 5a**



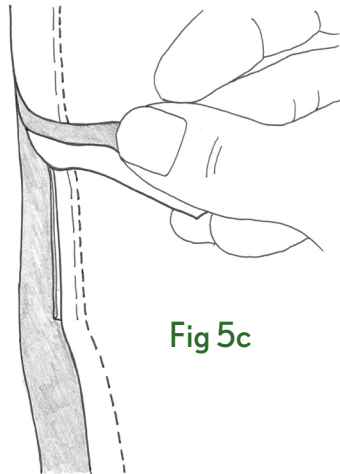
**Fig 5b**

- c. Press the seam open.

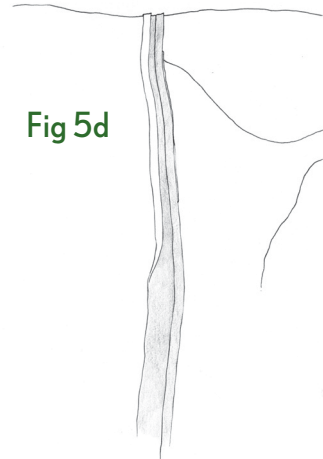




- d. Grade the seam allowances. Trim back the seam allowance closest to the Side Panels to 1/4" (6 mm). **Fig 5b** As you trim, you will be removing one layer of fabric up to the Pocket piece, at which time you will start trimming back the Pocket seam allowance as well. The other seam allowance layer (closest to the Back or Front) remains at 5/8" (1.6 cm). Trim slowly and mindfully here - you don't want to accidentally trim into the skirt fabric or the untouched, 5/8" (1.6 cm) seam allowance layer. It helps to use duckbill applique scissors. The untouched allowance will be used in the following steps to enclose the raw edges of the seam. **Fig 5c**

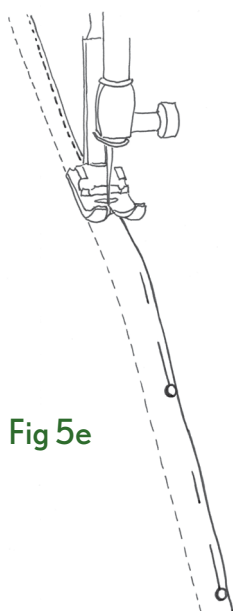


**Fig 5c**

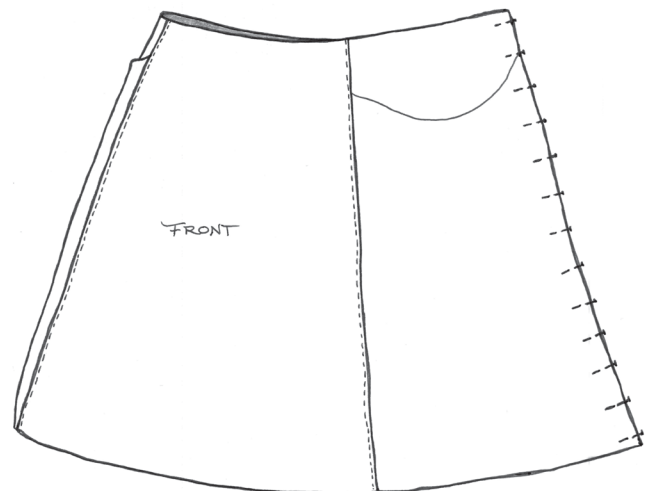


**Fig 5d**

- e. Fold and press the untouched seam allowance by 1/4" (6 mm) in the same direction you are flat-felling. (The wrong sides of this seam allowance will be touching.) **Fig 5d**
- f. Press this folded-over seam allowance toward the Side Panel, covering the raw edges of both seam allowances. Make sure you insert the pins parallel to the seam with the pin heads facing the skirt hem, and use them liberally to keep the raw edges from shifting about while you sew. You can also use (optional) Wonder Tape instead of pins to keep this folded seam allowance in place while you sew.
- g. Edgestitch the folded-under edge in place along the entire length of each seam. To edgestitch, simply sew as close to the edge as possible - a scant 1/8" (3 mm). **Fig 5e** Using an edgestitch foot really helps keep this line of stitching even, but if you don't have one, just take it slowly and carefully.
- h. You should now have three long, flat-felled seams. Repeat this process to sew the final flat-felled seam, bringing the unfinished edges of the Skirt Back and Side Panel together, **wrong sides facing**. **Fig 5f**



**Fig 5e**

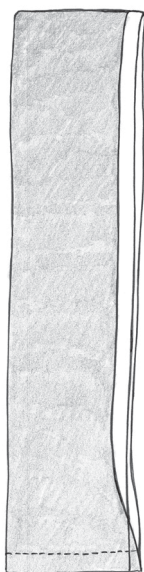


**Fig 5f**

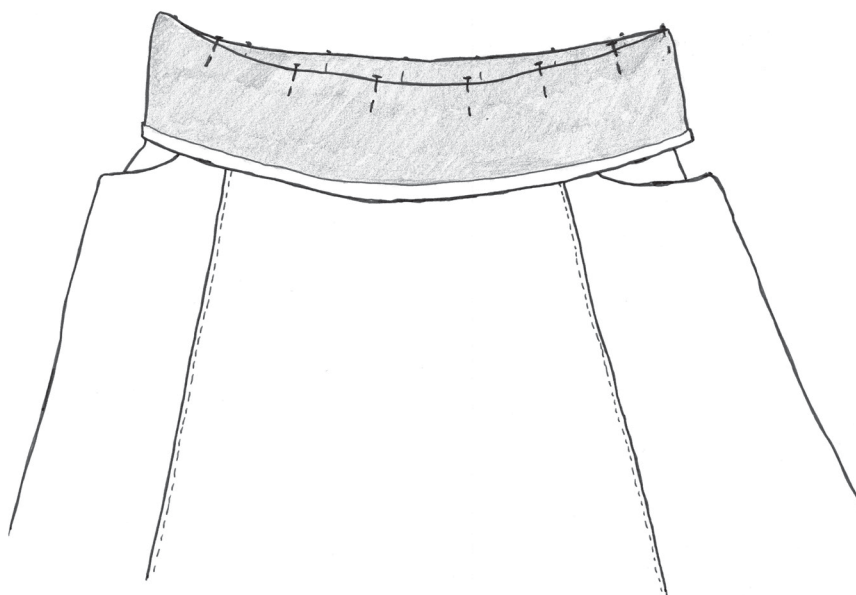


## 6. Sew the Waistband to the Skirt

- a. Prepare the Waistband by folding it in half, **right sides together**, so that the short edges touch. Pin and sew along the short edge, forming a loop. Press this seam open. There's no need to finish it, as it will be enclosed in the waistband casing. Fold one edge of the Waistband  $1/2"$  (1.3 cm) **toward the wrong side** and press. You will now have a loop, with one long edge pressed toward the wrong side. **Fig 6a**
- b. With **right sides together**, pin the unpressed edge of the Waistband to the top of the skirt, aligning the Waistband seam with the center back notches of the skirt. (The other notches on the waistband line up with the panel seams.) Sew with a  $1/2"$  (1.3 cm) seam allowance. **Fig 6b**



**Fig 6a**

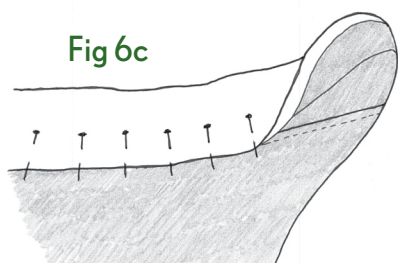


**Fig 6b**

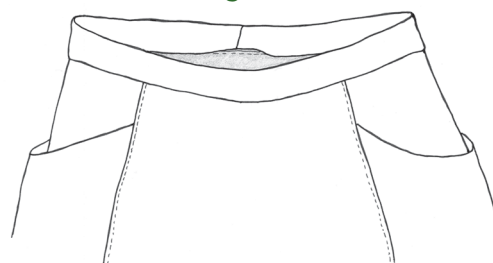
- c. Trim back this seam allowance to  $1/4"$  (6 mm) and press the allowance toward the Waistband.
- d. Fold the Waistband down so that the pressed, folded edge is just beyond the seam that attaches the Waistband to the skirt, and pin in place. Make sure your pins are perpendicular to the seam and that the pin heads are facing the waist opening. Pin liberally around the entire waist, or use Wonder Tape to secure the folded edge in place.

**Fig 6c**

- e. Turn the skirt inside out, then begin stitching in the ditch from the right side of the Waistband, beginning  $1.5"$  (3.8 cm) from the center back of the skirt. You will just be catching the folded-under Waistband edge in your stitching. I recommend not removing the pins as you sew, to keep your fabric from shifting. As long as you slow down, you won't break any needles. Continue [stitching in the ditch](#) until you are  $1.5"$  (3.8 cm) from the center back. Now you have a Waistband casing with an opening at the center back for inserting your elastic. **Fig 6d**



**Fig 6c**

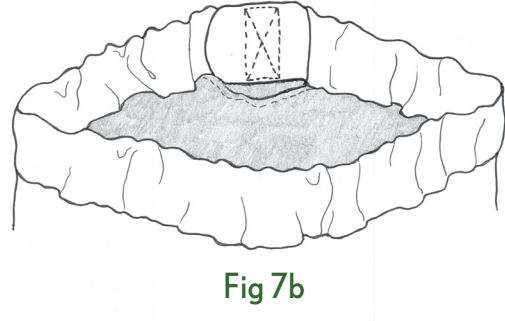
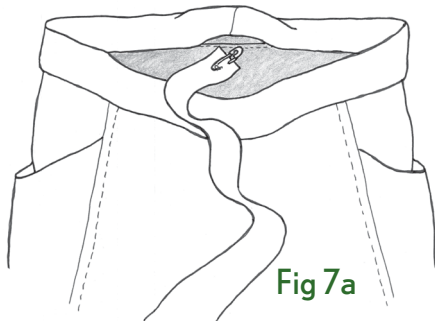


**Fig 6d**

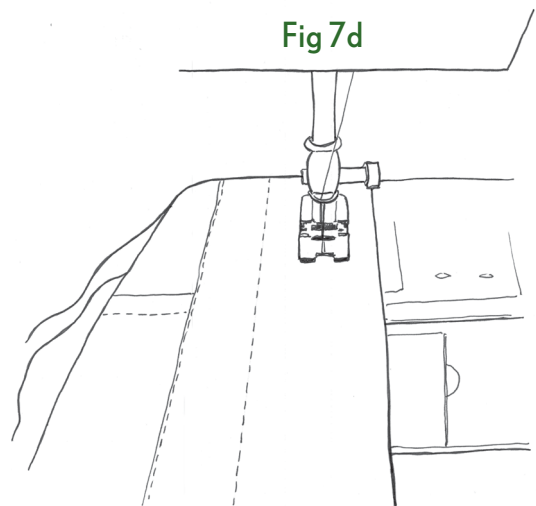
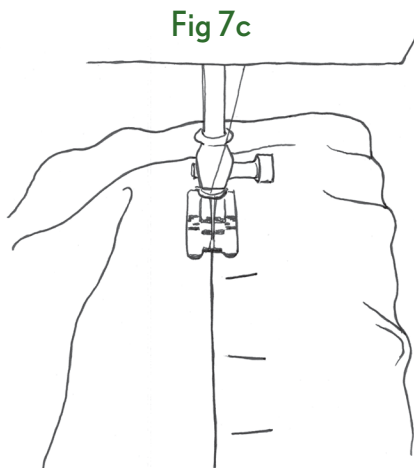


## 7. Insert the Waistband elastic and finish the Waistband

- a. Determine the length of your elastic by wrapping it around your waist. Most folks will find it most comfortable to wear the waistband centered over their belly buttons. For example, my natural waist (the smallest circumference) which is about 2" (5 cm) above my belly button, measures 29" (73.6 cm). At my belly button, I measure about an inch (2.5 cm) larger. I cut my elastic to measure 31" (78.7 cm), which accounts for a 1" (2.5 cm) overlap in order to sew the elastic together. So, the finished circumference of my waistband will be 29" (73.6 cm), to be worn at a spot on my waist with a 30" (76.2 cm) circumference. My preference for 1" (2.5 cm) of negative ease in my elastic might not be yours, but I find that it's a good place to start. You can always cinch it up from there, but increase the circumference by too much and you'll find yourself having to hike up your skirt! The Dritz Soft Waistband Elastic is very forgiving and not at all stiff, so it should accommodate any future weight shift comfortably.
- b. Attach one short end of your length of elastic to a large safety pin and pass it through the opening in the Waistband casing. Use the safety pin to guide your elastic through the casing, being careful not to twist or fold the elastic. **Fig 7a**



- c. Check again to make sure the elastic isn't twisted, then overlap the ends by 1" (2.5 cm) and stitch together securely; one option is to stitch a rectangle with an "X" inside. **Fig 7b**
- d. Tuck the elastic into the casing and pin closed as in step 8e. With the **right side** of the skirt facing up, stitch in the ditch, being careful not to catch the elastic in your stitching. **Fig 7c**
- e. Increase your stitch length to 3.5 mm. Beginning at the center back of the Waistband and 5/8" (1.6 cm) from the bottom seam of the Waistband, stitch around the entire Waistband while stretching taut the elastic. (Stretching the elastic while you sew will make your straight stitches into a stretch stitch so your thread won't break when you pull on your skirt.) Make another line of stitches 5/8" (1.6 cm) from the top of the Waistband, forming two lines of parallel stitches. **Fig 7d**



## 8. Hem your skirt

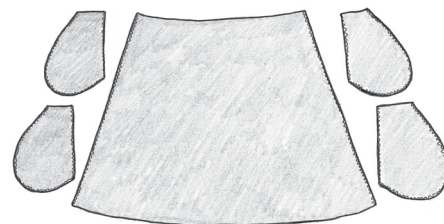
- Press the raw edge of the skirt 1/2" (1.3 cm) toward the wrong side. Press once more toward the wrong side by 1" (2.5 cm).
- Pin in place and edgestitch around the entire hem.

## VIEW B

(for View A, go back to page 7)

## 9. Finish the edges of the Skirts and Pockets.

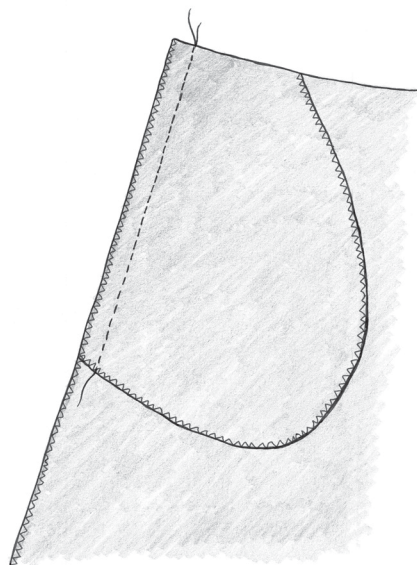
- Using the finishing method of your choice - serger/overlocker or zigzag stitch - stitch around the curved edge and longer straight edge of each Pocket piece. The shorter, top edge of the Pockets will be hidden in the waistband seam, so no need to finish that edge.
- Finish the sides of both Front and Back Skirt pieces. **Fig 9a**



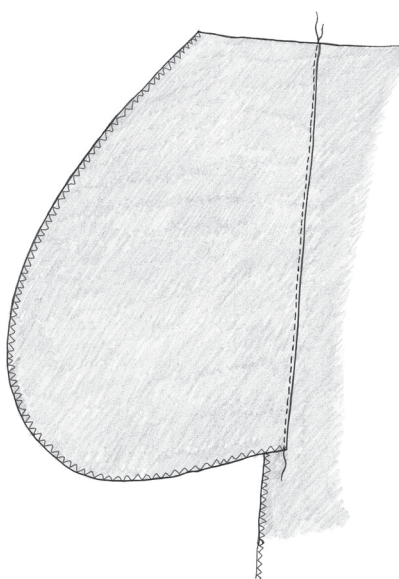
**Fig 9a**

## 10. Sew the inserted Pockets

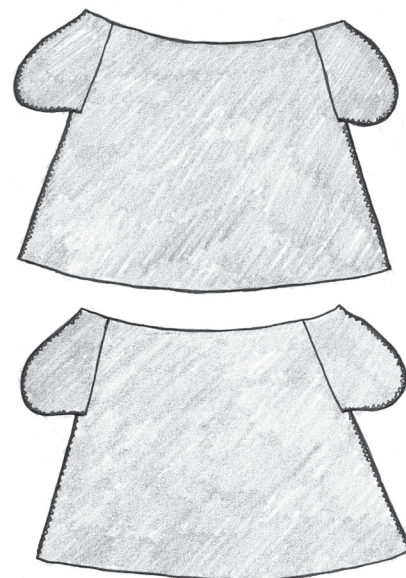
- With **right sides together** and notches matched, align one View B Pocket to the Front Skirt at the side seam. Pin and stitch from the top (waist) edge to the edge of the Pocket. **Fig 10a**
- Press the seam allowances and Pocket away from the Skirt, and understitch along the seam just sewn. (To understitch, sew a scant 1/8" (3 mm) from the seam on the Pocket fabric, catching the seam allowances in your stitching.) **Fig 10b**
- Repeat steps 2a. - 2b. to attach the remaining View B Pockets to the Front and Back Skirts. You will now have two skirt pieces, each with a set of "elephant ear" pockets. **Fig 10c**



**Fig 10a**



**Fig 10b**



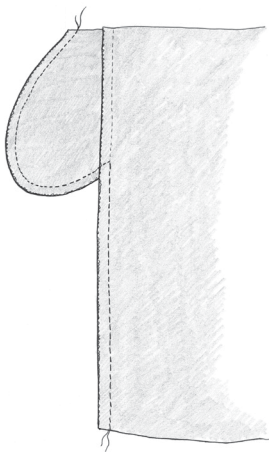
**Fig 10c**



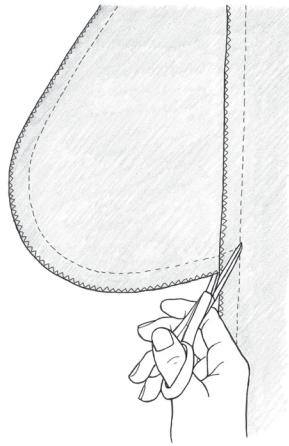


## 11. Sew the side seams of the Skirt

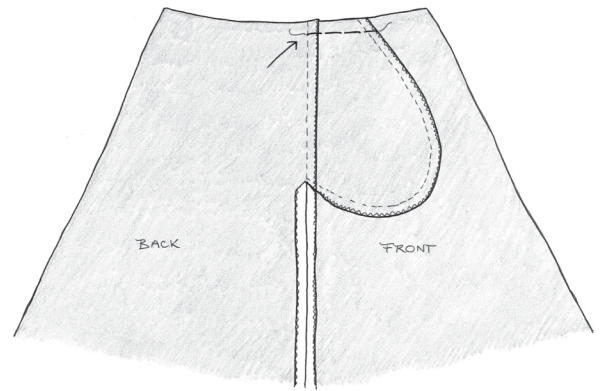
- With **right sides facing** and Pocket pieces extended, lay the Front Skirt on the Back Skirt and align the Pocket pieces and side seams. Pin.
- Sew from the top, short edge of the pocket, around the curve, to just past the seam that attaches the pocket to the skirt. With your needle planted in the fabric, lift up your presser foot, pivot, and continue sewing at  $5/8"$  (1.6 cm) down the side seam to the edge. **Fig 11a**
- Clip the Back Skirt seam allowance at the bottom of the pocket to the acute angle formed by your stitching, a scant  $1/2"$  (1.3 cm) clip. **Fig 11b**
- Press the pocket, seam allowances, and Front Skirt away from the Back Skirt. Below the pocket, press the seam allowances open. Using your machine's longest stitch length, baste the pocket to the Front Skirt at the waist using a  $1/2"$  (1.3 cm) seam allowance. **Fig 11c**
- Repeat step 3 to sew the remaining side seam.



**Fig 11a**



**Fig 11b**



**Fig 11c**

**12.** Follow Steps 6-8 of the View A instructions to complete your Gypsum Skirt.



**Congratulations!**

**You have finished your Gypsum Skirt.**



We'd love to see a picture on social media. To share, use the hashtags #SewLiberated and #GypsumSkirt

We have many other patterns available at [SewLiberated.com](https://sewliberated.com) and you can learn to make your Gypsum Skirt part of a capsule wardrobe in [Meg's Mindful Wardrobe online course](#).