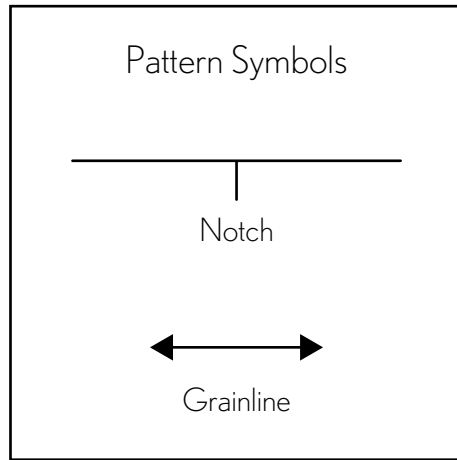


Place this edge on fold

6 cm Test Square



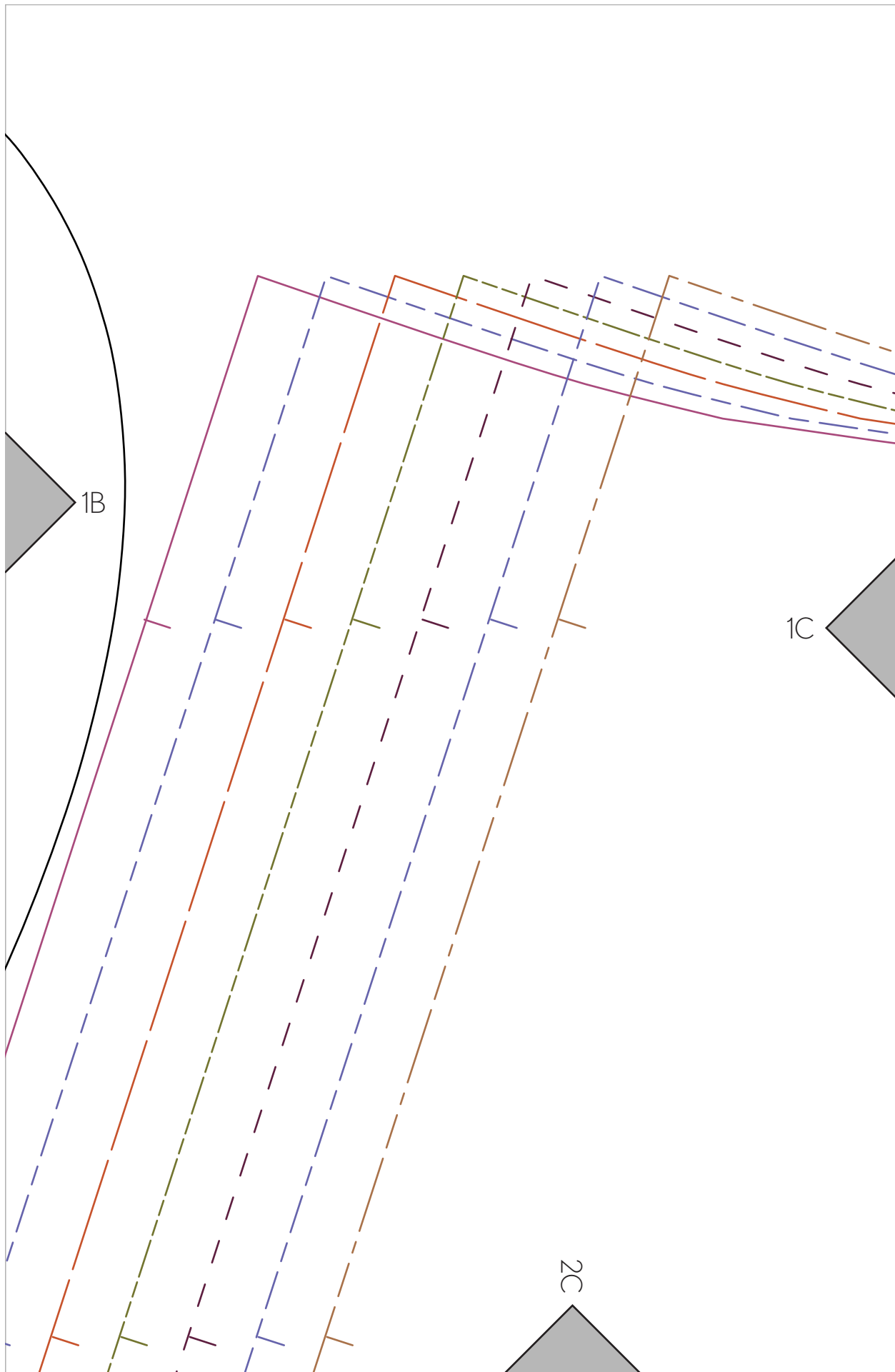
1A

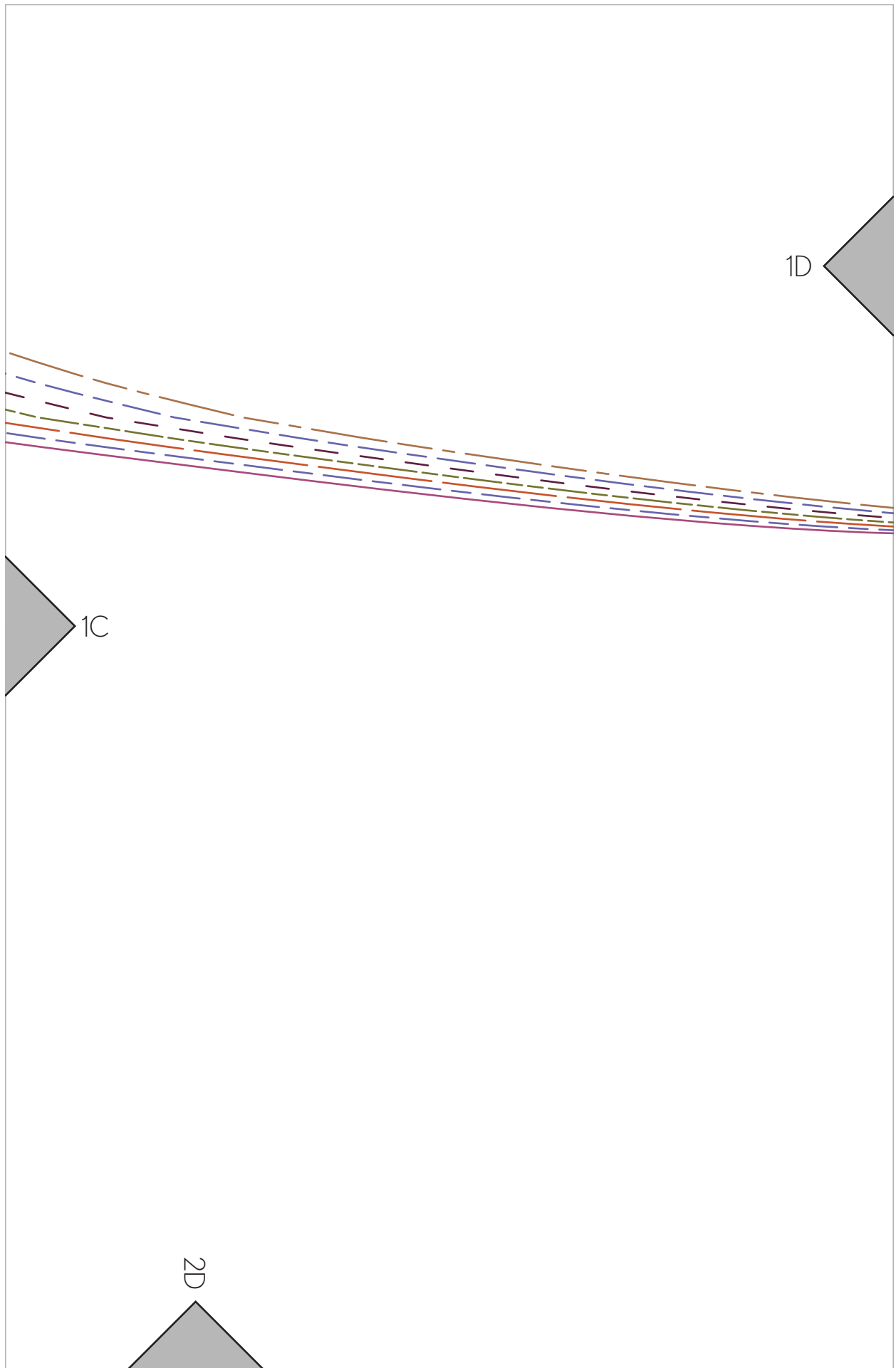
3 inch Test Square

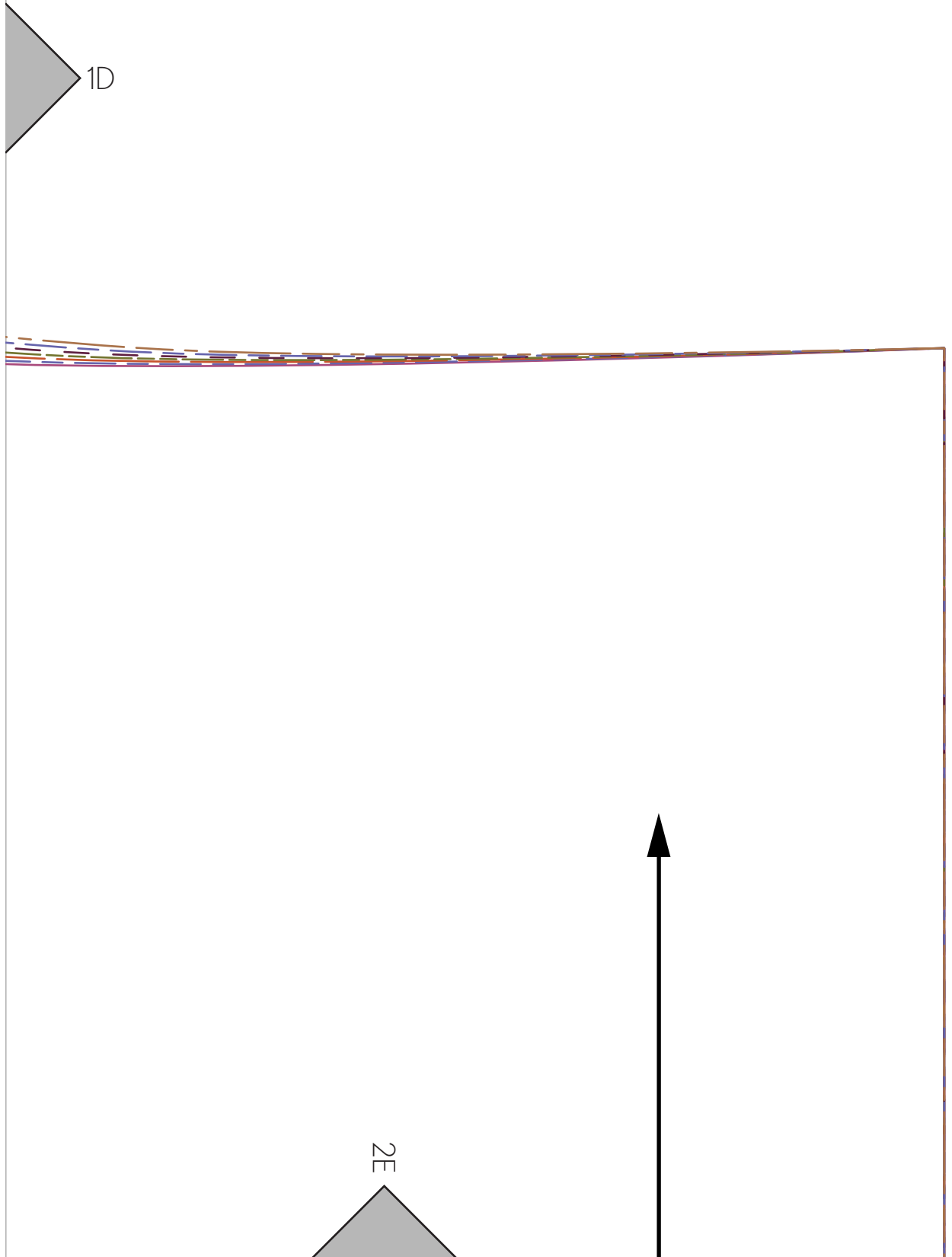


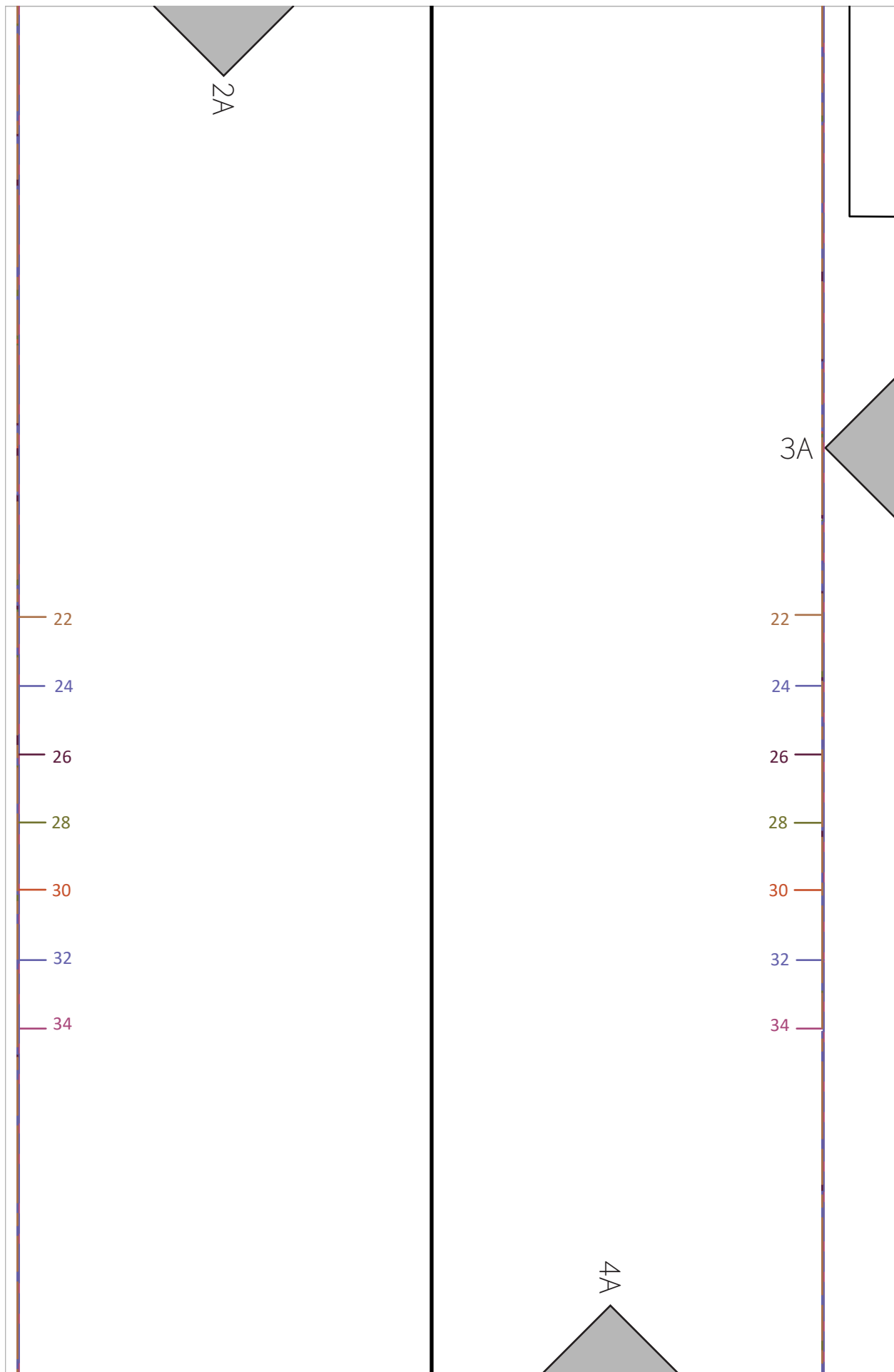
2A

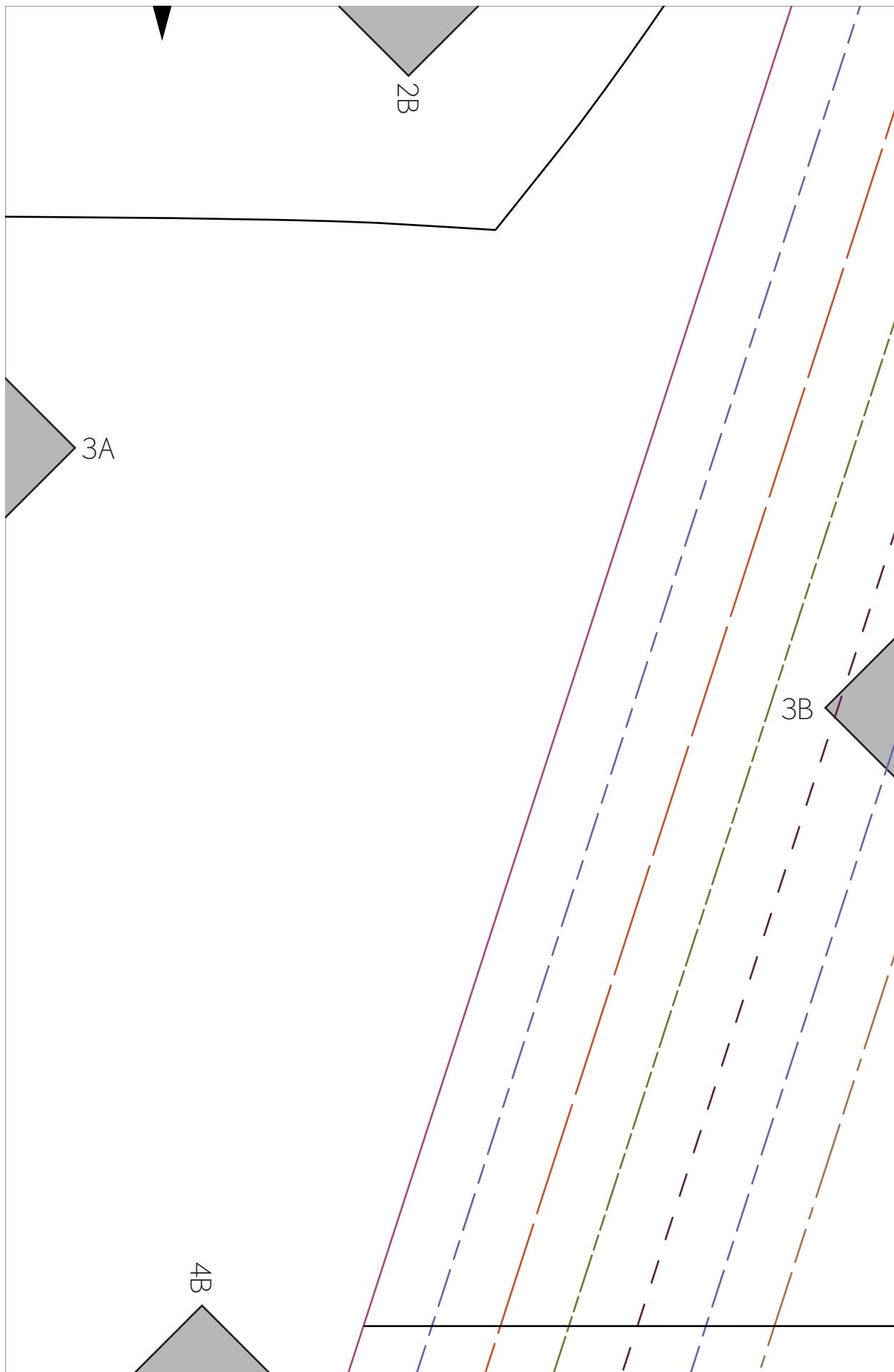


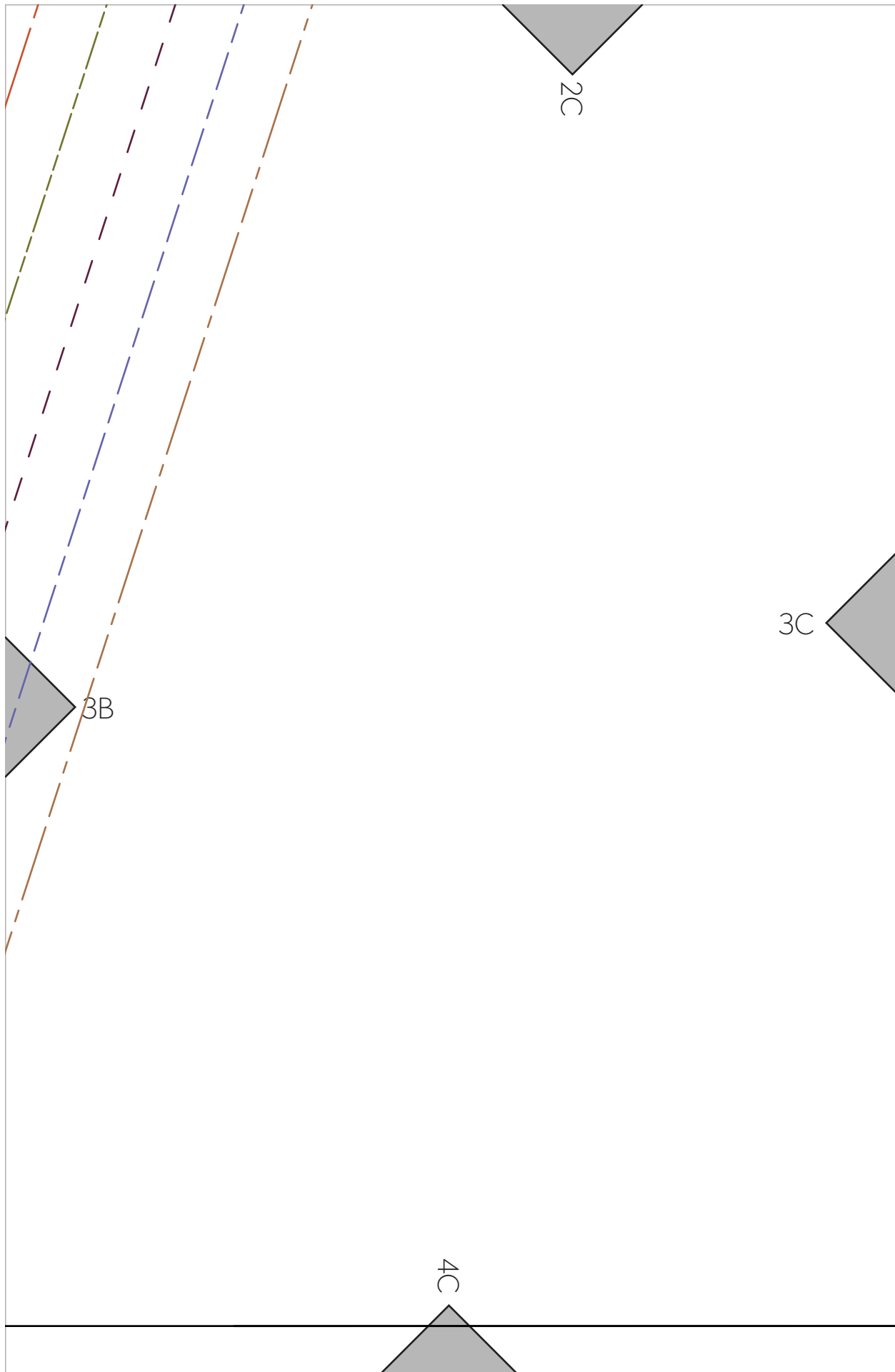












2D

Skirt - View B

Cut 2 on Fold from Main Fabric

Sew Liberated - Gypsum Skirt

Sizes 22 - 34

Seam allowances are 5/8" (1.6 cm) unless otherwise stated,
and are included in the patterns.

3C

3D

4D

Lengthen or Shorten Here

