

LA ROBE COVE



les perlines

/ NIVEAU DE COUTURE: INTERMÉDIAIRE

/ JUSQU'À UNE POITRINE DE 140CM (55'') ET HANCHES DE 153CM (60'')

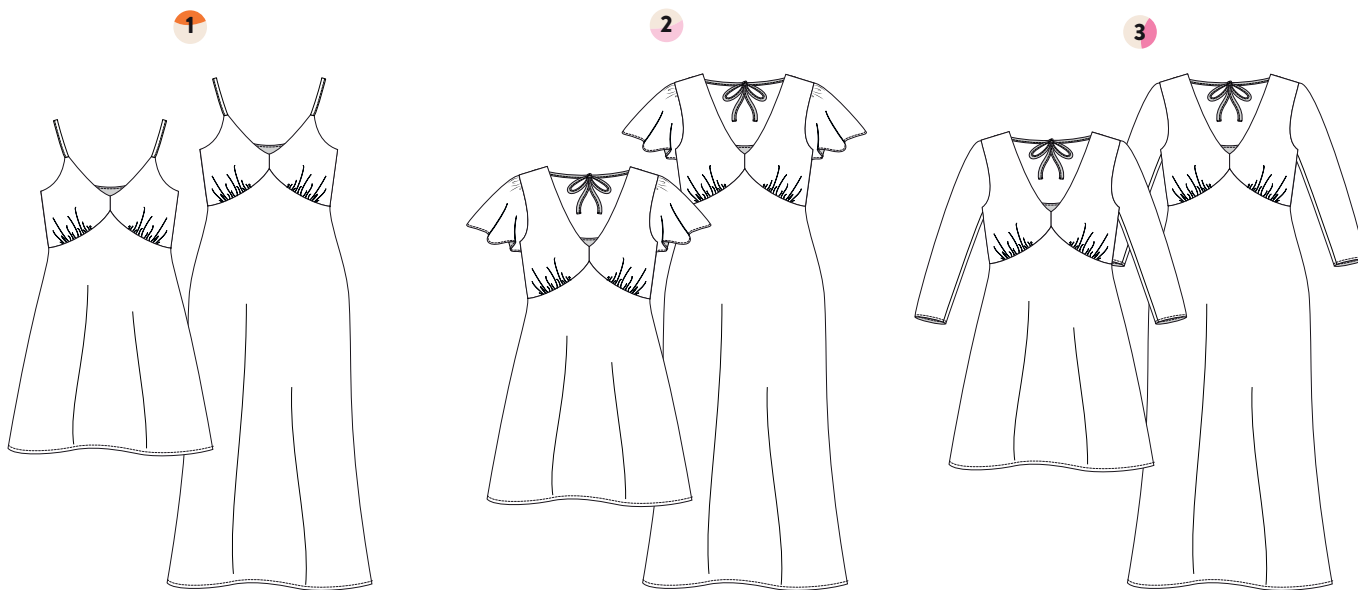
/ LESPERLINES.COM

/ #COVESLIPDRESS

/ POUR USAGE PERSONNEL SEULEMENT

/ CRÉE À MONTRÉAL, CANADA

métrage requis



MÉTRAGE REQUIS

VERSION 1 - ROBE COURTE

	AA	A	B	C	D	E	F	G	H	I	J	K	L	M	N	O
152 cm / 60"	1.5 m 1.6 yds	1.5 m 1.6 yds	1.5 m 1.6 yds	1.5 m 1.6 yds	1.5 m 1.6 yds	1.5 m 1.6 yds	1.8 m 2 yds	1.8 m 2 yds	1.8 m 2 yds	1.8 m 2 yds	1.8 m 2 yds	2 m 2.2 yds	2 m 2.2 yds	2 m 2.2 yds	2 m 2.2 yds	2 m 2.2 yds
114 cm / 45"	2 m 2.2 yds	2 m 2.2 yds	2 m 2.2 yds	2 m 2.2 yds	2 m 2.2 yds	2 m 2.2 yds	2.3 m 2.5 yds	2.3 m 2.5 yds	2.3 m 2.5 yds	2.3 m 2.5 yds	2.3 m 2.5 yds	2.8 m 3 yds	2.8 m 3 yds	2.8 m 3 yds	2.8 m 3 yds	2.8 m 3 yds

VERSION 1 - ROBE LONGUE

	AA	A	B	C	D	E	F	G	H	I	J	K	L	M	N	O
152 cm / 60"	2 m 2.2 yds	2 m 2.2 yds	2 m 2.2 yds	2 m 2.2 yds	2 m 2.2 yds	2 m 2.2 yds	2.9 m 3.2 yds	2.9 m 3.2 yds	2.9 m 3.2 yds	2.9 m 3.2 yds	2.9 m 3.2 yds	2.9 m 3.2 yds	2.9 m 3.2 yds	2.9 m 3.2 yds	2.9 m 3.2 yds	2.9 m 3.2 yds
114 cm / 45"	2.5 m 2.7 yds	2.5 m 2.7 yds	2.5 m 2.7 yds	2.5 m 2.7 yds	2.5 m 2.7 yds	2.5 m 2.7 yds	3 m 3.3 yds	3 m 3.3 yds	3 m 3.3 yds	3 m 3.3 yds	3 m 3.3 yds	3.5 m 3.8 yds	3.5 m 3.8 yds	3.5 m 3.8 yds	3.5 m 3.8 yds	3.5 m 3.8 yds

VERSION 2 - ROBE COURTE

	AA	A	B	C	D	E	F	G	H	I	J	K	L	M	N	O
152 cm / 60"	2 m 2.2 yds	2 m 2.2 yds	2 m 2.2 yds	2 m 2.2 yds	2 m 2.2 yds	2 m 2.2 yds	2.5 m 2.7 yds	2.5 m 2.7 yds	2.5 m 2.7 yds	2.5 m 2.7 yds	2.5 m 2.7 yds	3 m 3.3 yds	3 m 3.3 yds	3 m 3.3 yds	3 m 3.3 yds	3 m 3.3 yds
114 cm / 45"	2.5 m 2.7 yds	2.5 m 2.7 yds	2.5 m 2.7 yds	2.5 m 2.7 yds	2.5 m 2.7 yds	2.5 m 2.7 yds	3.1 m 3.4 yds	3.1 m 3.4 yds	3.1 m 3.4 yds	3.1 m 3.4 yds	3.1 m 3.4 yds	3.7 m 4 yds	3.7 m 4 yds	3.7 m 4 yds	3.7 m 4 yds	3.7 m 4 yds

VERSION 2 - ROBE LONGUE

	AA	A	B	C	D	E	F	G	H	I	J	K	L	M	N	O
152 cm / 60"	2.5 m 2.7 yds	2.5 m 2.7 yds	2.5 m 2.7 yds	2.5 m 2.7 yds	2.5 m 2.7 yds	2.5 m 2.7 yds	3.1 m 3.4 yds	3.1 m 3.4 yds	3.1 m 3.4 yds	3.1 m 3.4 yds	3.1 m 3.4 yds	3.4 m 3.7 yds	3.4 m 3.7 yds	3.4 m 3.7 yds	3.4 m 3.7 yds	3.4 m 3.7 yds
114 cm / 45"	2.9 m 3.2 yds	2.9 m 3.2 yds	2.9 m 3.2 yds	2.9 m 3.2 yds	2.9 m 3.2 yds	2.9 m 3.2 yds	3.8 m 4.1 yds	3.8 m 4.1 yds	3.8 m 4.1 yds	3.8 m 4.1 yds	3.8 m 4.1 yds	4.4 m 4.8 yds	4.4 m 4.8 yds	4.4 m 4.8 yds	4.4 m 4.8 yds	4.4 m 4.8 yds

VERSION 3 - ROBE COURTE

	AA	A	B	C	D	E	F	G	H	I	J	K	L	M	N	O
152 cm / 60"	2.3 m 2.5 yds	2.3 m 2.5 yds	2.3 m 2.5 yds	2.3 m 2.5 yds	2.3 m 2.5 yds	2.3 m 2.5 yds	2.6 m 2.8 yds	2.6 m 2.8 yds	2.6 m 2.8 yds	2.6 m 2.8 yds	2.6 m 2.8 yds	3 m 3.3 yds	3 m 3.3 yds	3 m 3.3 yds	3 m 3.3 yds	3 m 3.3 yds
114 cm / 45"	2.8 m 3 yds	2.8 m 3 yds	2.8 m 3 yds	2.8 m 3 yds	2.8 m 3 yds	2.8 m 3 yds	3.4 m 3.7 yds	3.4 m 3.7 yds	3.4 m 3.7 yds	3.4 m 3.7 yds	3.4 m 3.7 yds	4.1 m 4.5 yds	4.1 m 4.5 yds	4.1 m 4.5 yds	4.1 m 4.5 yds	4.1 m 4.5 yds

VERSION 3 - ROBE LONGUE

	AA	A	B	C	D	E	F	G	H	I	J	K	L	M	N	O
152 cm / 60"	2.7 m 2.9 yds	2.7 m 2.9 yds	2.7 m 2.9 yds	2.7 m 2.9 yds	2.7 m 2.9 yds	2.7 m 2.9 yds	3.3 m 3.6 yds	3.3 m 3.6 yds	3.3 m 3.6 yds	3.3 m 3.6 yds	3.3 m 3.6 yds	3.5 m 3.8 yds	3.5 m 3.8 yds	3.5 m 3.8 yds	3.5 m 3.8 yds	3.5 m 3.8 yds
114 cm / 45"	3.2 m 3.5 yds	3.2 m 3.5 yds	3.2 m 3.5 yds	3.2 m 3.5 yds	3.2 m 3.5 yds	3.2 m 3.5 yds	4 m 4.3 yds	4 m 4.3 yds	4 m 4.3 yds	4 m 4.3 yds	4 m 4.3 yds	4.5 m 4.9 yds	4.5 m 4.9 yds	4.5 m 4.9 yds	4.5 m 4.9 yds	4.5 m 4.9 yds

instructions pour la coupe

COMMENT LIRE LES INSTRUCTIONS DE COUPE

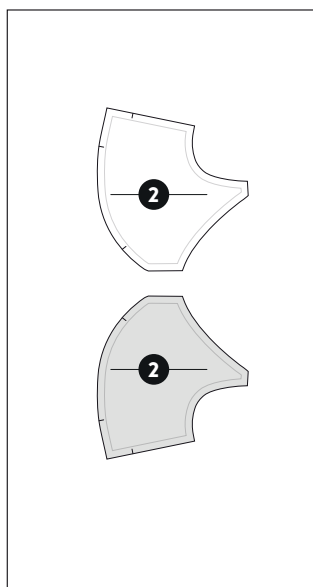
LA ROBE COVÉ

2 / HAUT DEVANT (VERSION SANS MANCHE)
/ TISSU : ✂ 2
/ DOUBLURE : ✂ 2
/ TAILLE :

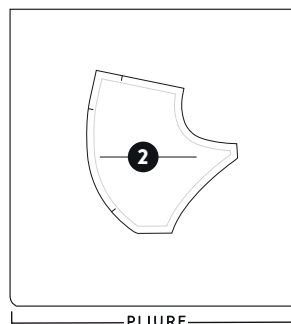
les perlines

/ TISSU : ✂ 2 La pièce patron doit être coupée 2 fois - les pièces doivent être une image miroir l'une de l'autre.

COUPE OUVERTE
LA COUPE EST FAITE AVEC LE TISSU
EN UNE SEULE ÉPAISSEUR



COUPE SUR LA PLIURE
LA COUPE EST FAITE AVEC LE TISSU PLIÉ



-  ENDROIT DE LA PIÈCE PATRON / DU TISSU
-  ENVERS DE LA PIÈCE PATRON / DU TISSU

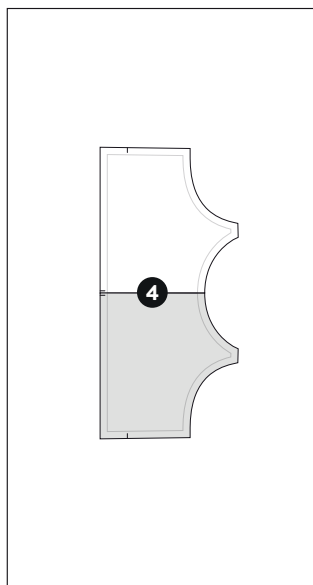
LA ROBE COVÉ

4 / HAUT DOS (VERSION SANS MANCHE)
/ TISSU : ✂ 2
/ DOUBLURE : ✂ 2
/ TAILLE :

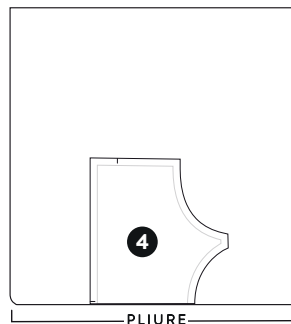
les perlines

/ TISSU : ✂ 1 SUR LA PLIURE La pièce patron doit être coupée 1 fois, sur la pliure du tissu- la pliure du tissu agit comme un axe de symétrie. Si la coupe est faite ouverte, la pièce doit être tournée manuellement afin de créer la symétrie.

COUPE OUVERTE
LA COUPE EST FAITE AVEC LE TISSU
EN UNE SEULE ÉPAISSEUR



COUPE SUR LA PLIURE
LA COUPE EST FAITE AVEC LE TISSU PLIÉ

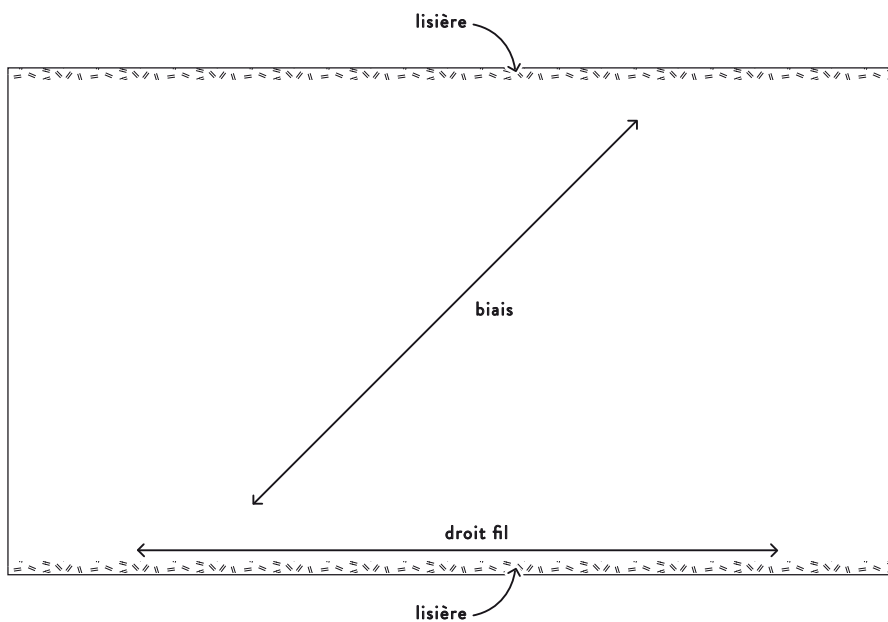


-  ENDROIT DE LA PIÈCE PATRON / DU TISSU
-  ENVERS DE LA PIÈCE PATRON / DU TISSU

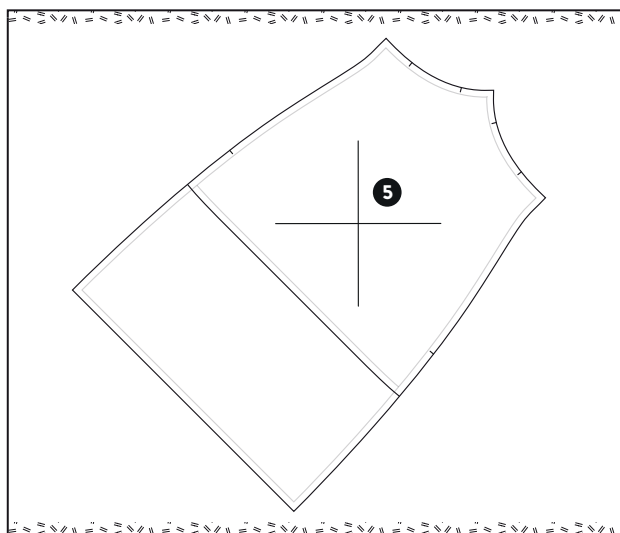
couper sur le biais

QU'EST-CE QUE LA COUPE SUR LE BIAIS?

La coupe sur le biais veut dire que le tissu est coupé sur la diagonale (sur un angle de 45°) par rapport à la lisière du tissu. Une coupe sur le biais donne aux tissés plus de fluidité et d'extensibilité.



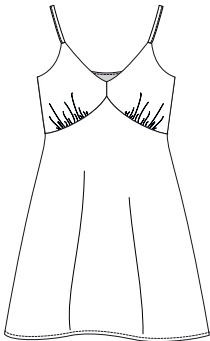
Sur les pièces patrons, le biais est indiqué par une flèche en diagonale. Ces flèches se retrouveront parallèles à la lisière du tissu lors de la coupe, et les pièces patrons seront ainsi coupées sur le biais du tissu.







plans de coupe / TAILLE E

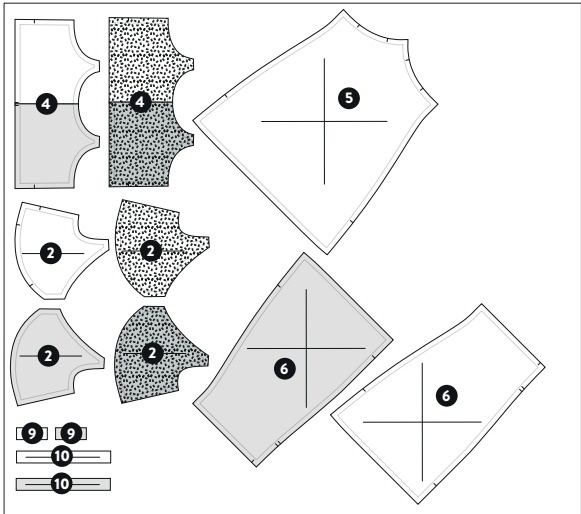
/ VERSION 1 - ROBE COURTE

COUPE OUVERTE

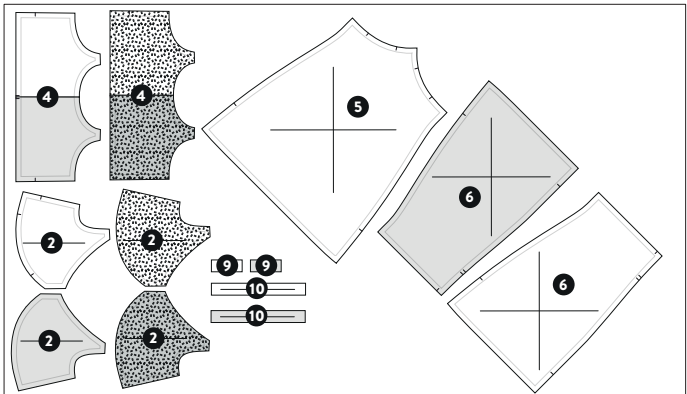


-  ENDROIT DU TISSU
-  ENVERS DU TISSU
-  ENDROIT DOUBLURE
-  ENVERS DOUBLURE

TISSU 152 CM / 60"



TISSU 114 CM / 45"







plans de coupe / TAILLE J

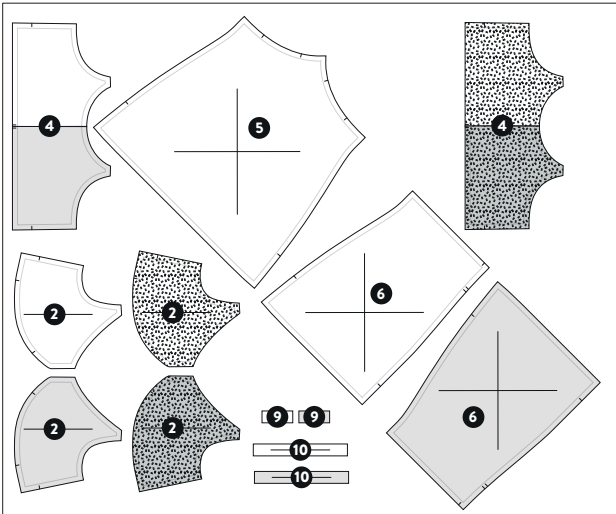
/ VERSION 1 - ROBE COURTE

COUPE OUVERTE

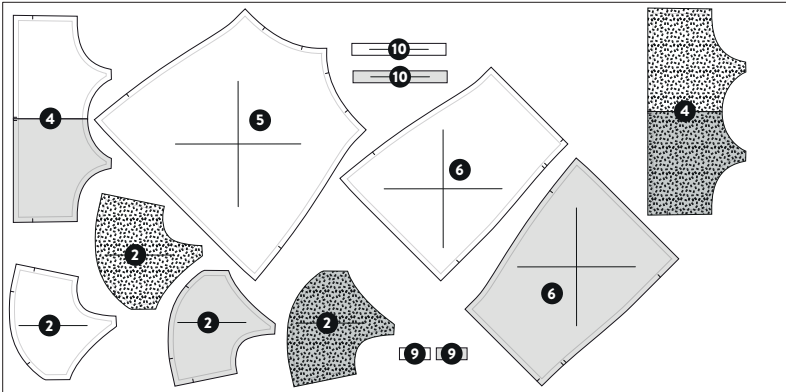


-  ENDROIT DU TISSU
-  ENVERS DU TISSU
-  ENDROIT DOUBLURE
-  ENVERS DOUBLURE

TISSU 152 CM / 60"



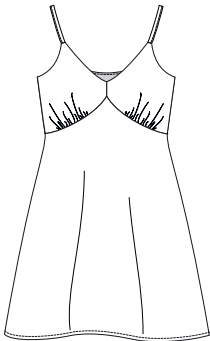
TISSU 114 CM / 45"







plans de coupe / TAILLE 0

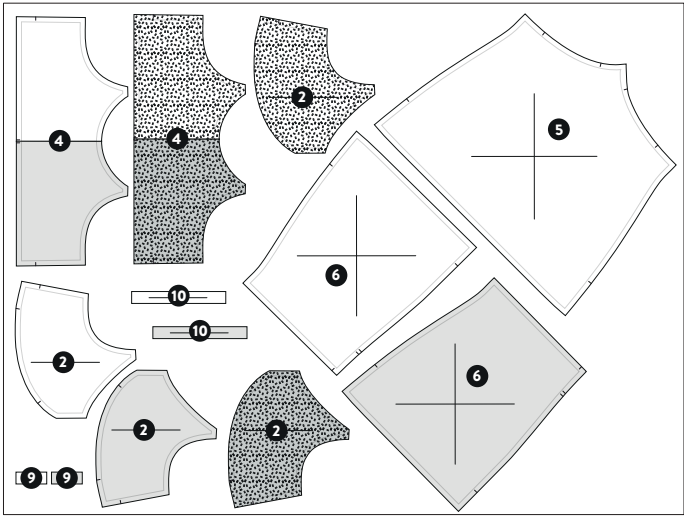
/ VERSION 1 - ROBE COURTE

COUPE OUVERTE

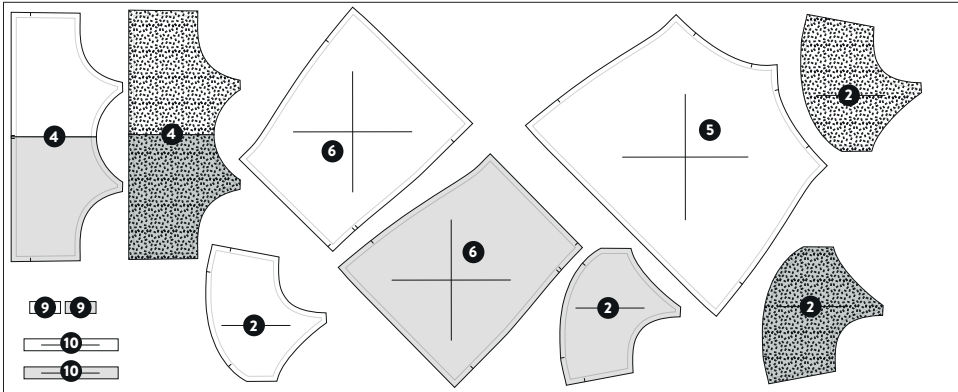


-  ENDROIT DU TISSU
-  ENVERS DU TISSU
-  ENDROIT DOUBLURE
-  ENVERS DOUBLURE

TISSU 152 CM / 60"



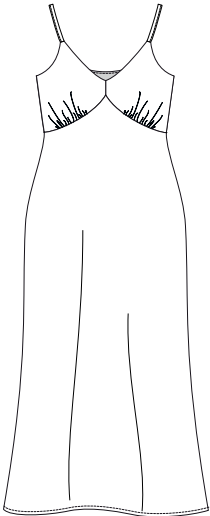
TISSU 114 CM / 45"







plans de coupe / TAILLE E

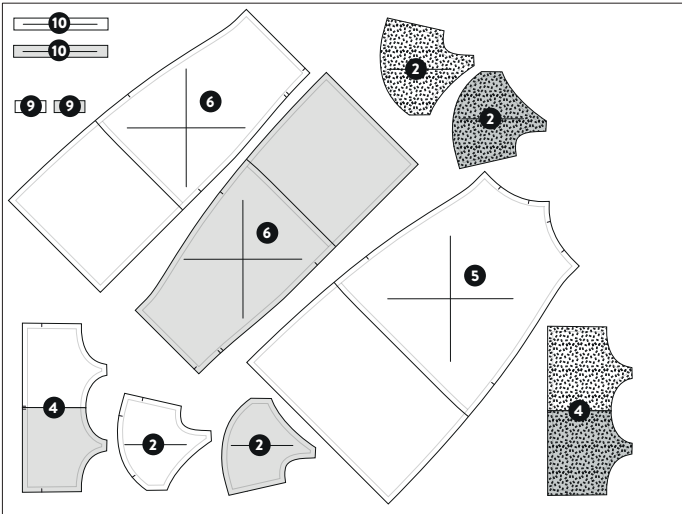
/ VERSION 1 - ROBE LONGUE

COUPE OUVERTE

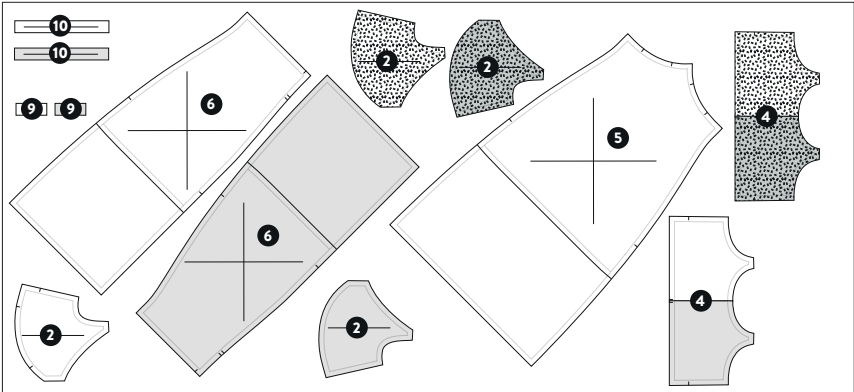


-  ENDROIT DU TISSU
-  ENVERS DU TISSU
-  ENDROIT DOUBLURE
-  ENVERS DOUBLURE

TISSU 152 CM / 60"



TISSU 114 CM / 45"

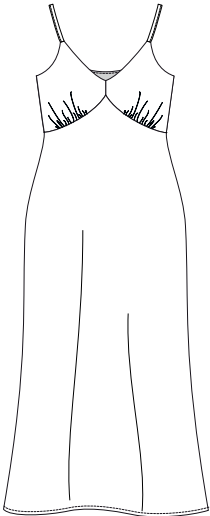






plans de coupe

/ TAILLE J

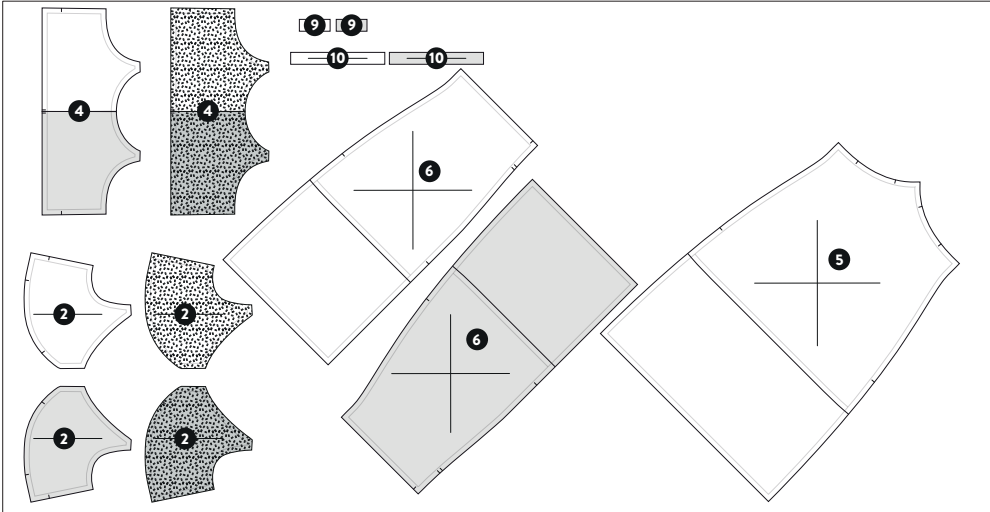
/ VERSION 1 - ROBE LONGUE

COUPE OUVERTE

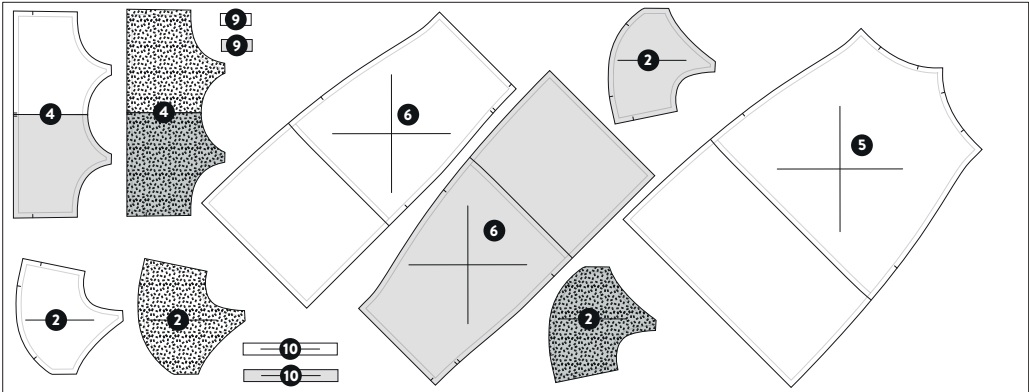


-  ENDROIT DU TISSU
-  ENVERS DU TISSU
-  ENDROIT DOUBLURE
-  ENVERS DOUBLURE

TISSU 152 CM / 60"



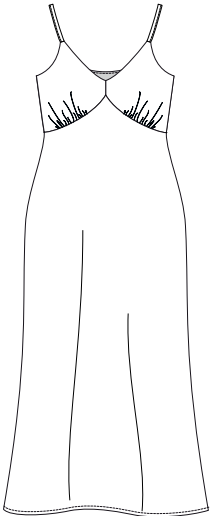
TISSU 114 CM / 45"



plans de coupe / TAILLE 0

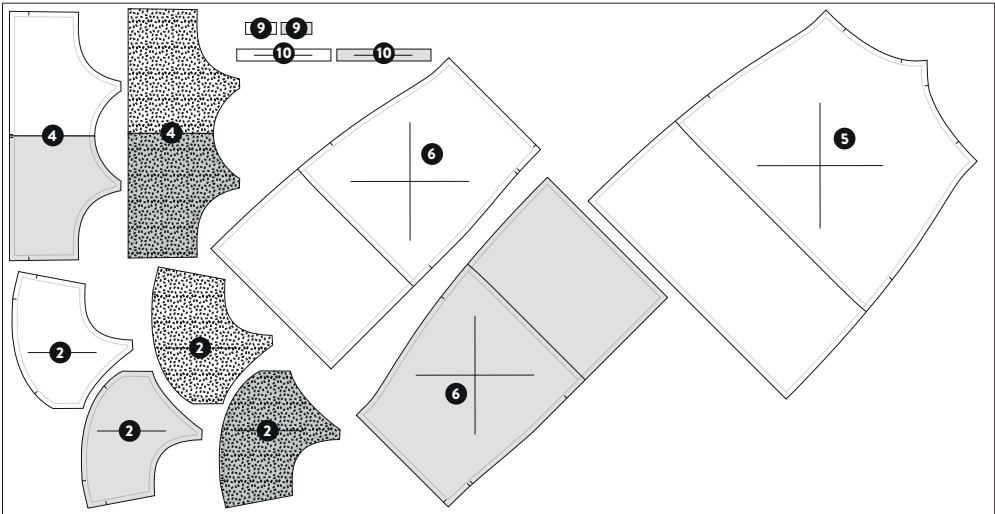
/ VERSION 1 - ROBE LONGUE

COUPE OUVERTE

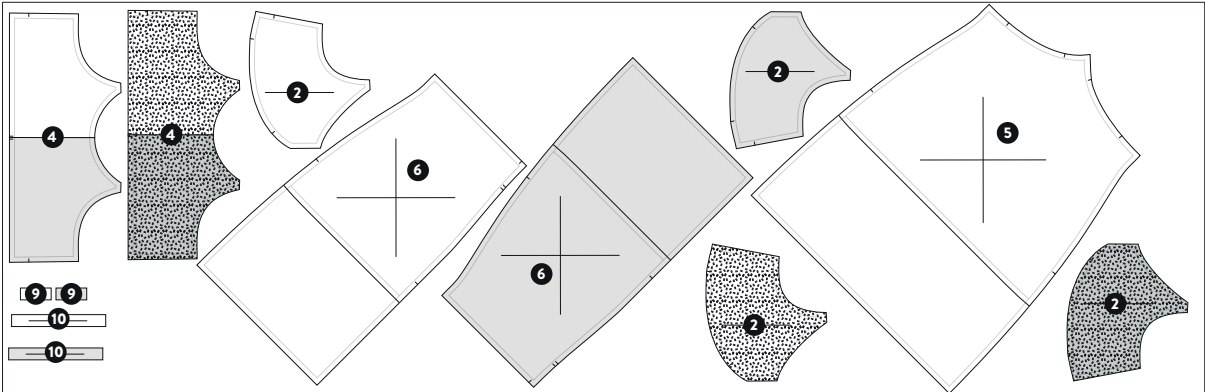


- ENDROIT DU TISSU
- ENVERS DU TISSU
- ENDROIT DOUBLURE
- ENVERS DOUBLURE

TISSU 152 CM / 60"



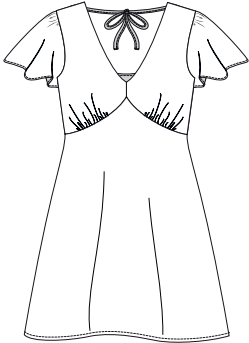
TISSU 114 CM / 45"







plans de coupe / TAILLE E

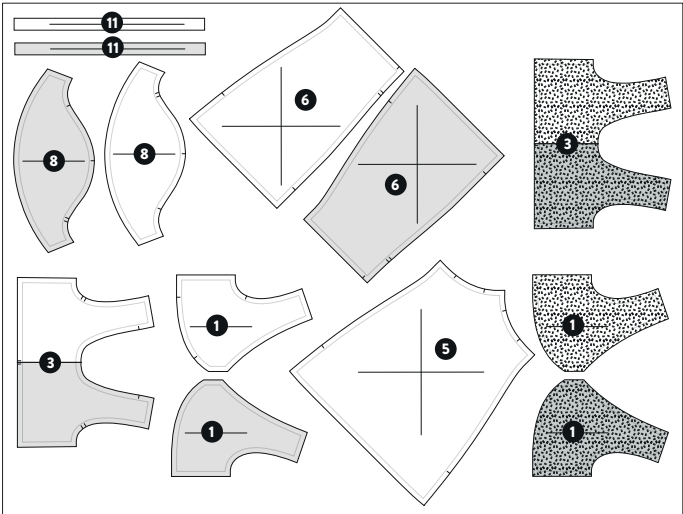
/ VERSION 2 - ROBE COURTE

COUPE OUVERTE

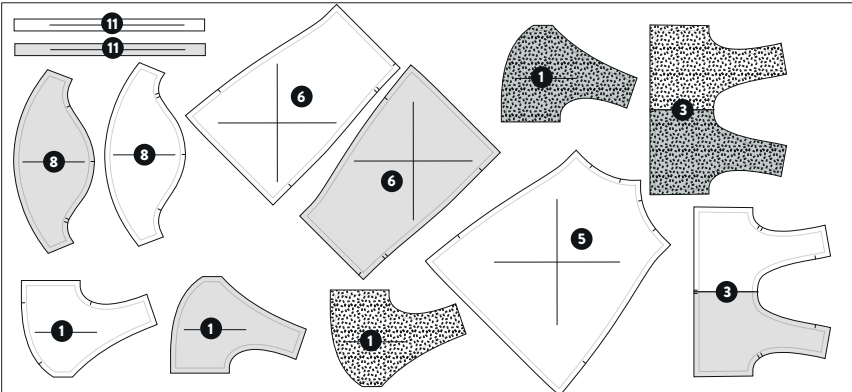


-  ENDROIT DU TISSU
-  ENVERS DU TISSU
-  ENDROIT DOUBLURE
-  ENVERS DOUBLURE

TISSU 152 CM / 60"



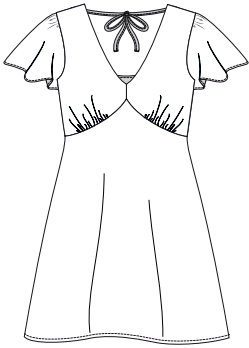
TISSU 114 CM / 45"







plans de coupe / TAILLE J

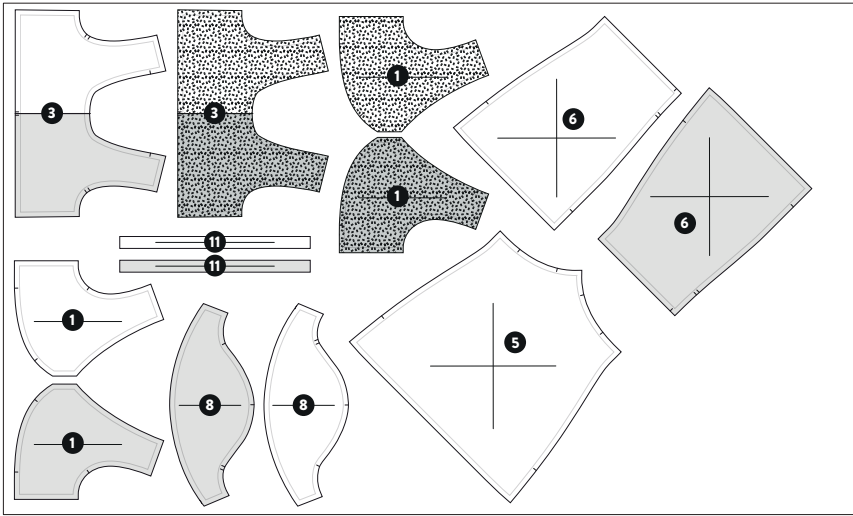
/ VERSION 2 - ROBE COURTE

COUPE OUVERTE

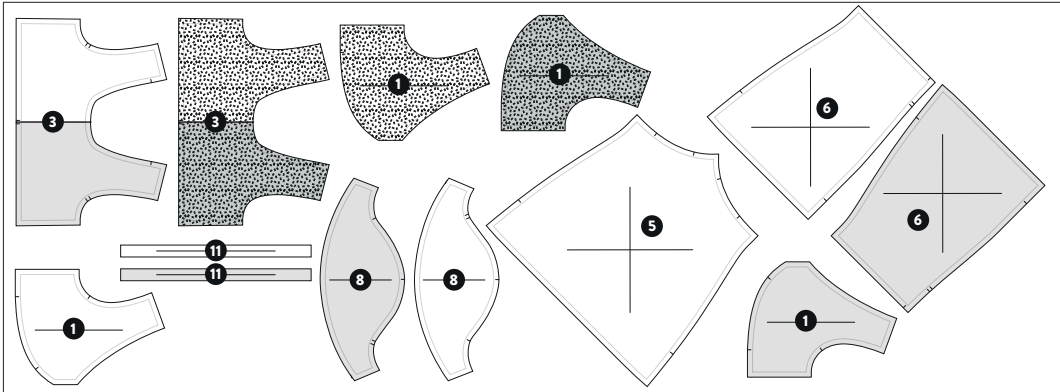


-  ENDROIT DU TISSU
-  ENVERS DU TISSU
-  ENDROIT DOUBLURE
-  ENVERS DOUBLURE

TISSU 152 CM / 60"



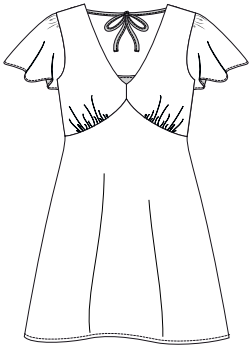
TISSU 114 CM / 45"







plans de coupe / TAILLE 0

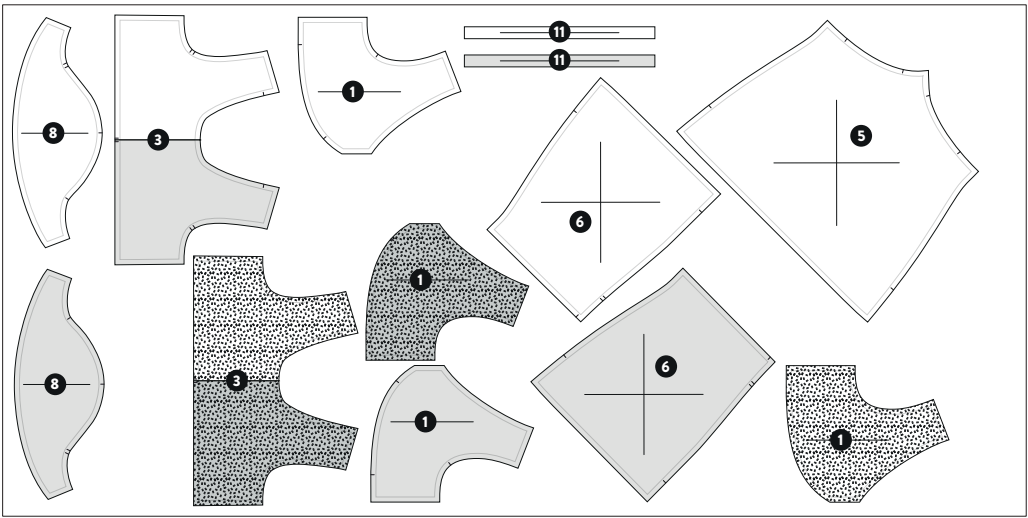
/ VERSION 2 - ROBE COURTE

COUPE OUVERTE

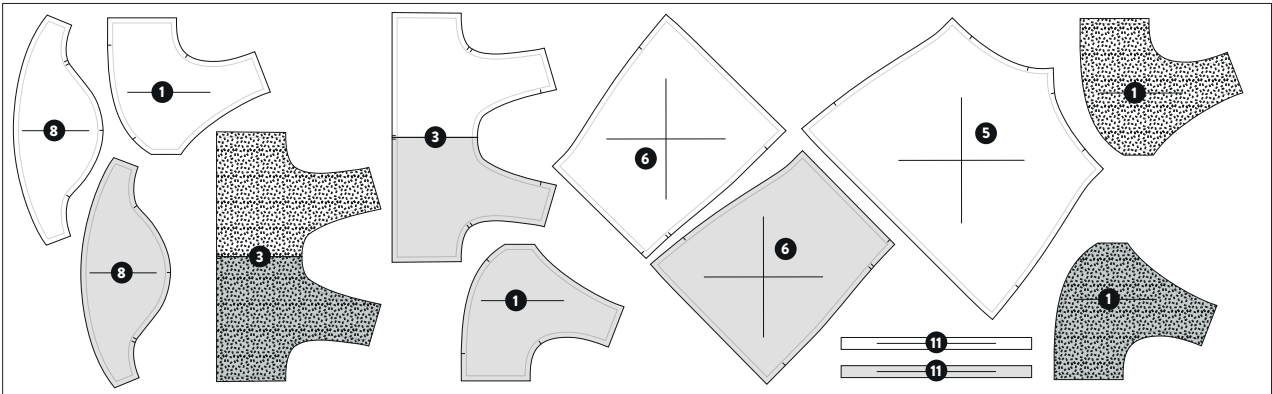


-  ENDROIT DU TISSU
-  ENVERS DU TISSU
-  ENDROIT DOUBLURE
-  ENVERS DOUBLURE

TISSU 152 CM / 60"



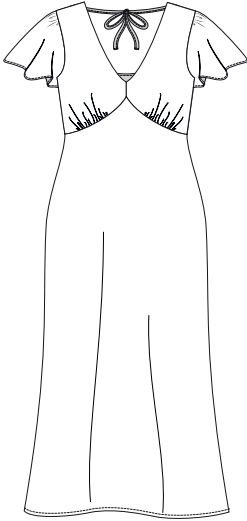
TISSU 114 CM / 45"







plans de coupe / TAILLE E

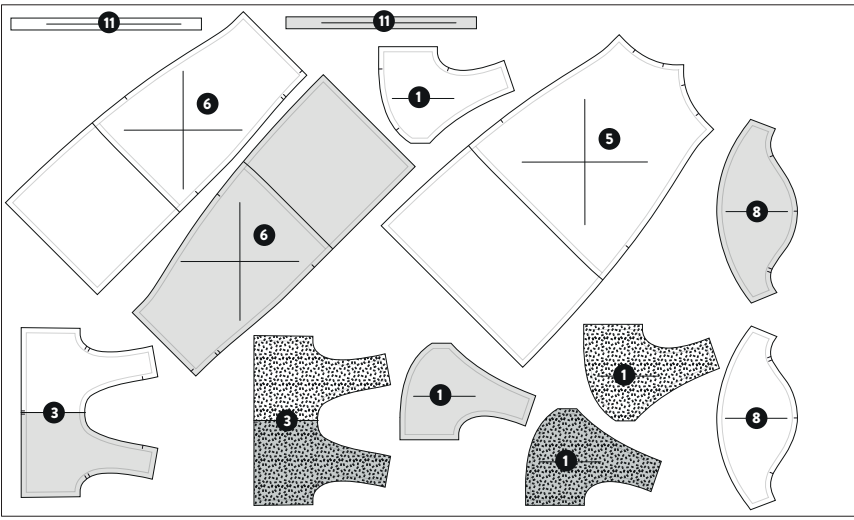
/ VERSION 2 - ROBE LONGUE

COUPE OUVERTE

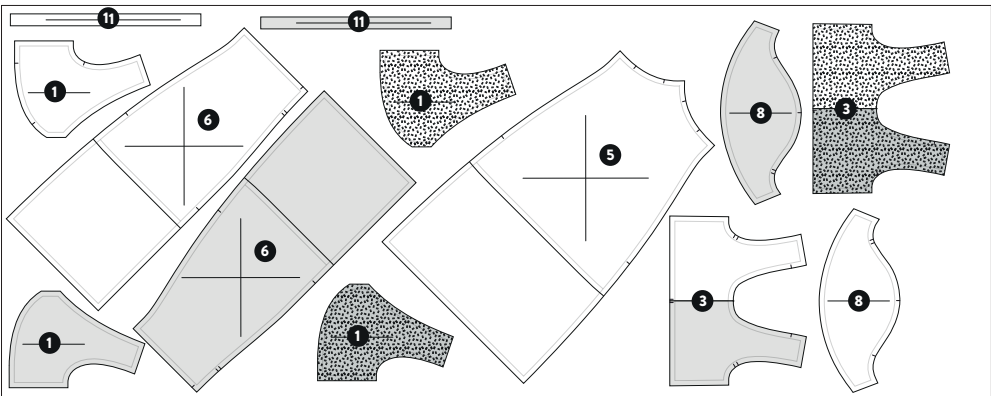


-  ENDROIT DU TISSU
-  ENVERS DU TISSU
-  ENDROIT DOUBLURE
-  ENVERS DOUBLURE

TISSU 152 CM / 60"



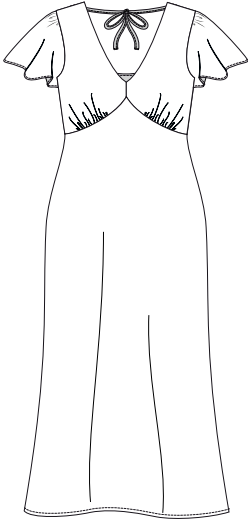
TISSU 114 CM / 45"







plans de coupe / TAILLE J

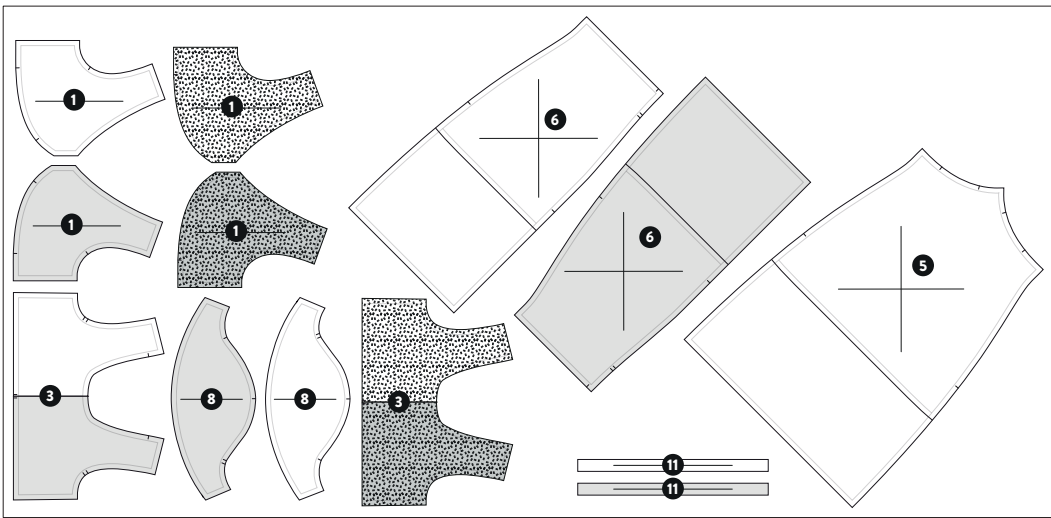
/ VERSION 2 - ROBE LONGUE

COUPE OUVERTE

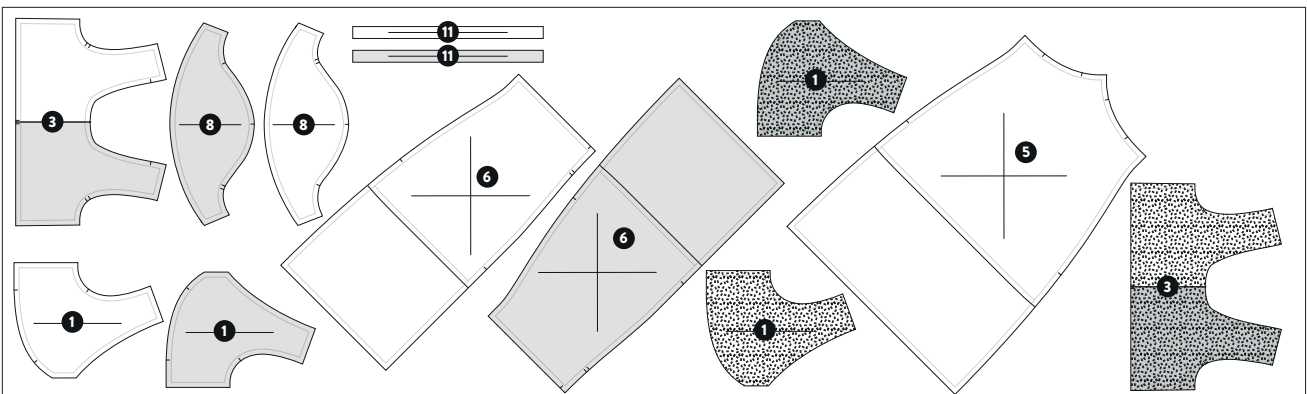


-  ENDROIT DU TISSU
-  ENVERS DU TISSU
-  ENDROIT DOUBLURE
-  ENVERS DOUBLURE

TISSU 152 CM / 60"



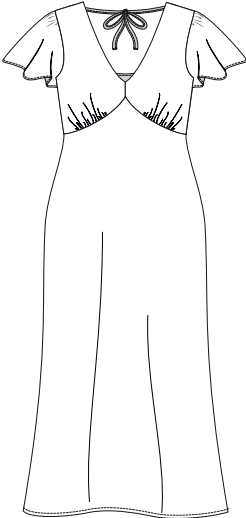
TISSU 114 CM / 45"







plans de coupe / TAILLE 0

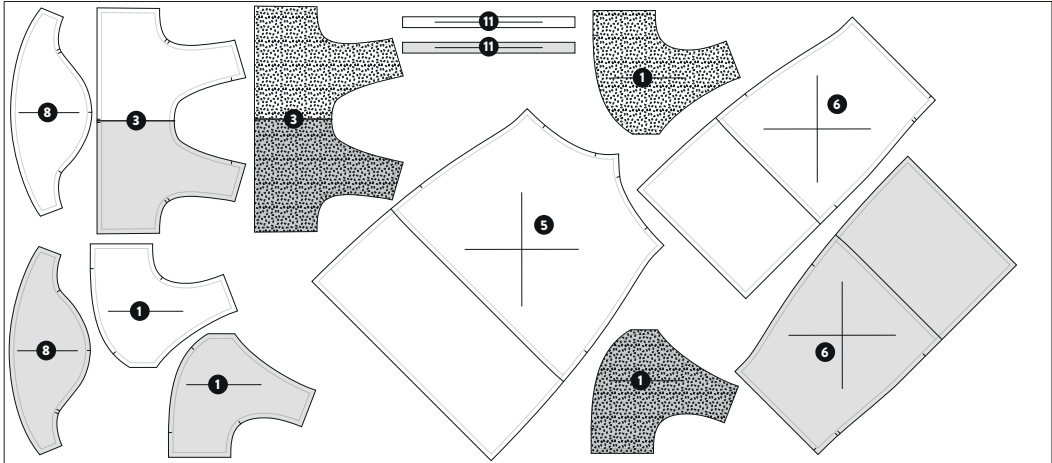
/ VERSION 2 - ROBE LONGUE

COUPE OUVERTE

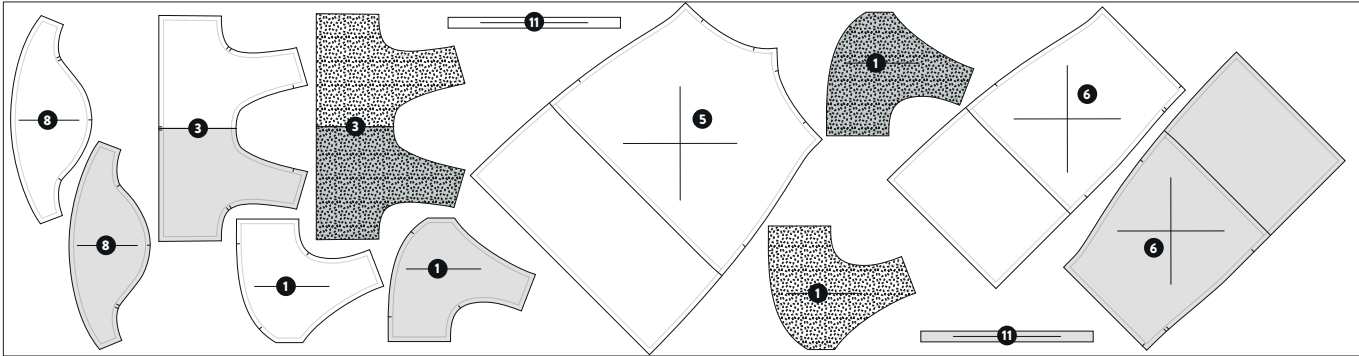


-  ENDROIT DU TISSU
-  ENVERS DU TISSU
-  ENDROIT DOUBLURE
-  ENVERS DOUBLURE

TISSU 152 CM / 60"



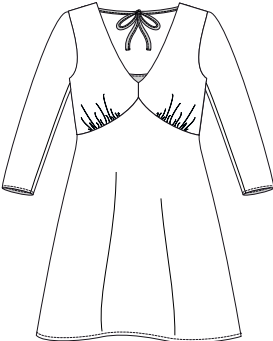
TISSU 114 CM / 45"







plans de coupe / TAILLE E

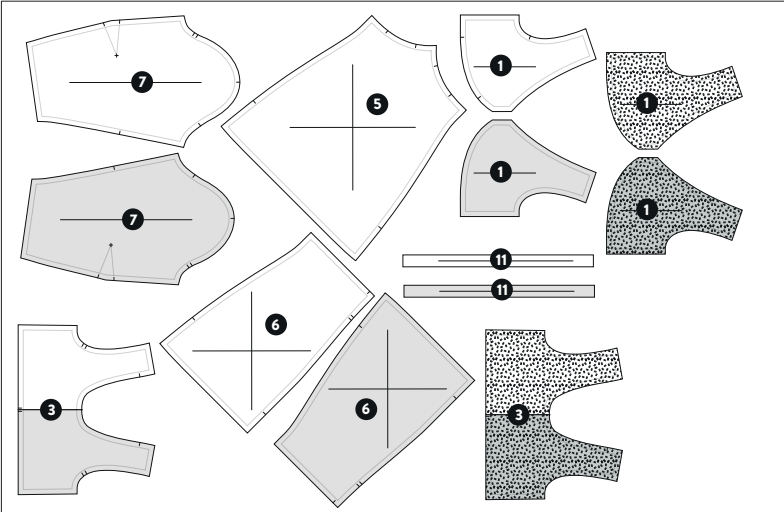
/ VERSION 3 - ROBE COURTE

COUPE OUVERTE

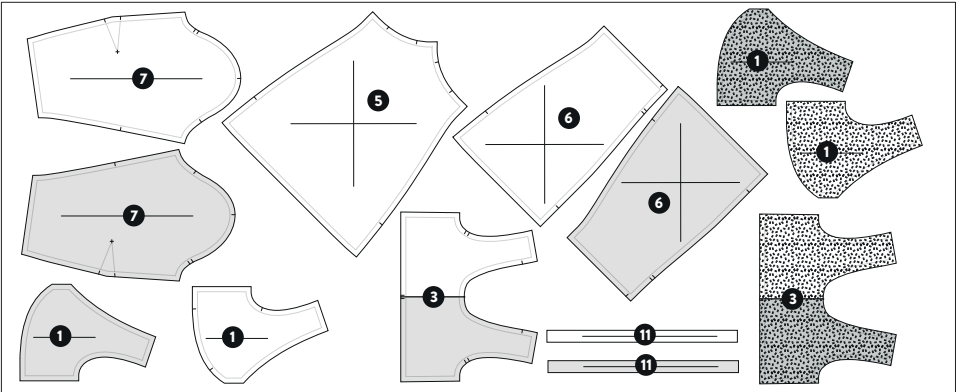


-  ENDROIT DU TISSU
-  ENVERS DU TISSU
-  ENDROIT DOUBLURE
-  ENVERS DOUBLURE

TISSU 152 CM / 60"



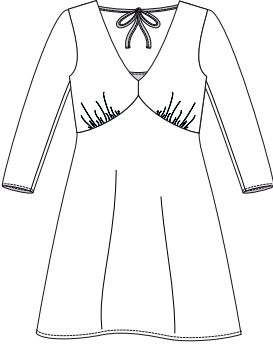
TISSU 114 CM / 45"







plans de coupe / TAILLE J

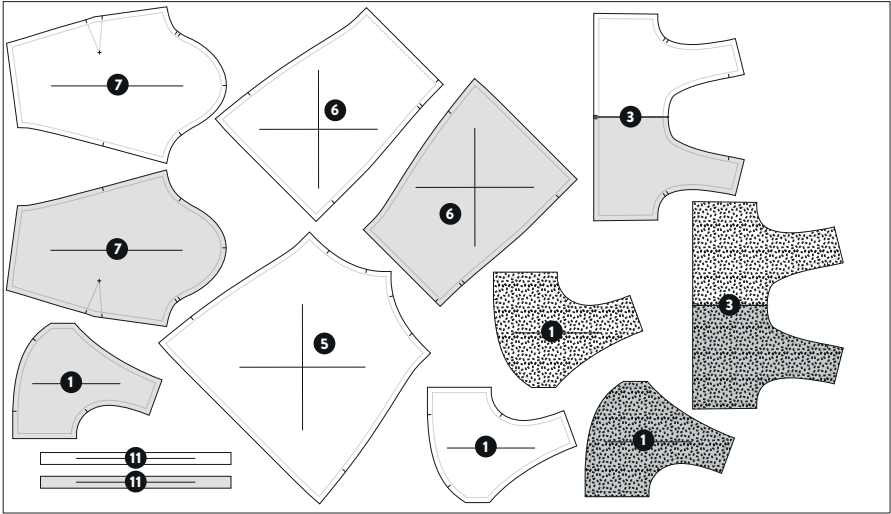
/ VERSION 3 - ROBE COURTE

COUPE OUVERTE

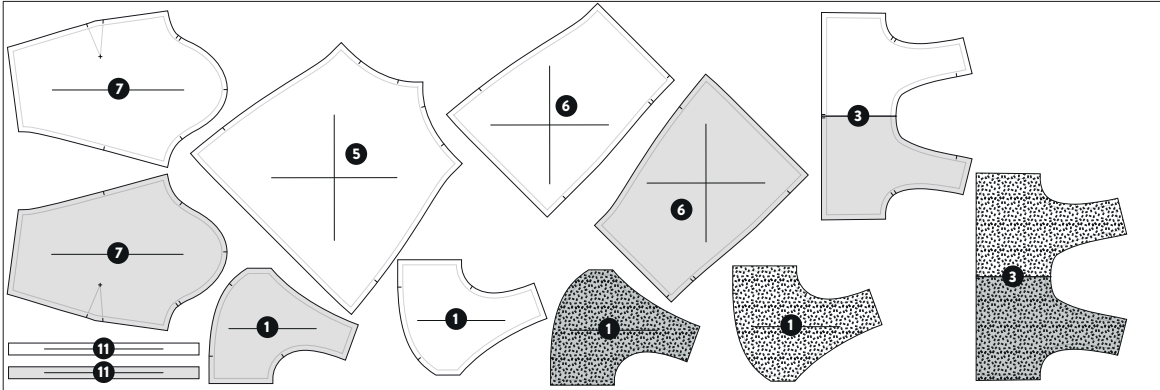


-  ENDROIT DU TISSU
-  ENVERS DU TISSU
-  ENDROIT DOUBLURE
-  ENVERS DOUBLURE

TISSU 152 CM / 60"



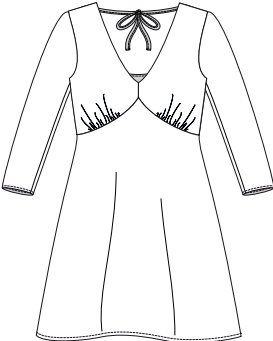
TISSU 114 CM / 45"







plans de coupe / TAILLE 0

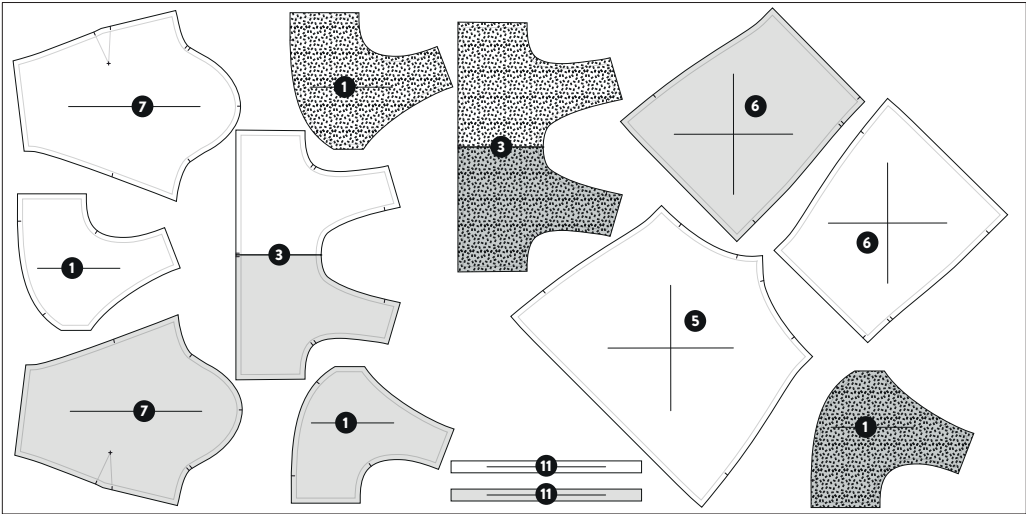
/ VERSION 3 - ROBE COURTE

COUPE OUVERTE

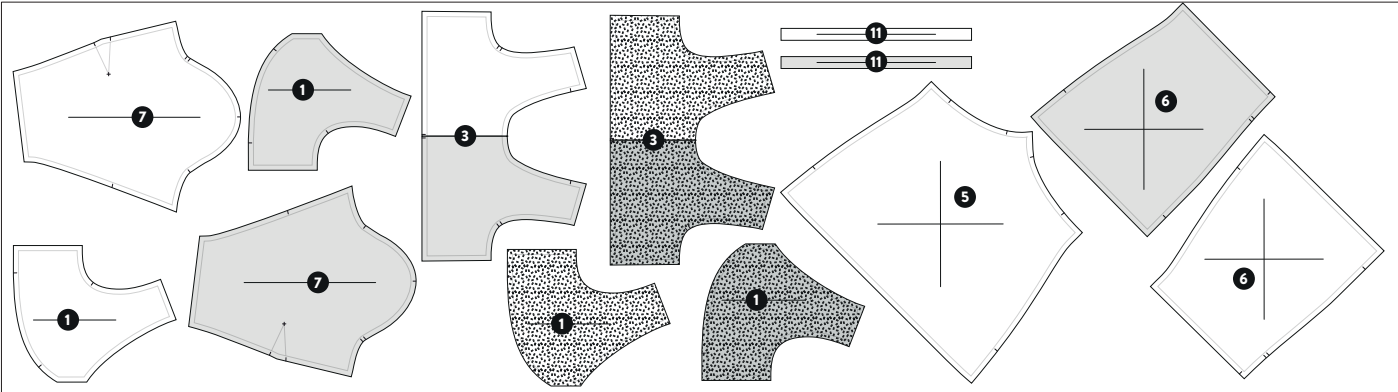


-  ENDROIT DU TISSU
-  ENVERS DU TISSU
-  ENDROIT DOUBLURE
-  ENVERS DOUBLURE

TISSU 152 CM / 60"



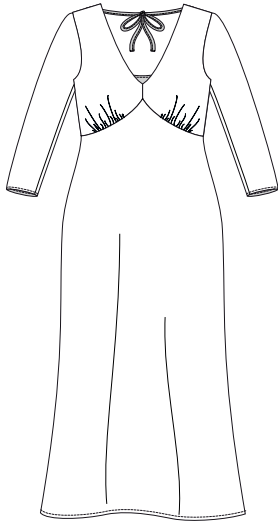
TISSU 114 CM / 45"







plans de coupe / TAILLE E

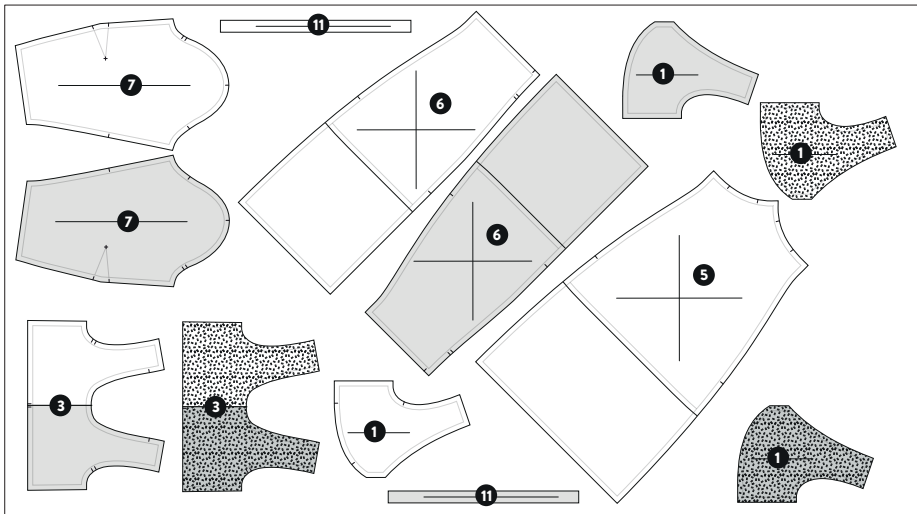
/ VERSION 3 - ROBE LONGUE

COUPE OUVERTE

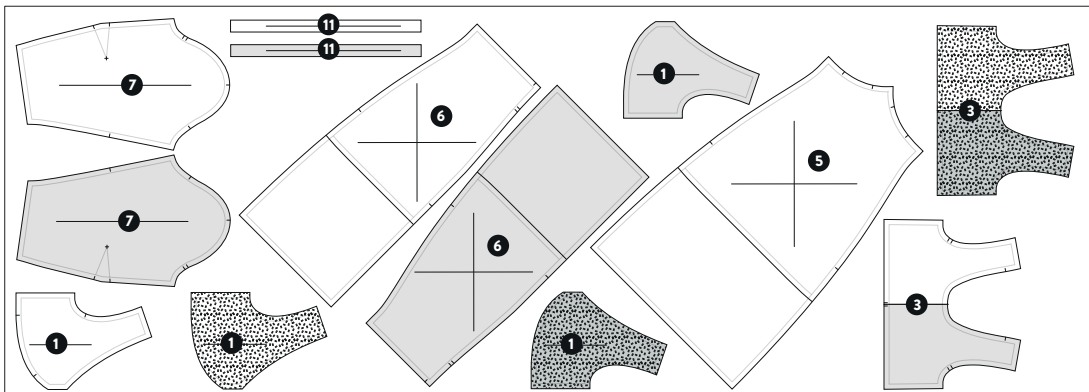


-  ENDROIT DU TISSU
-  ENVERS DU TISSU
-  ENDROIT DOUBLURE
-  ENVERS DOUBLURE

TISSU 152 CM / 60"



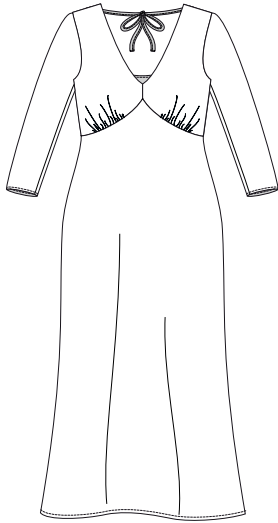
TISSU 114 CM / 45"







plans de coupe / TAILLE J

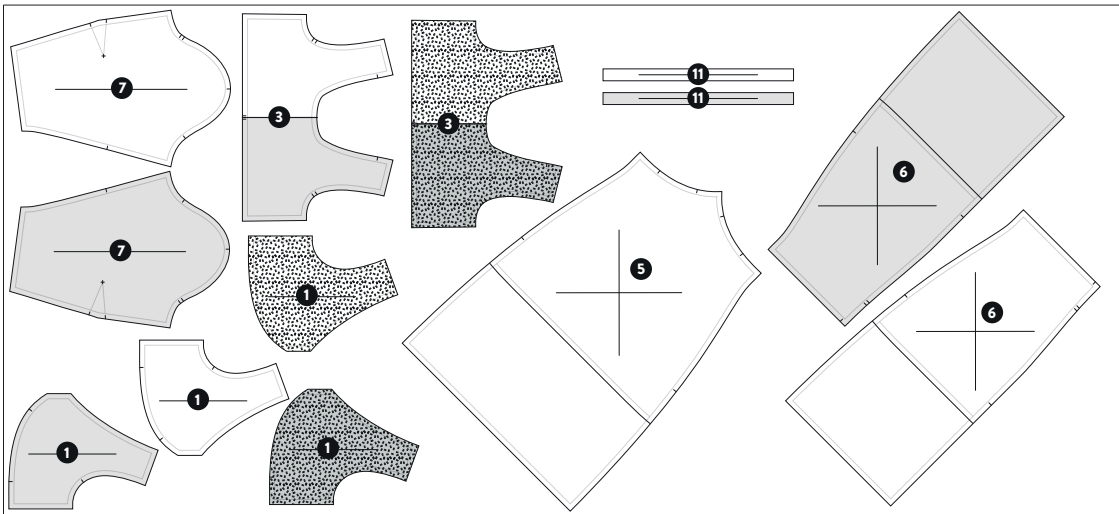
/ VERSION 3 - ROBE LONGUE

COUPE OUVERTE

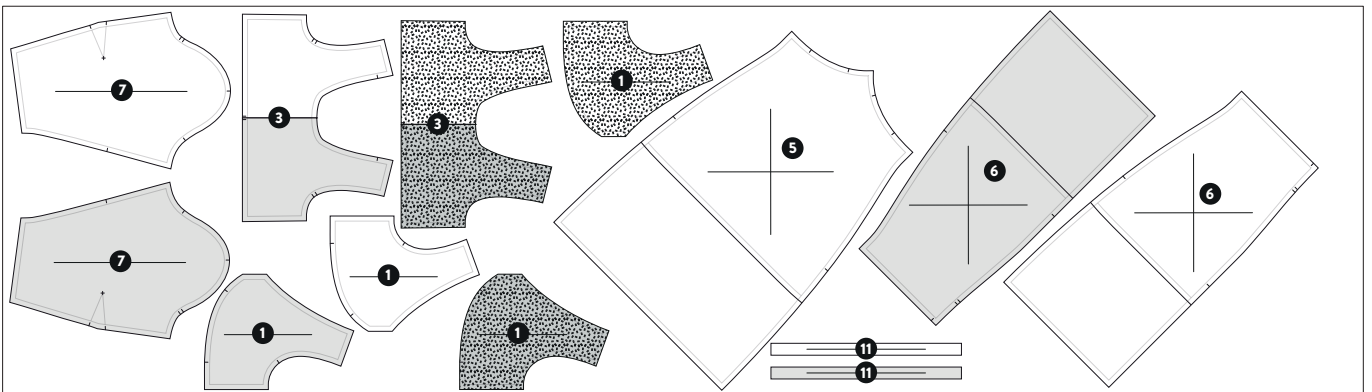


-  ENDROIT DU TISSU
-  ENVERS DU TISSU
-  ENDROIT DOUBLURE
-  ENVERS DOUBLURE

TISSU 152 CM / 60"



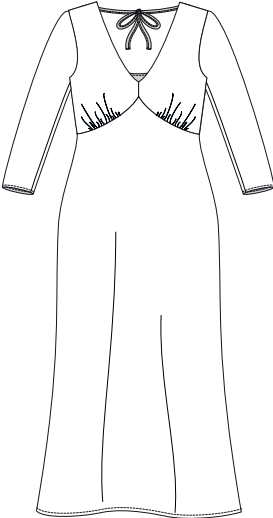
TISSU 114 CM / 45"







plans de coupe / TAILLE 0

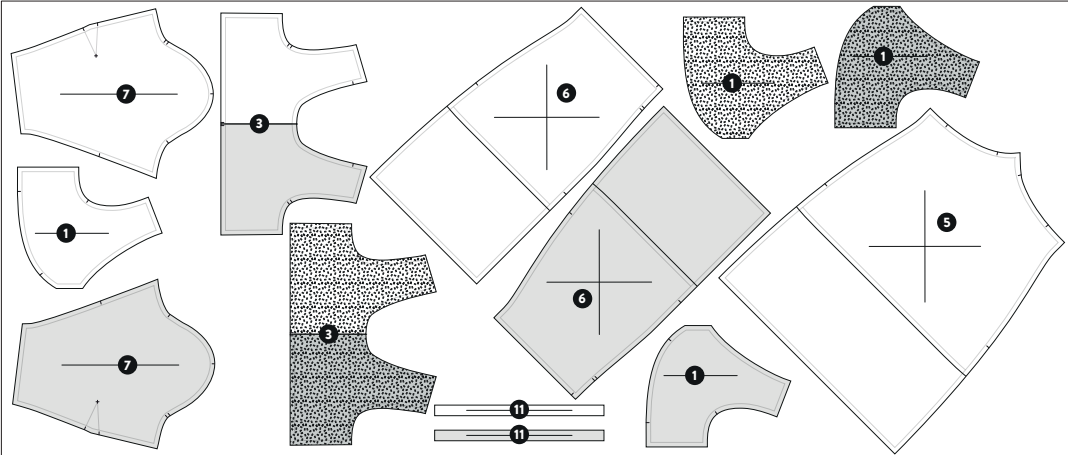
/ VERSION 3 - ROBE LONGUE

COUPE OUVERTE



-  ENDROIT DU TISSU
-  ENVERS DU TISSU
-  ENDROIT DOUBLURE
-  ENVERS DOUBLURE

TISSU 152 CM / 60"



TISSU 114 CM / 45"

