

# les perlines

## LA ROBE COVE

### TABLEAU DES REPÈRES

←→ droit-fil

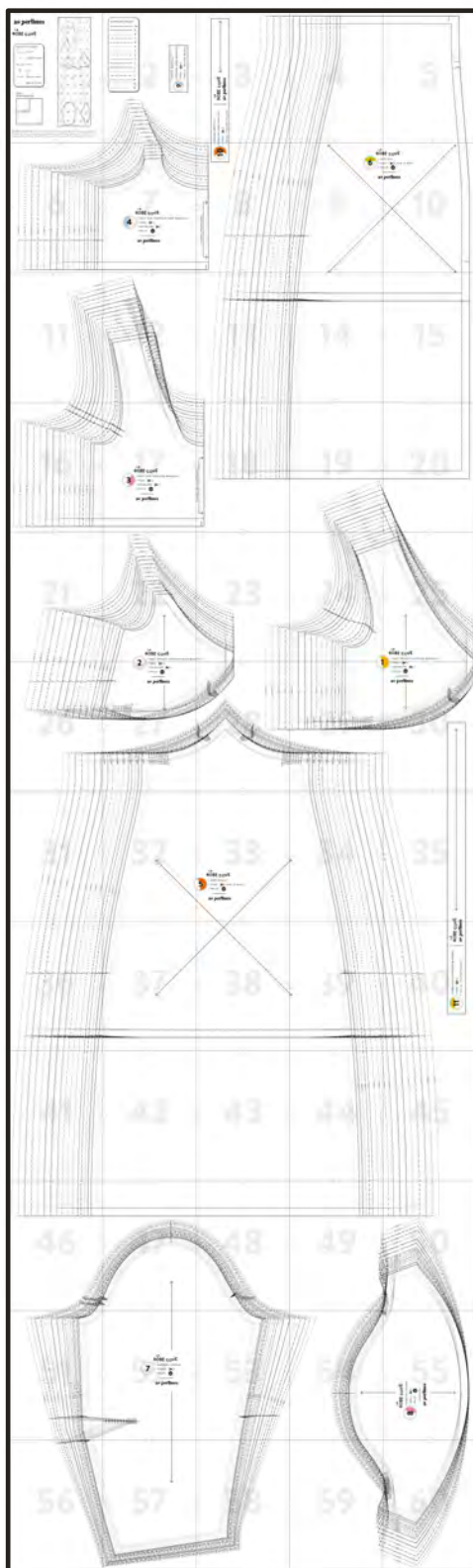
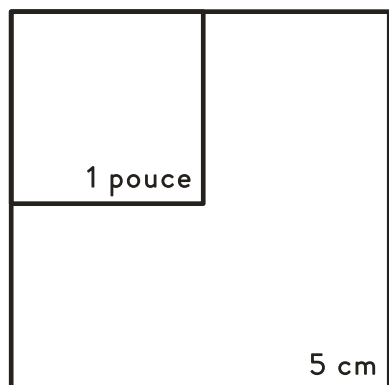
↗↖ pliure

⊥ cran

— ligne de coupe

— ligne de couture

### TEST D'IMPRESSION



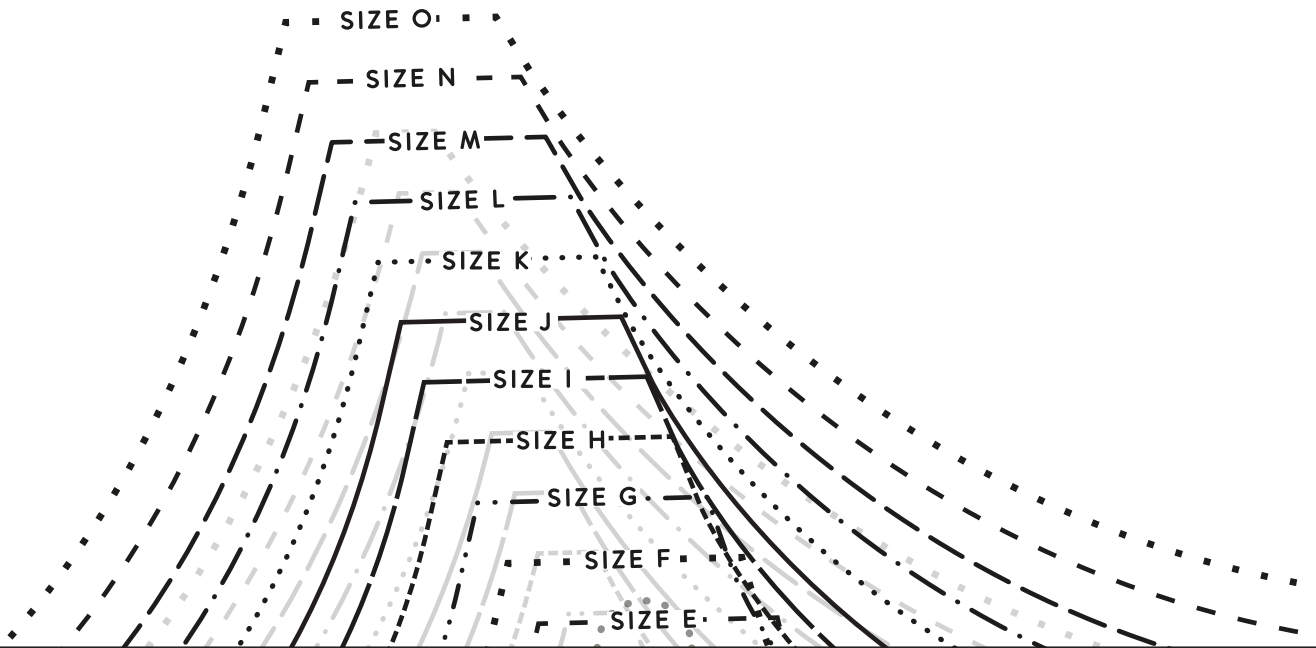
© 2023 Les Perlines. Tous droits réservés. Ce patron est destiné à un usage personnel seulement. Toute reproduction ou distribution, partielle ou totale, est interdite. Toute vente commerciale de vêtements faits à partir de ce patron est strictement interdite.

# GUIDE DES TAILLES

_____	AA
_____	A
.....	B
.....	C
_____	D
_____	E
.....	F
.....	G
_____	H
_____	I
_____	J
.....	K
.....	L
_____	M
_____	N
.....	O



/ PETITE BRETELLE  
(VERSION SANS MANCHE)  
/ TISSU : ✂ 2  
/ TAILLE : TOUTES TAILLES



LONGUE BRETELLE

(VERSION SANS MANCHE)

TISSU :  2

TAILLE : TOUTES TAILLES

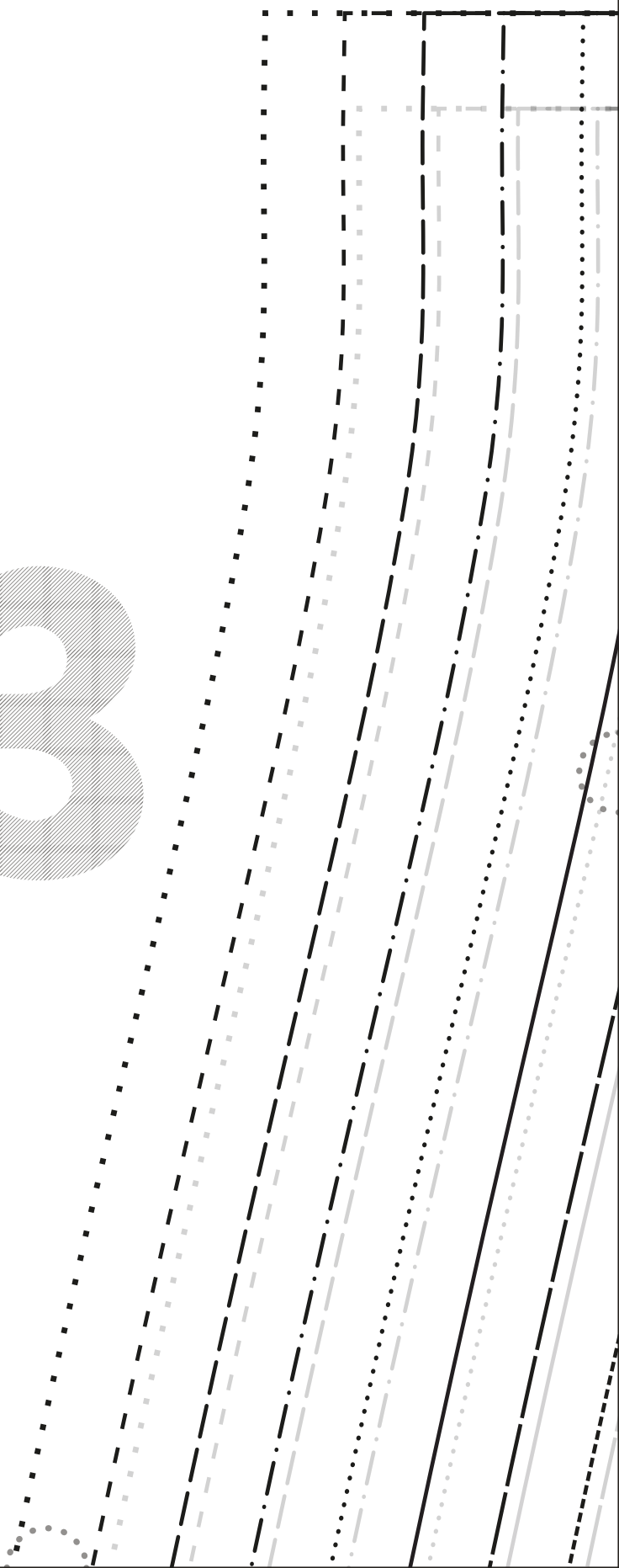
LA

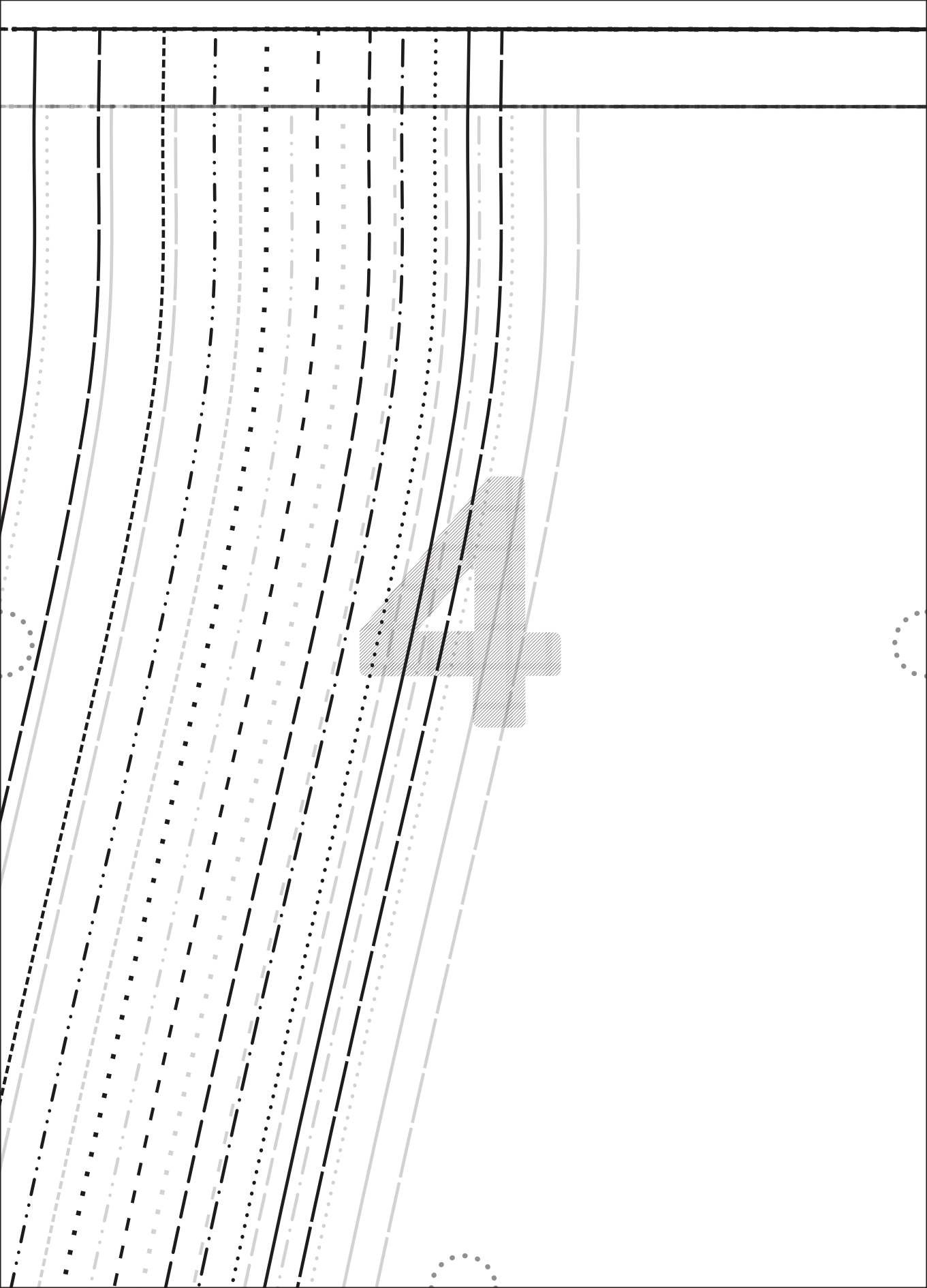
**ROBE COVE**

*les perlines*



3







5

11



SIZE O

SIZE N

SIZE M

SIZE L

SIZE K

SIZE J

SIZE I

SIZE H

SIZE G

SIZE F

SIZE E

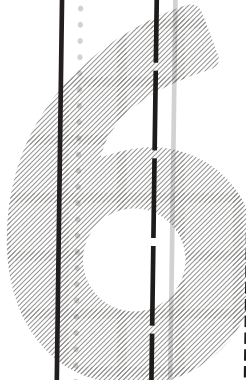
SIZE D

SIZE C

SIZE B

SIZE A

SIZE AA





— SIZE D —

— SIZE C —

..... SIZE B .....

— SIZE A —

— SIZE AA —

7

LA  
**ROBE COVE**



/ HAUT DOS (VERSION SANS MANCHE)

/ TISSU : ✂ 1 SUR LA PLIURE

/ DOUBLURE : ✂ 1 SUR LA PLIURE

/ TAILLE : **AA**



*les perlines*

PLIURE / MILIEU DOS



10

SIZE O

SIZE N

SIZE M

SIZE L

SIZE K

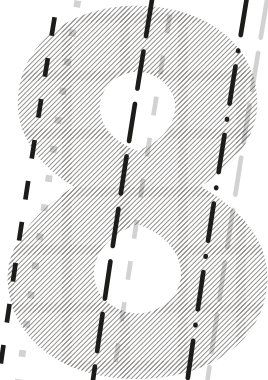
SIZE J

SIZE I

SIZE H

SIZE G

SIZE F



LA  
RO



/ JU

/ TIS

/ TA

*les*

9

SIZE E

SIZE D

SIZE C

SIZE B

SIZE A

SIZE AA

# BE COVE

PE DOS

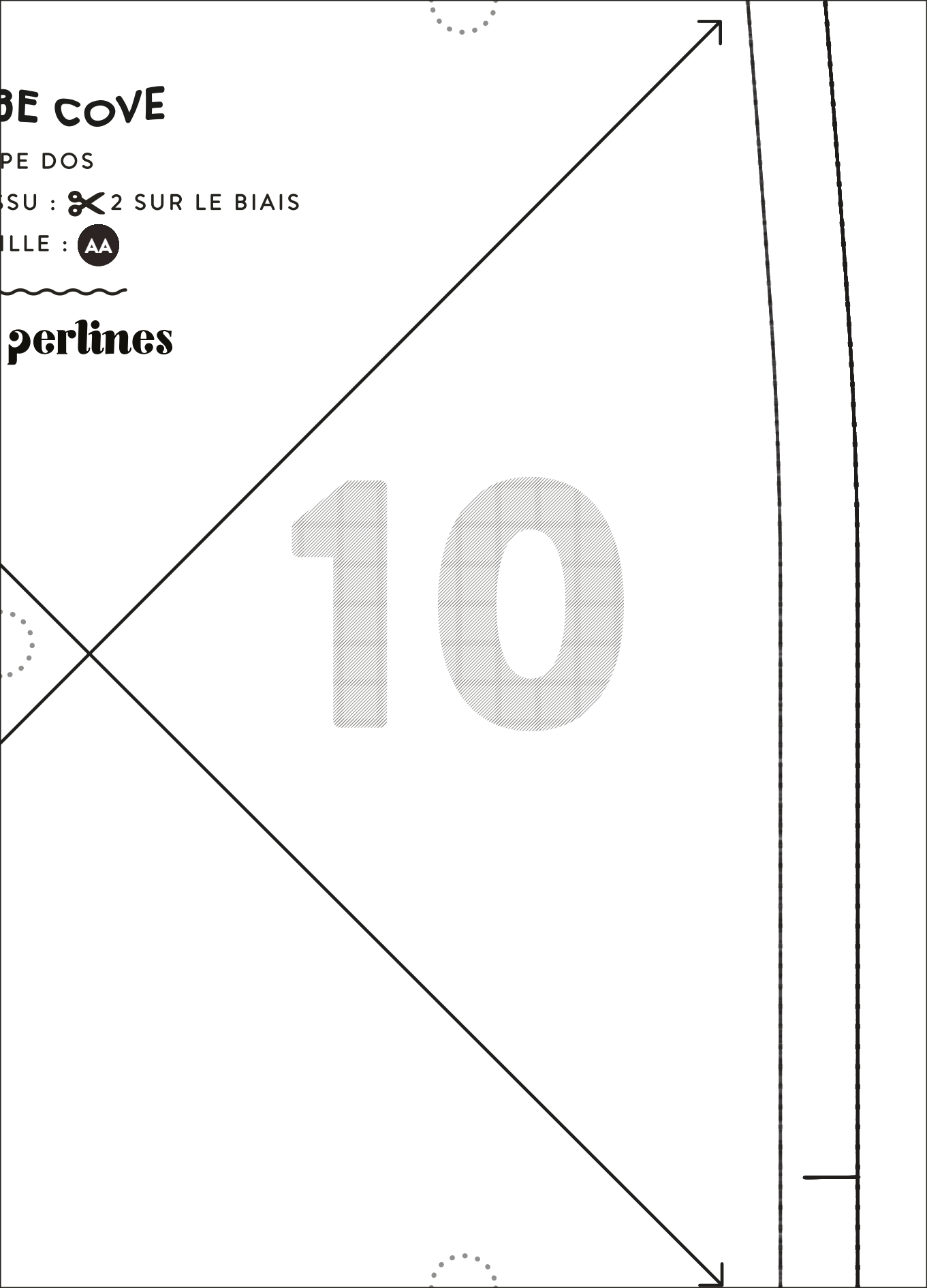
SU : ✂ 2 SUR LE BIAIS

ILLE : AA

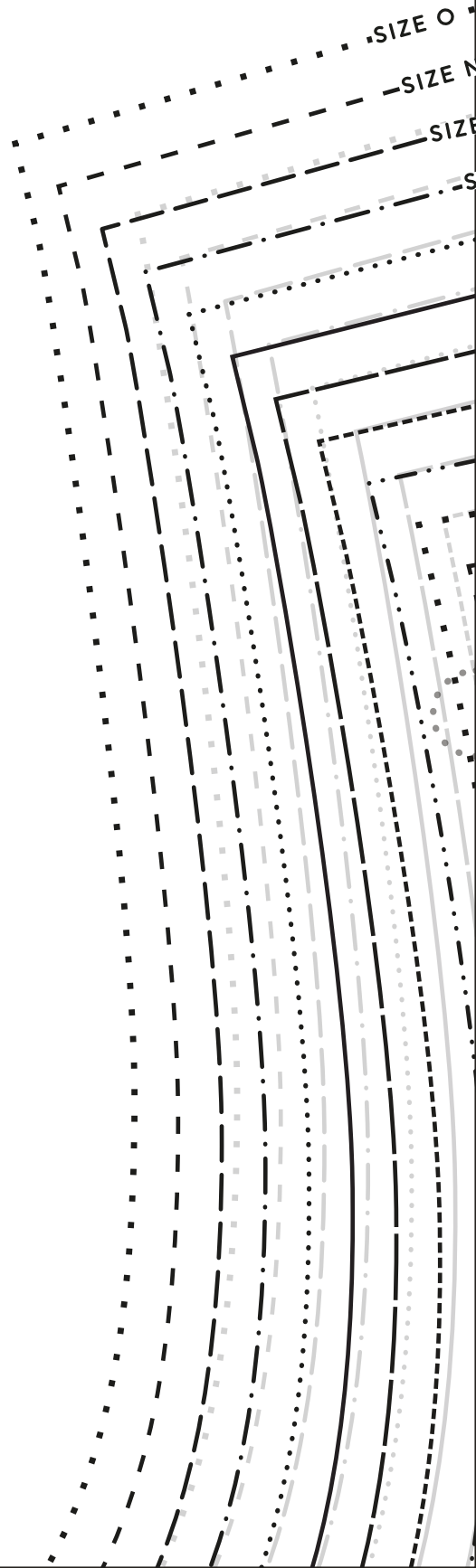


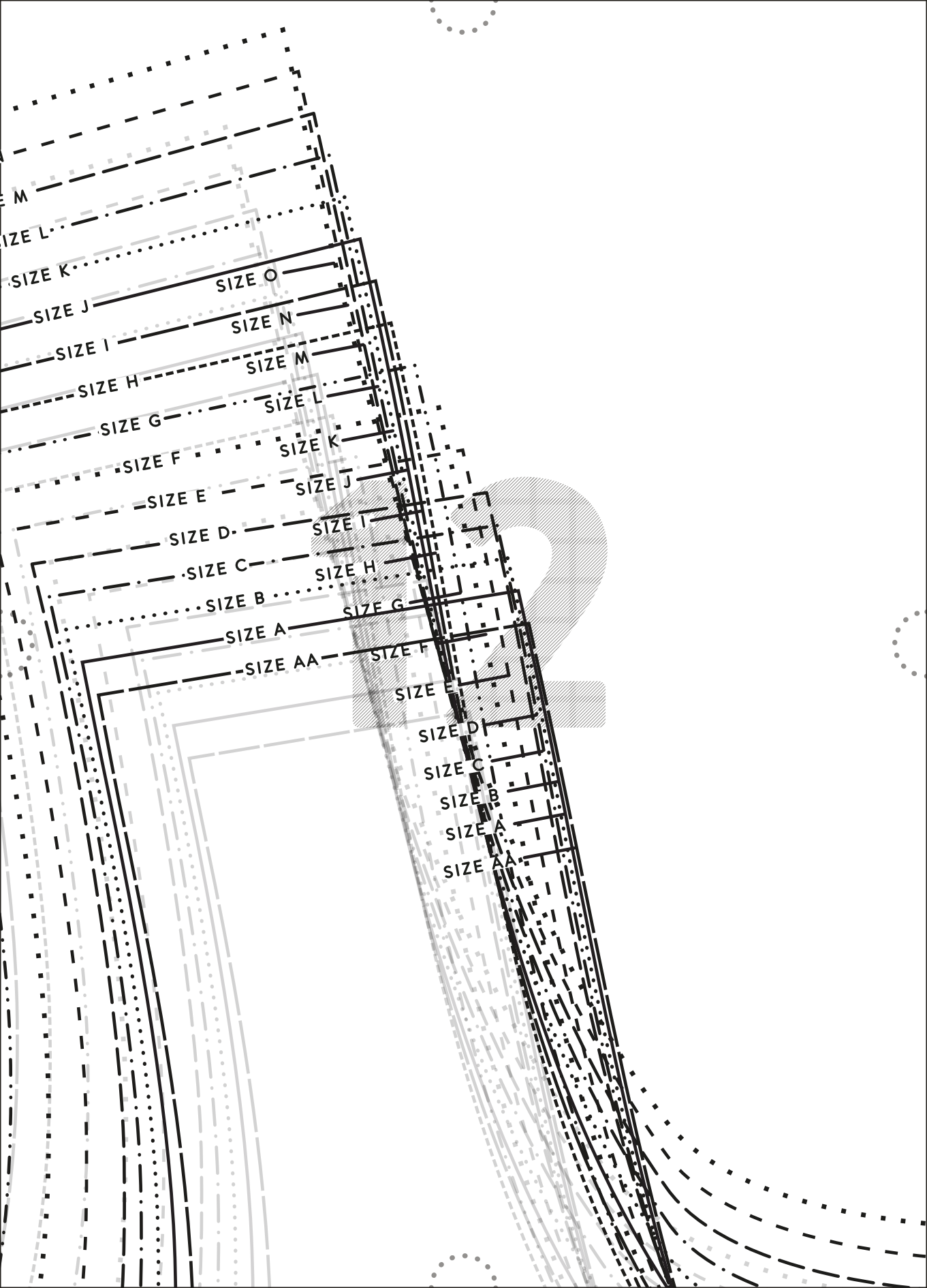
**perlines**

10



1 1







13

COUPER ICI POUR L

14

A VERSION COURTE

15

SIZE O

SIZE N

SIZE M

SIZE L

SIZE K

SIZE J

SIZE I

SIZE H

SIZE G

SIZE F

SIZE E

SIZE D

SIZE C

SIZE B

SIZE A

SIZE AA

16

# 17

## LA ROBE COVE



3

/ HAUT DOS (VERSION MANCHE)

/ TISSU : ✂ 1 SUR LA PLIURE

/ DOUBLURE : ✂ 1 SUR LA PLIURE

/ TAILLE : AA

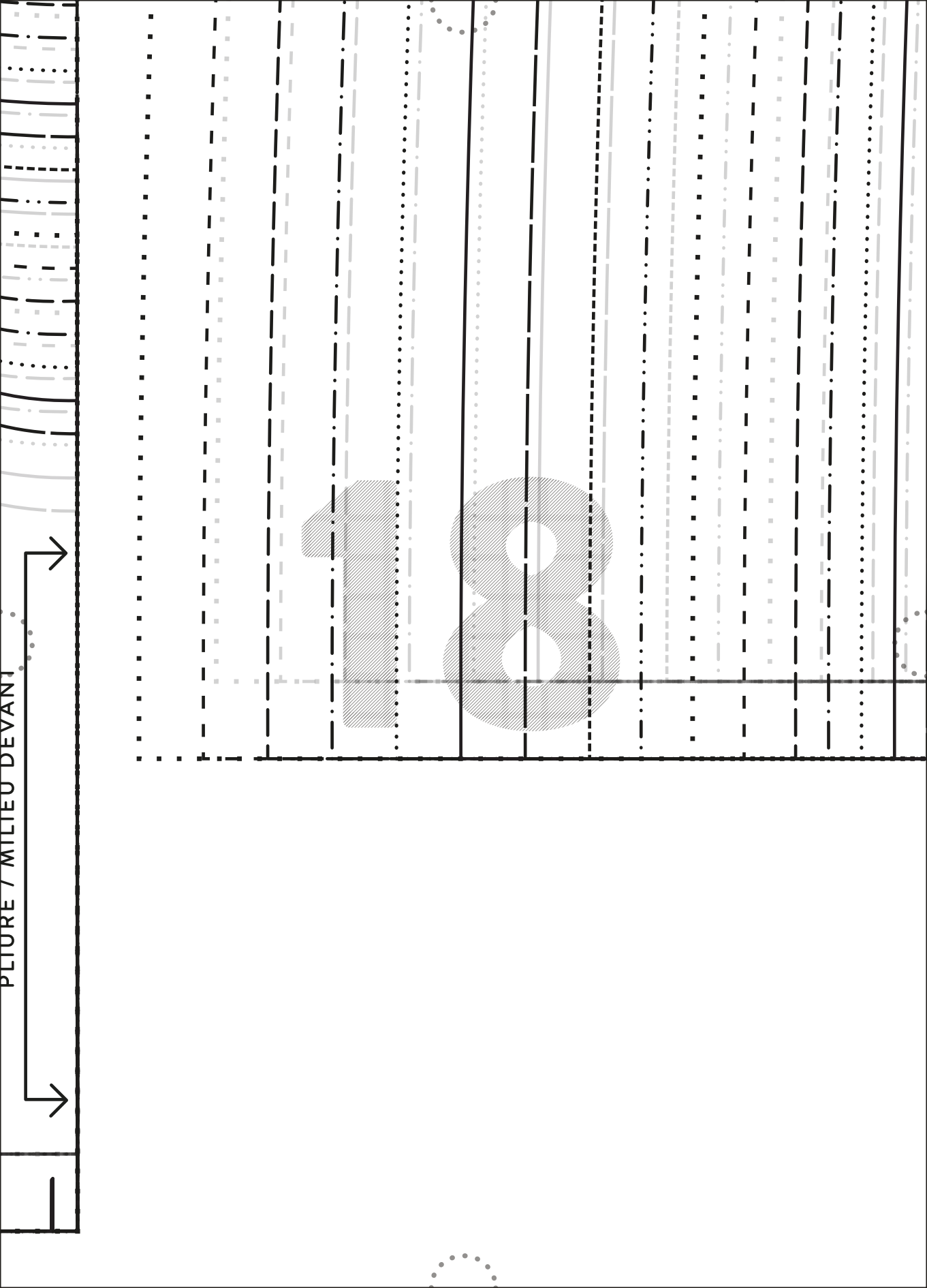


*les perlines*

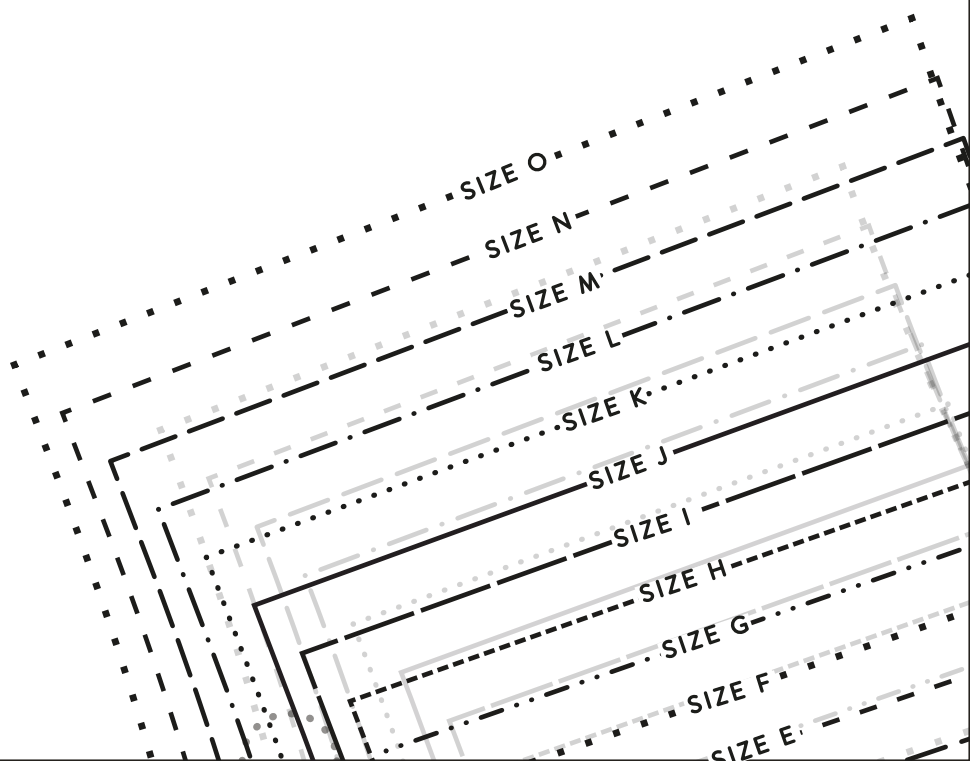
PLIURE / MILIEU DEVANT



18



19



20



21

SIZE O.

SIZE N.

SIZE M.

SIZE L.

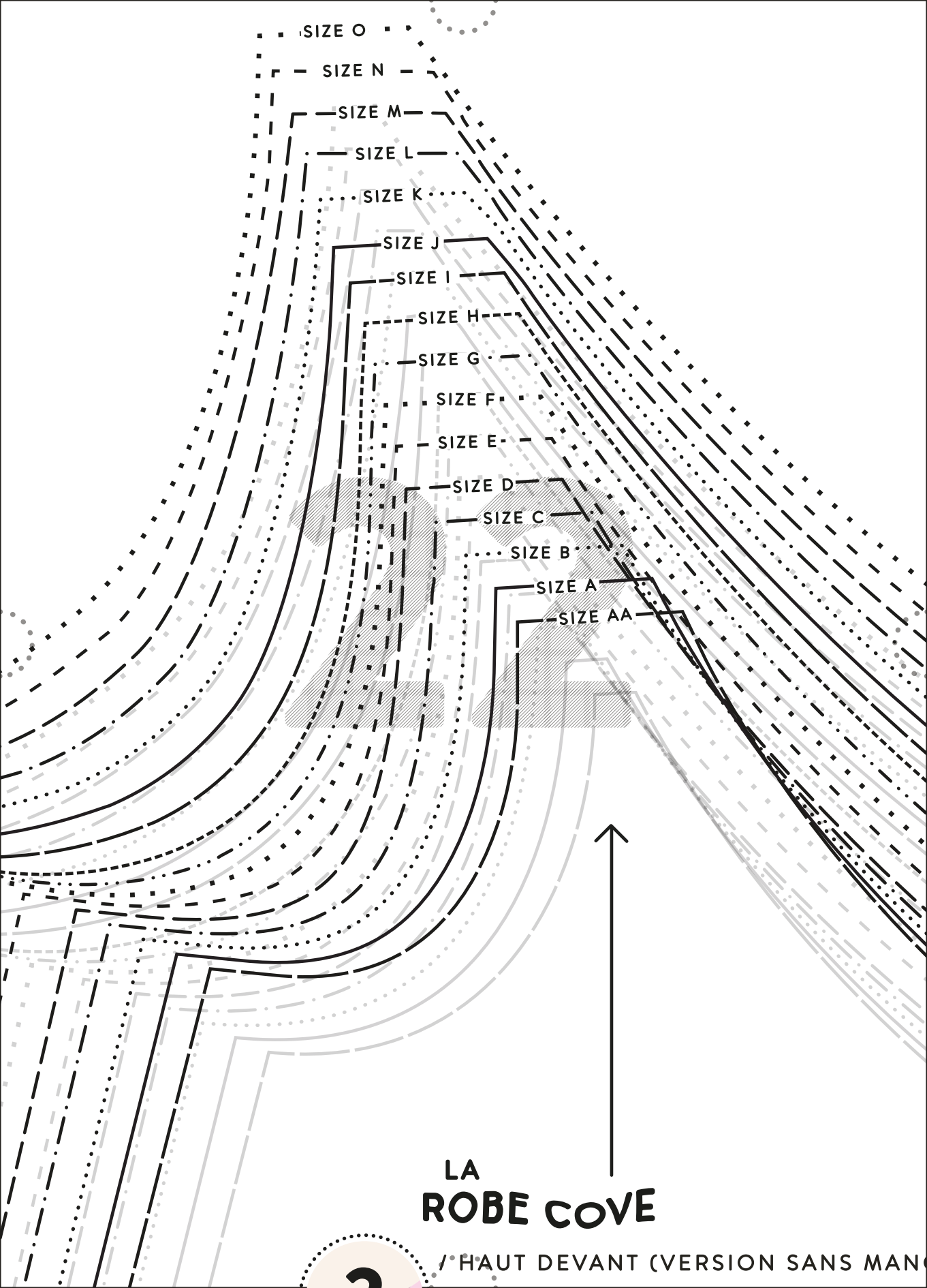
SIZE K.

SIZE J.

SIZE I.

SIZE H.

SIZE G.



SIZE O

SIZE N

SIZE M

SIZE L

SIZE K

SIZE J

SIZE I

SIZE H

SIZE G

SIZE F

SIZE E

SIZE D

SIZE C

SIZE B

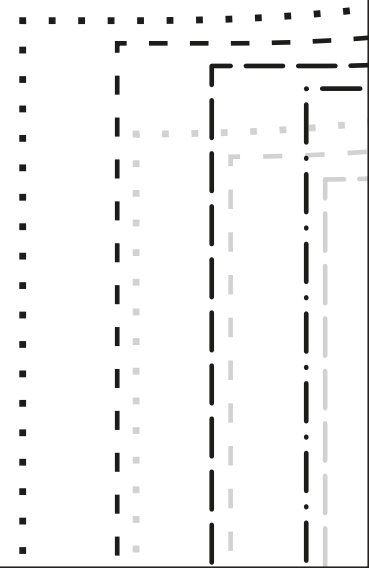
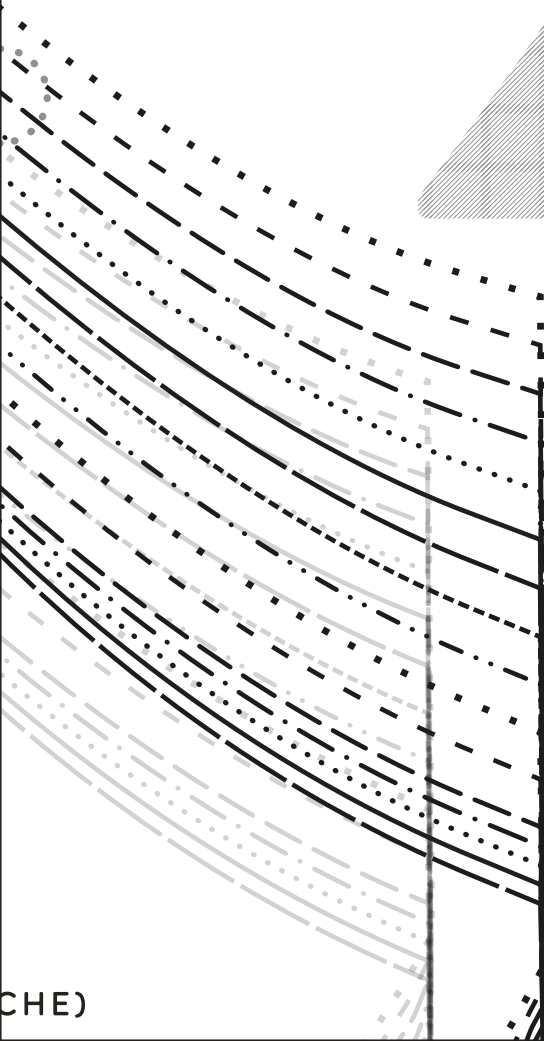
SIZE A

SIZE AA

LA  
**ROBE COVE**

17 HAUT DEVANT (VERSION SANS MANCHES)

23



SIZE D

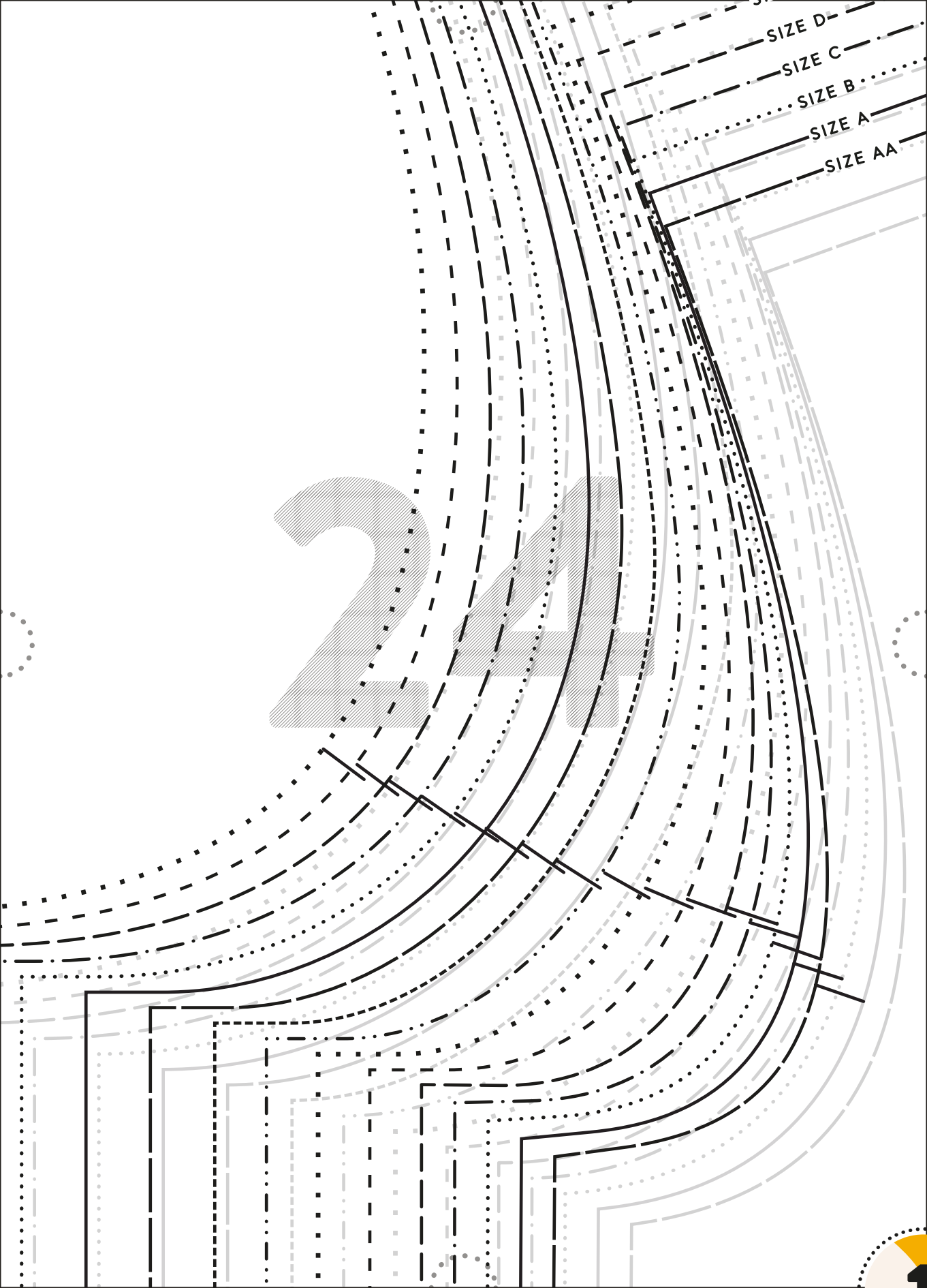
SIZE C

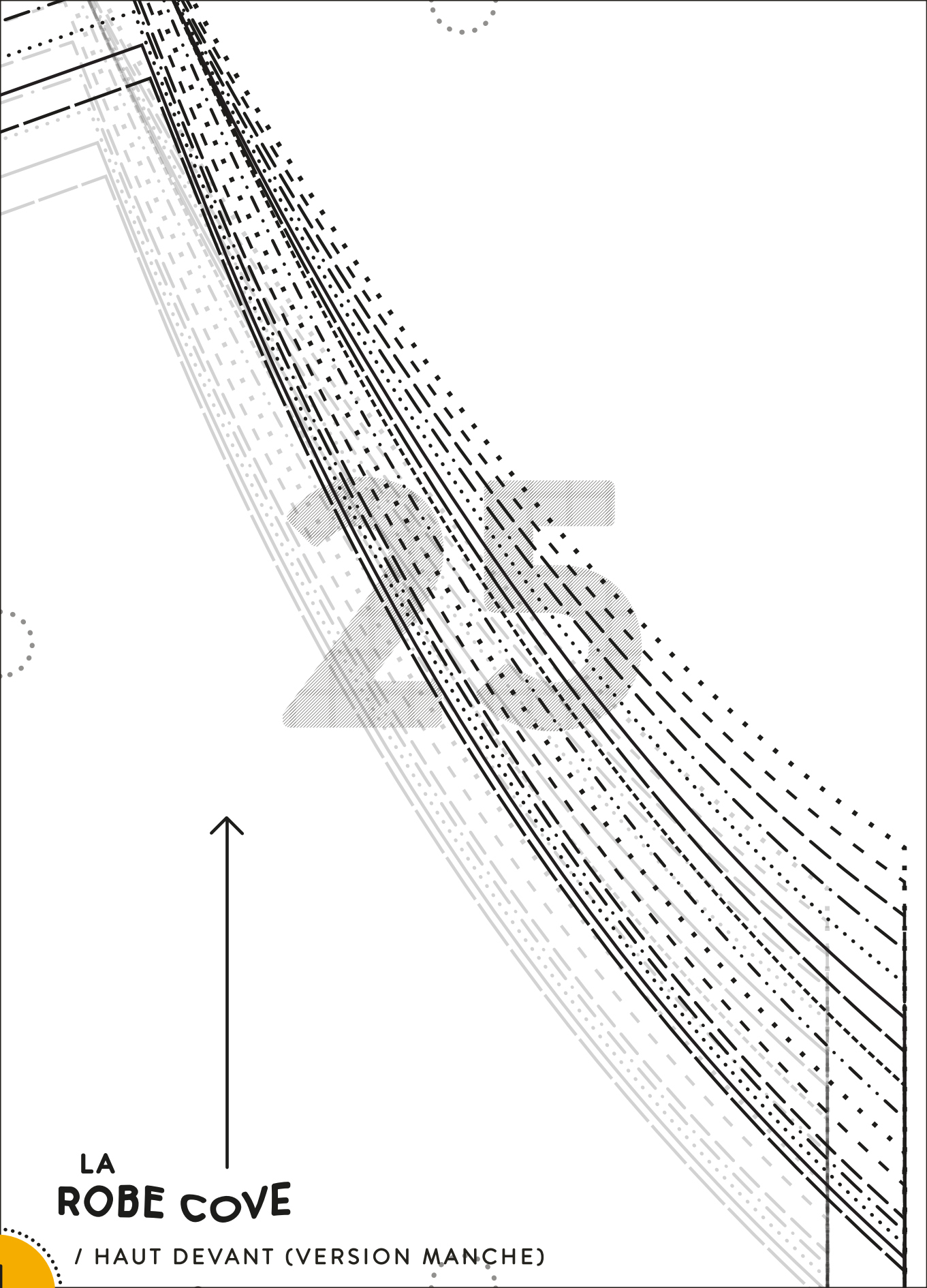
SIZE B

SIZE A

SIZE AA

24

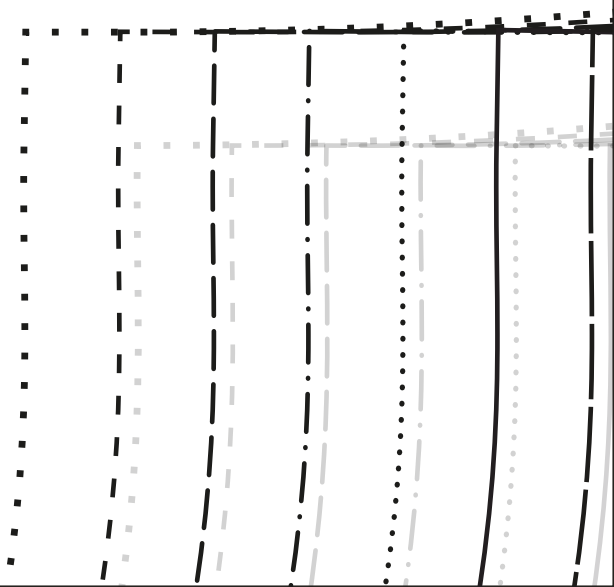
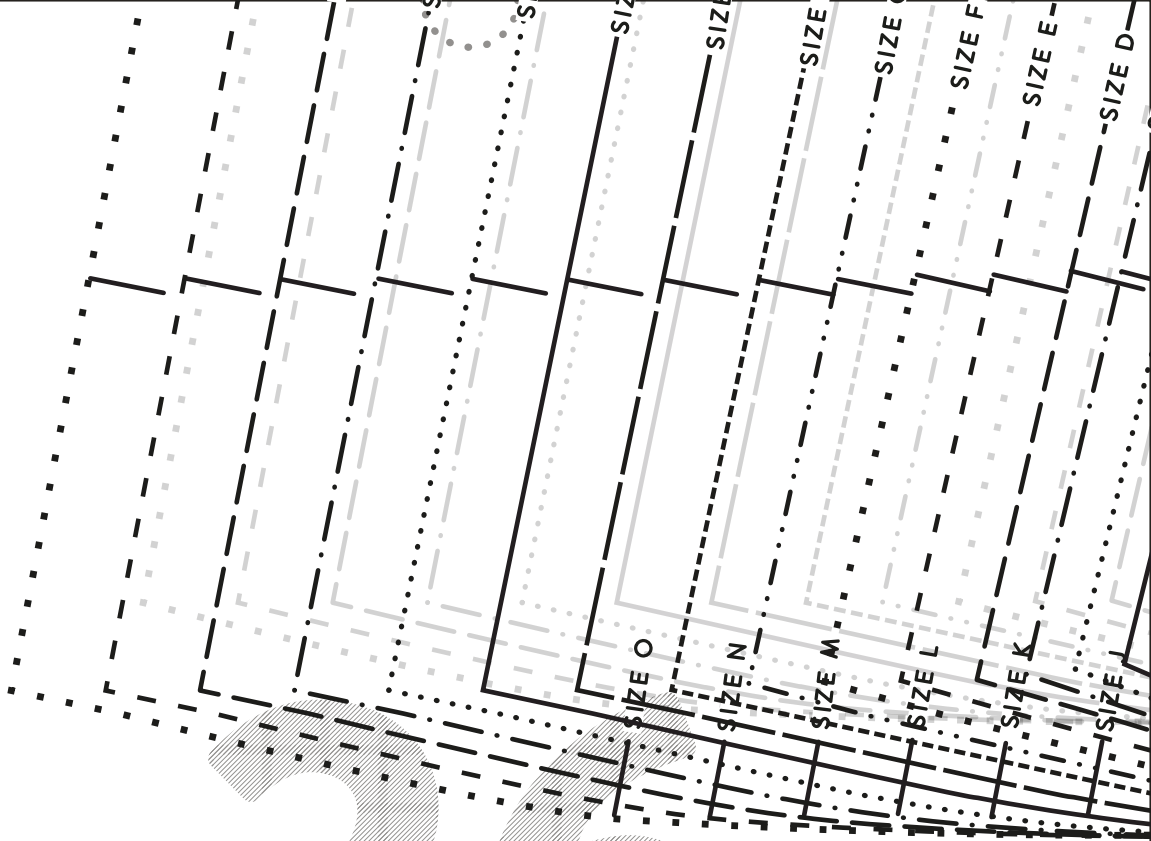




LA  
**ROBE COVE**

/ HAUTDEVANT (VERSION MANCHE)

26



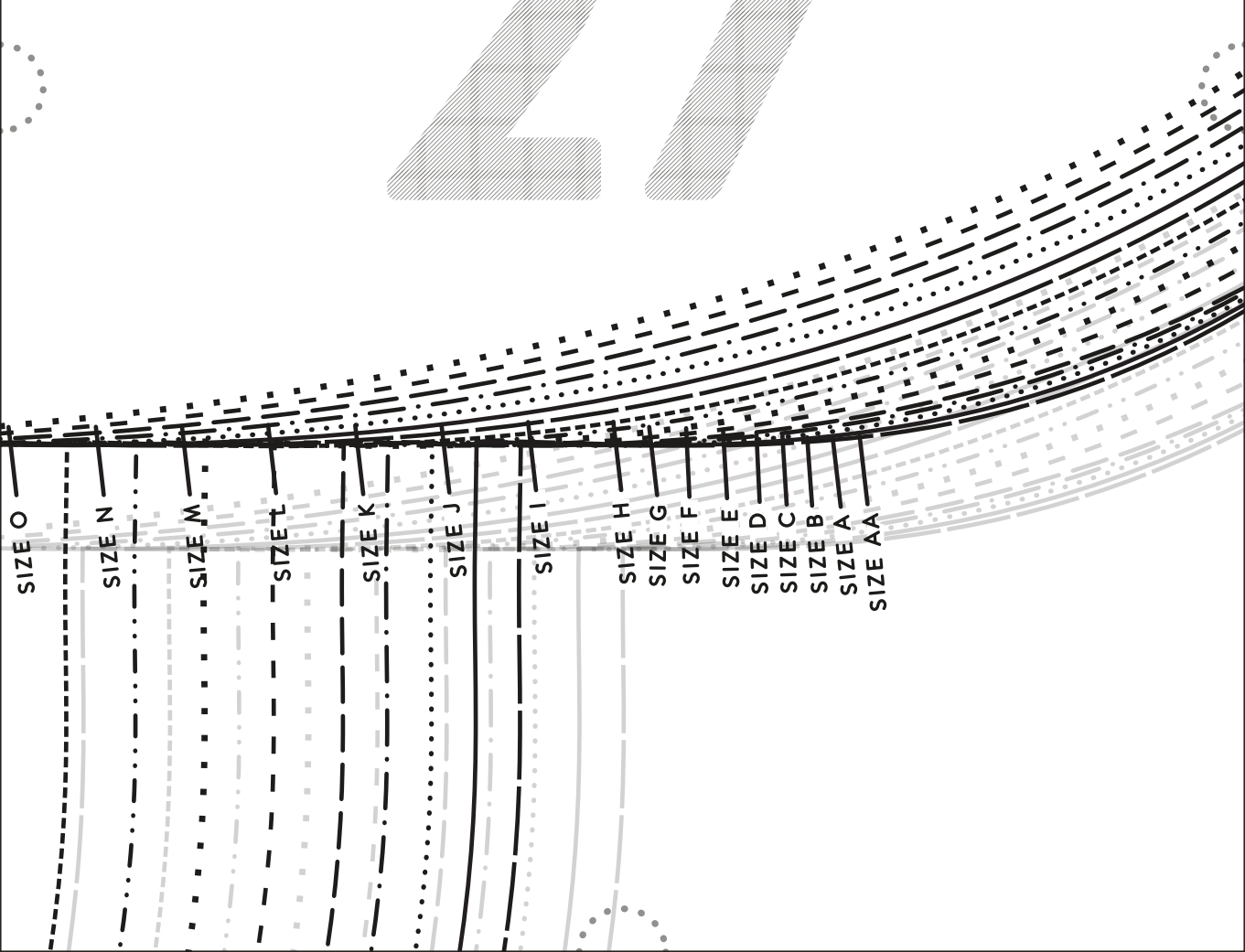
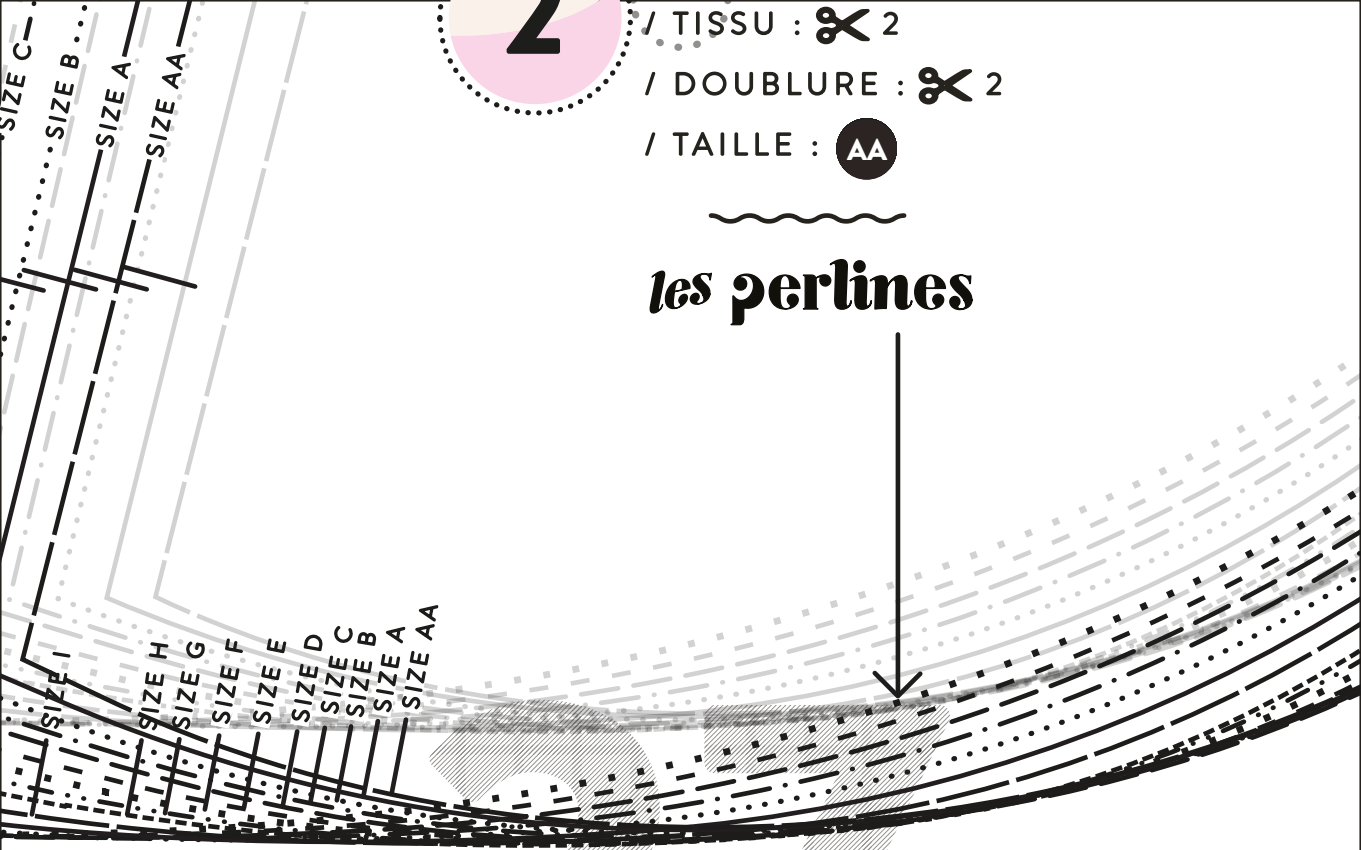
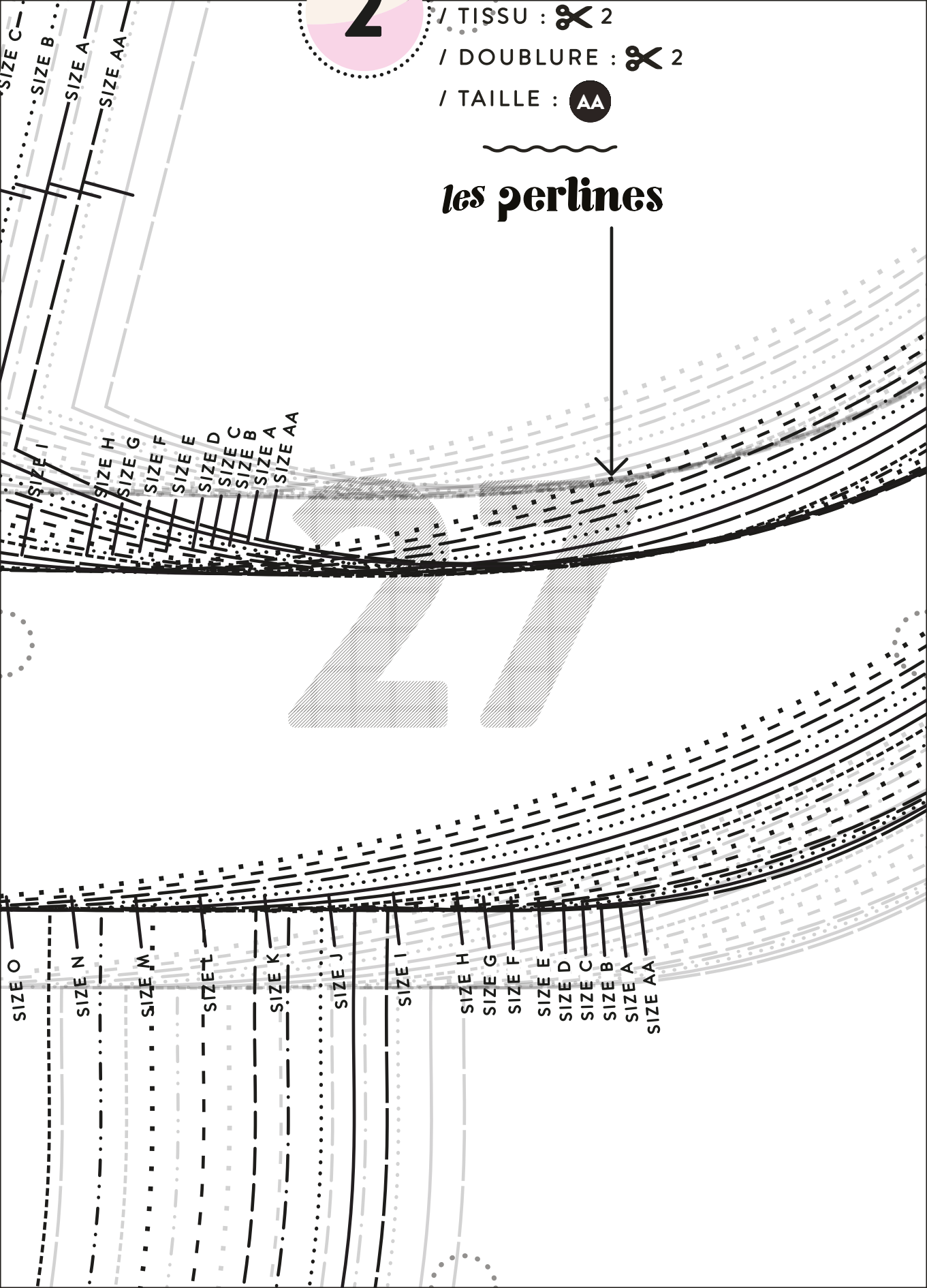


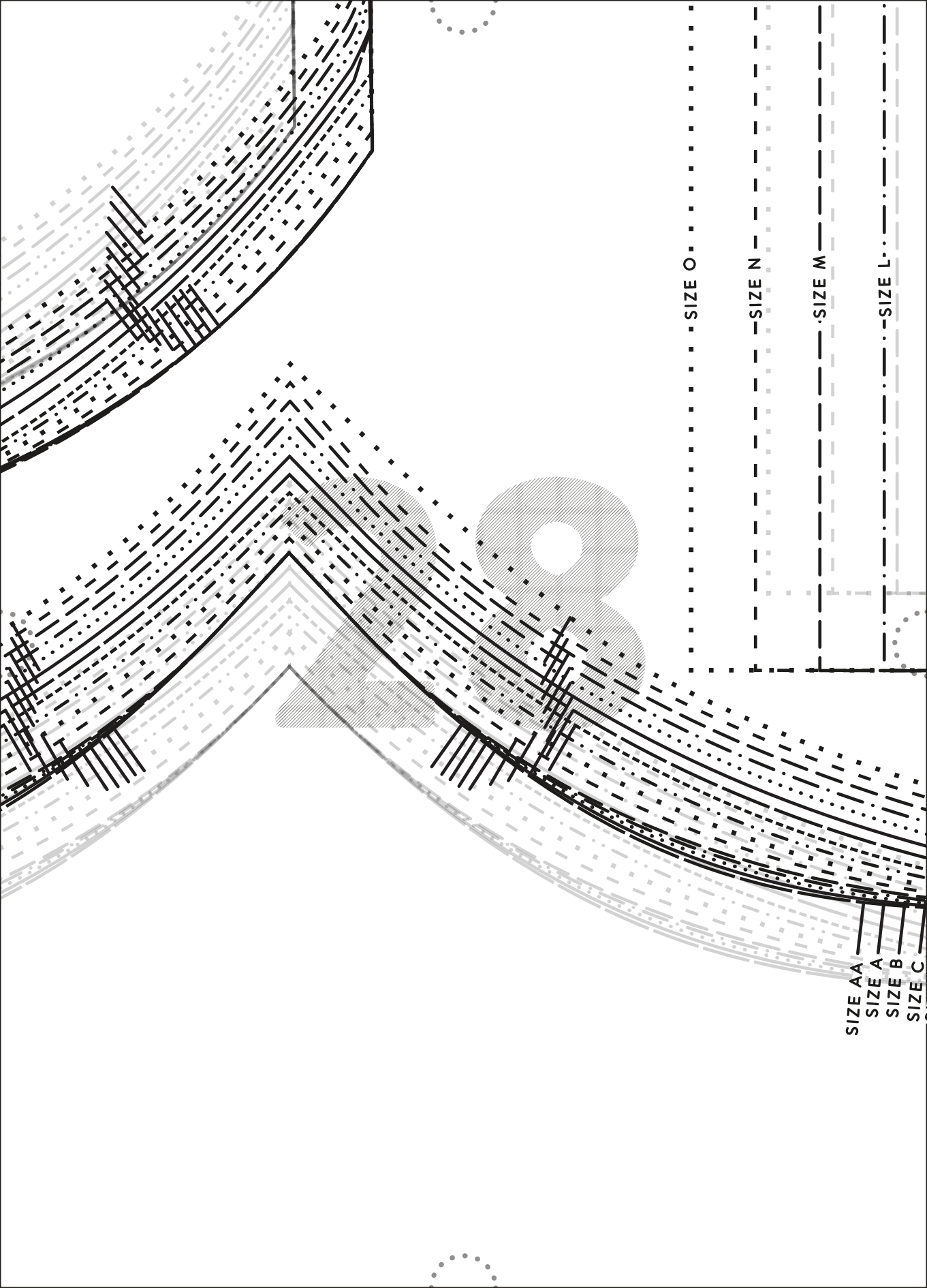
/ TISSU : ✂ 2

/ DOUBLURE : ✂ 2

/ TAILLE : AA

les perlines





SIZE O

SIZE N

SIZE M

SIZE L

SIZE AA

SIZE A

SIZE B

SIZE C



SIZE D  
SIZE E  
SIZE F  
SIZE G  
SIZE H

SIZE I

SIZE J

SIZE K

SIZE L

SIZE M

SIZE N

SIZE O

SIZE K

SIZE J

SIZE I

SIZE H

SIZE G

SIZE F

SIZE E

SIZE D

SIZE C

SIZE B

SIZE A

SIZE AA

SIZE O

SIZE N

SIZE M

SIZE L

SIZE K

SIZE J

SIZE I

SIZE H

SIZE G

SIZE F

SIZE E

SIZE D

SIZE C

SIZE B

SIZE A

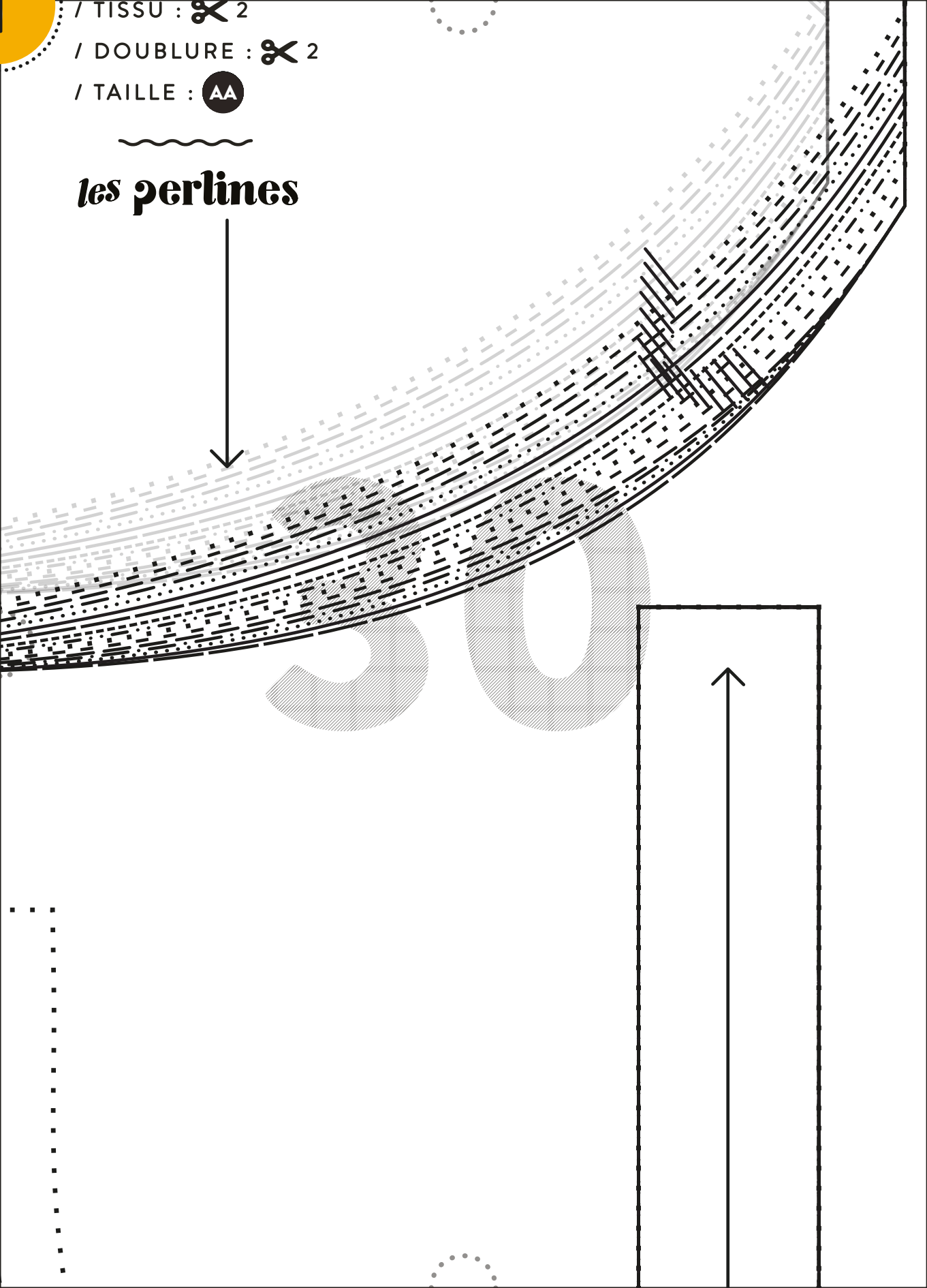
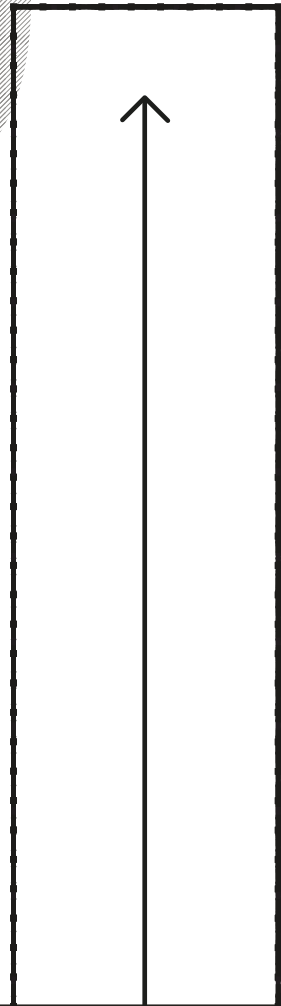
SIZE AA

/ TISSU : ✂ 2

/ DOUBLURE : ✂ 2

/ TAILLE : AA

~~~~~  
**les perlines**





SIZE O

SIZE N

SIZE M

SIZE L

SIZE K

SIZE J

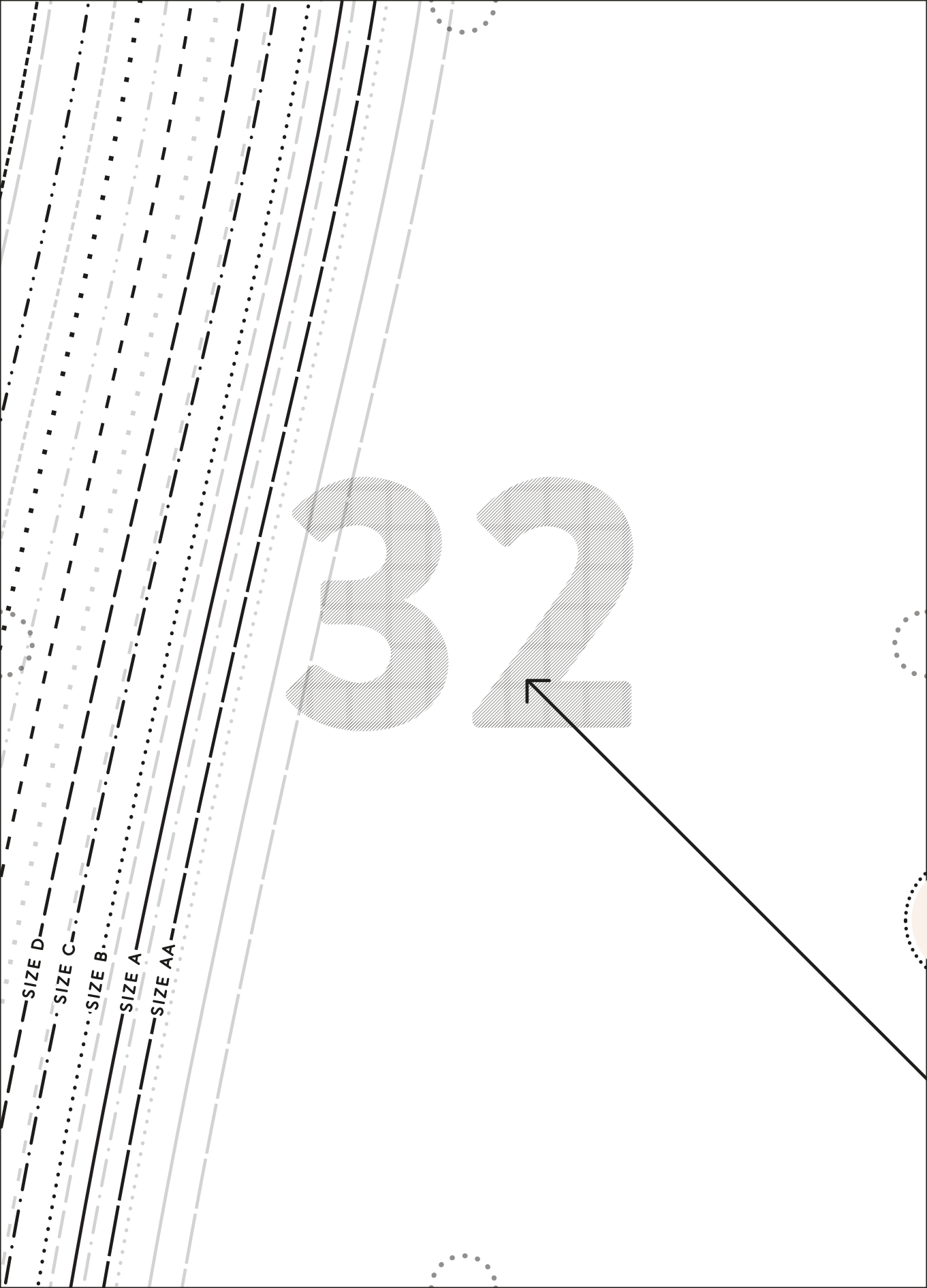
SIZE I

SIZE H

SIZE G

SIZE F

SIZE E



—SIZE D—

·SIZE C·

·SIZE B·

—SIZE A—

—SIZE AA—

3 2



33

LA  
**ROBE COVE**

/ JUPE DEVANT

/ TISSU : ✂ 1 SUR LE BIAIS

/ TAILLE : AA



*les perlines*

5

34

35

7E  
S






36



37

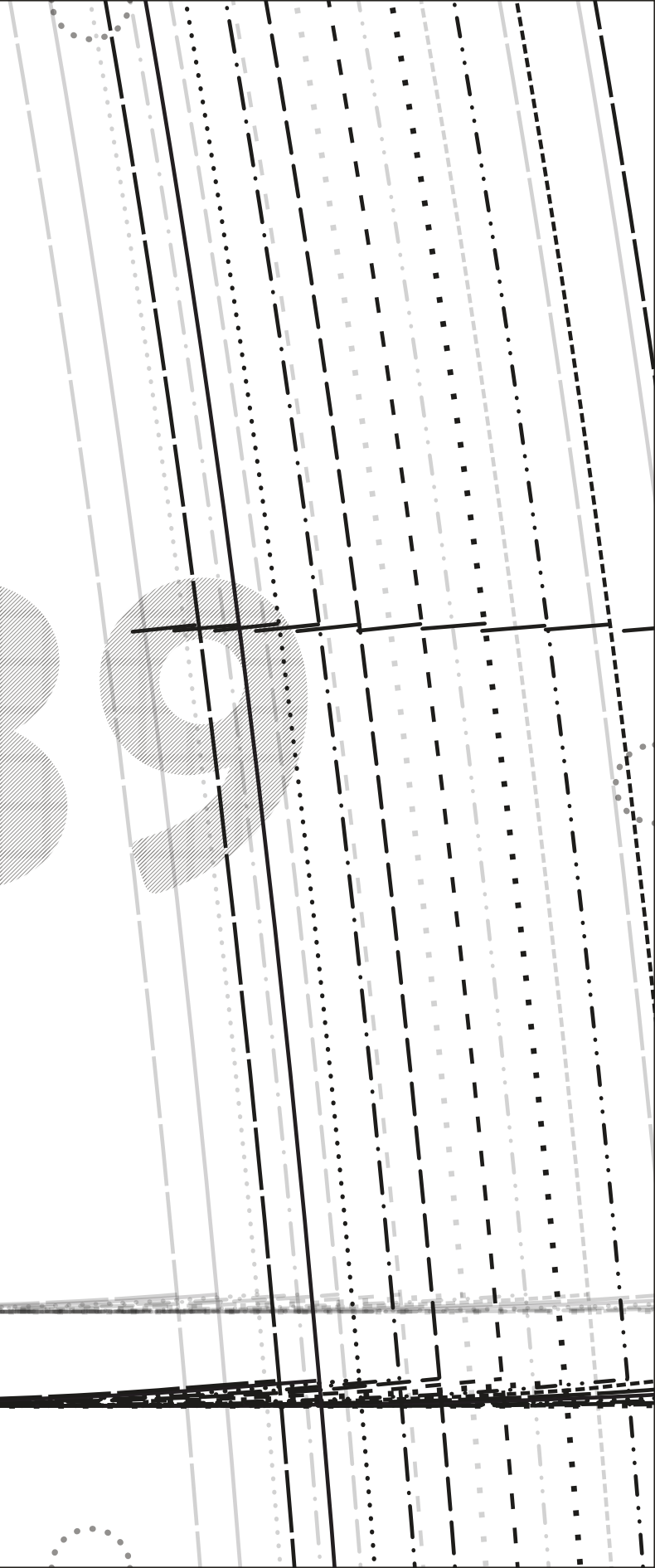


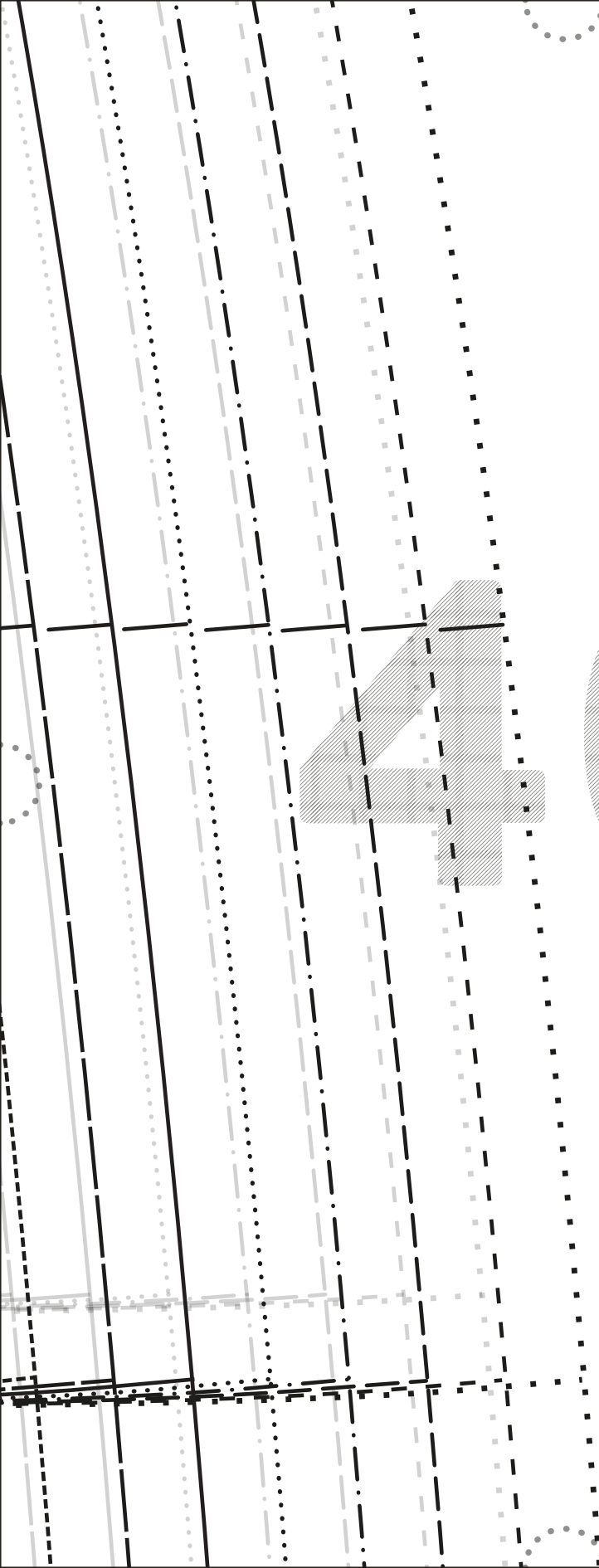


38

COUPER ICI POUR LA VERSION COURTE

39





40



/ ATTACHE DOS (VERSION MANCHE)

/ TISSU :  2

/ TAILLE : TOUTES TAILLES

LA  
**ROBE COU**  
*les perline*

44

42

43

SIZE F

SIZE E

SIZE D

SIZE C

SIZE B

SIZE A

SIZE AA

44



SIZE O

SIZE N

SIZE M

SIZE L

SIZE K

SIZE J

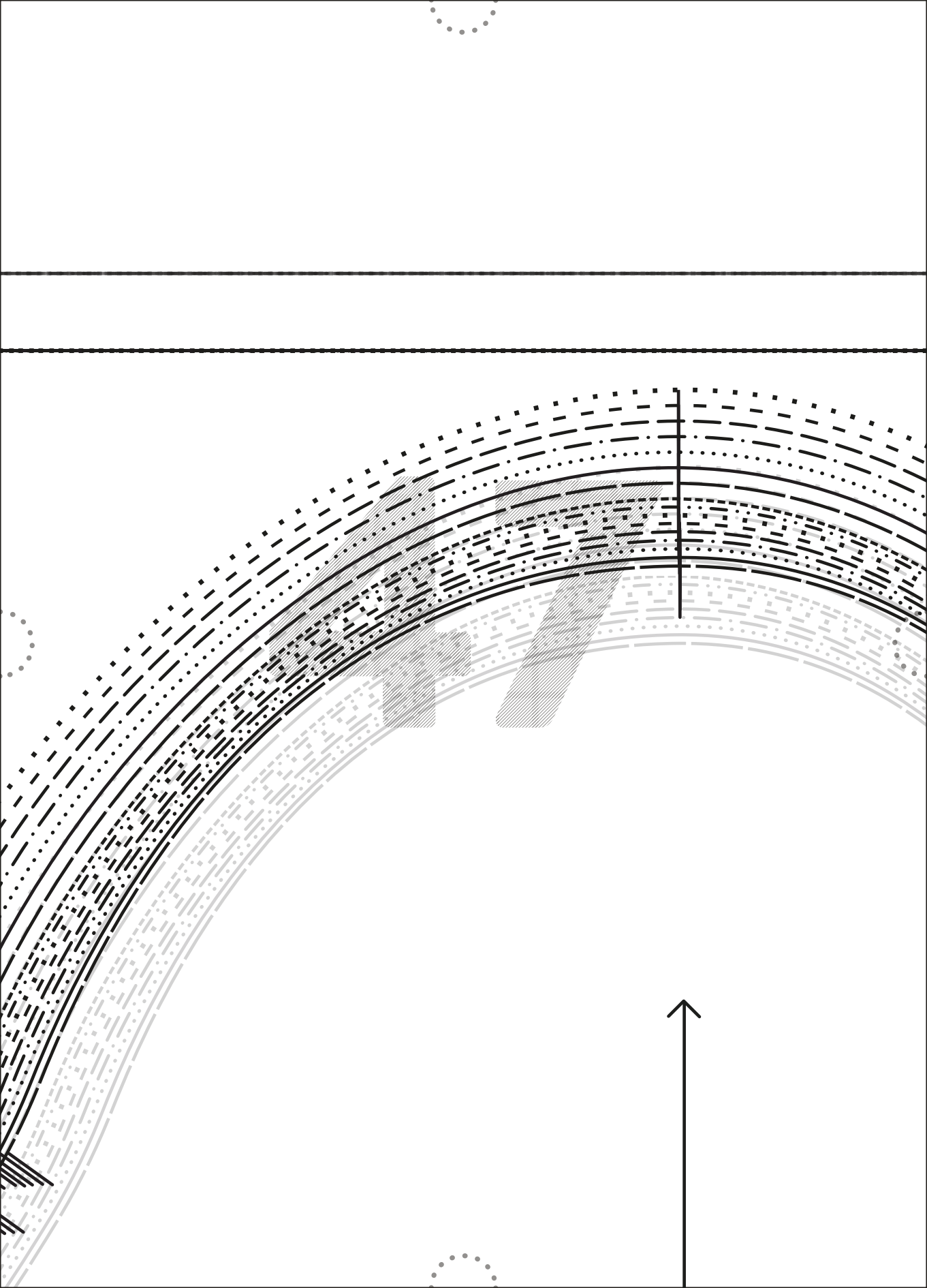
SIZE I

SIZE H

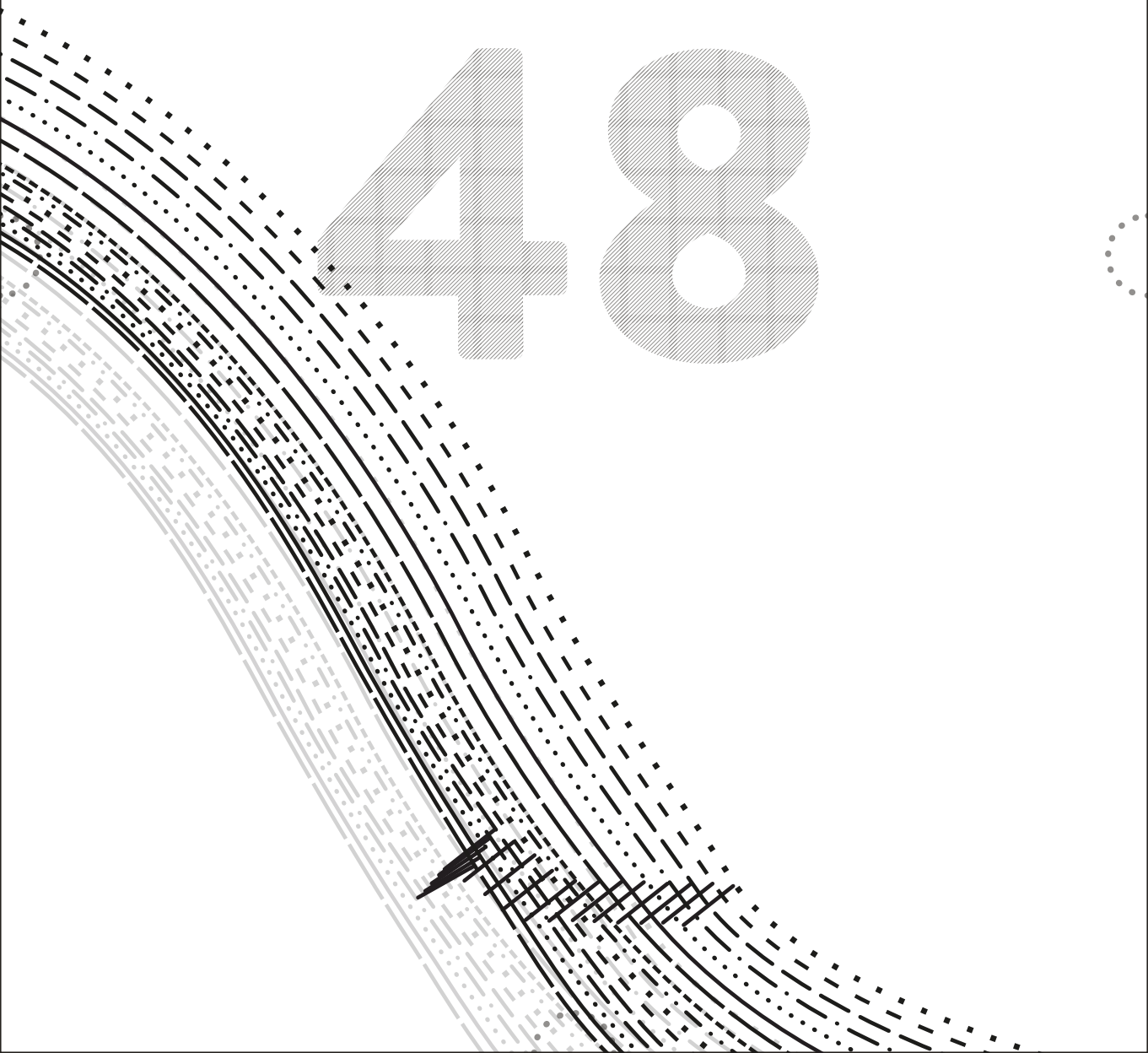
SIZE G

45

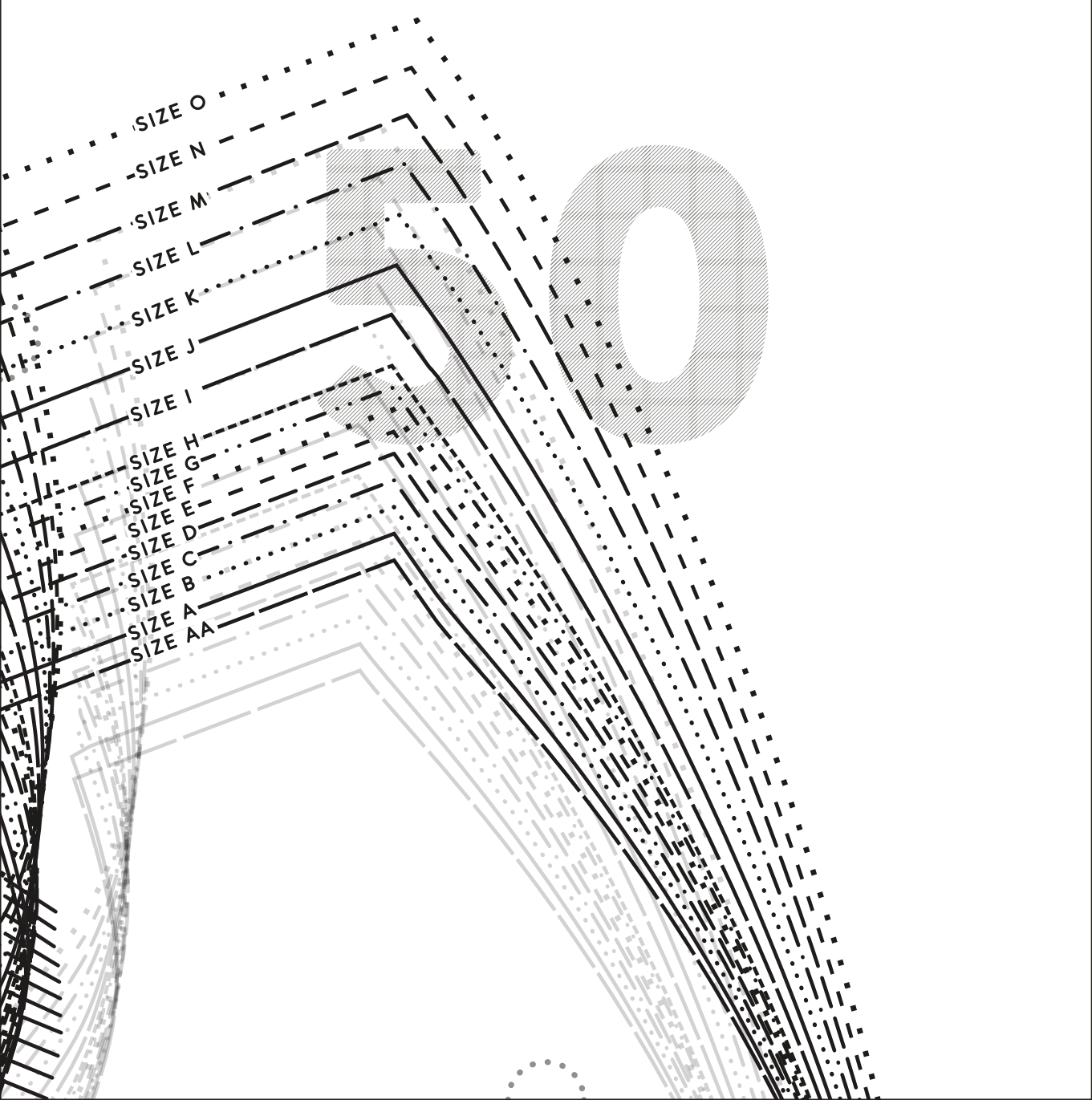
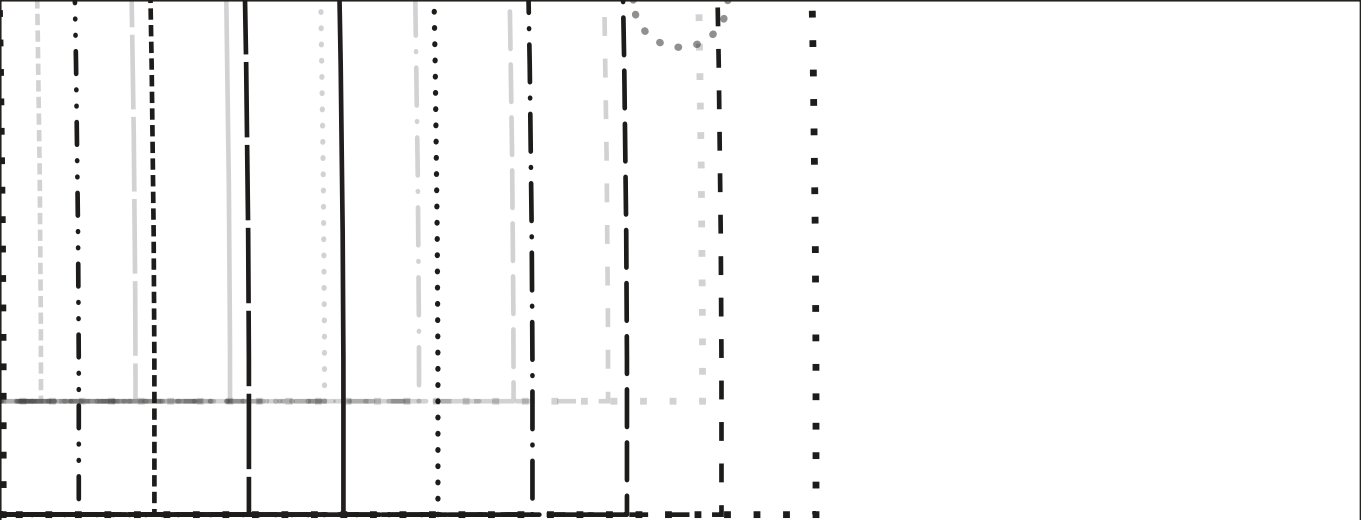
46



48



49



SIZE O

SIZE N

SIZE M

SIZE L

SIZE K

SIZE J

SIZE I

SIZE H

SIZE G

SIZE F

SIZE E

SIZE D

SIZE C

SIZE B

SIZE A

SIZE AA

10

54

11

SIZE O

SIZE N

SIZE M

SIZE L

SIZE K

SIZE J

SIZE I

SIZE H

SIZE G

SIZE F

SIZE E

SIZE D

SIZE C

SIZE B

SIZE A

SIZE AA

LA  
**ROBE COVE**

/ MANCHE LONGUE

/ VTISSU : ✂ 2

/ TAILLE : AA

*les perlines*

7



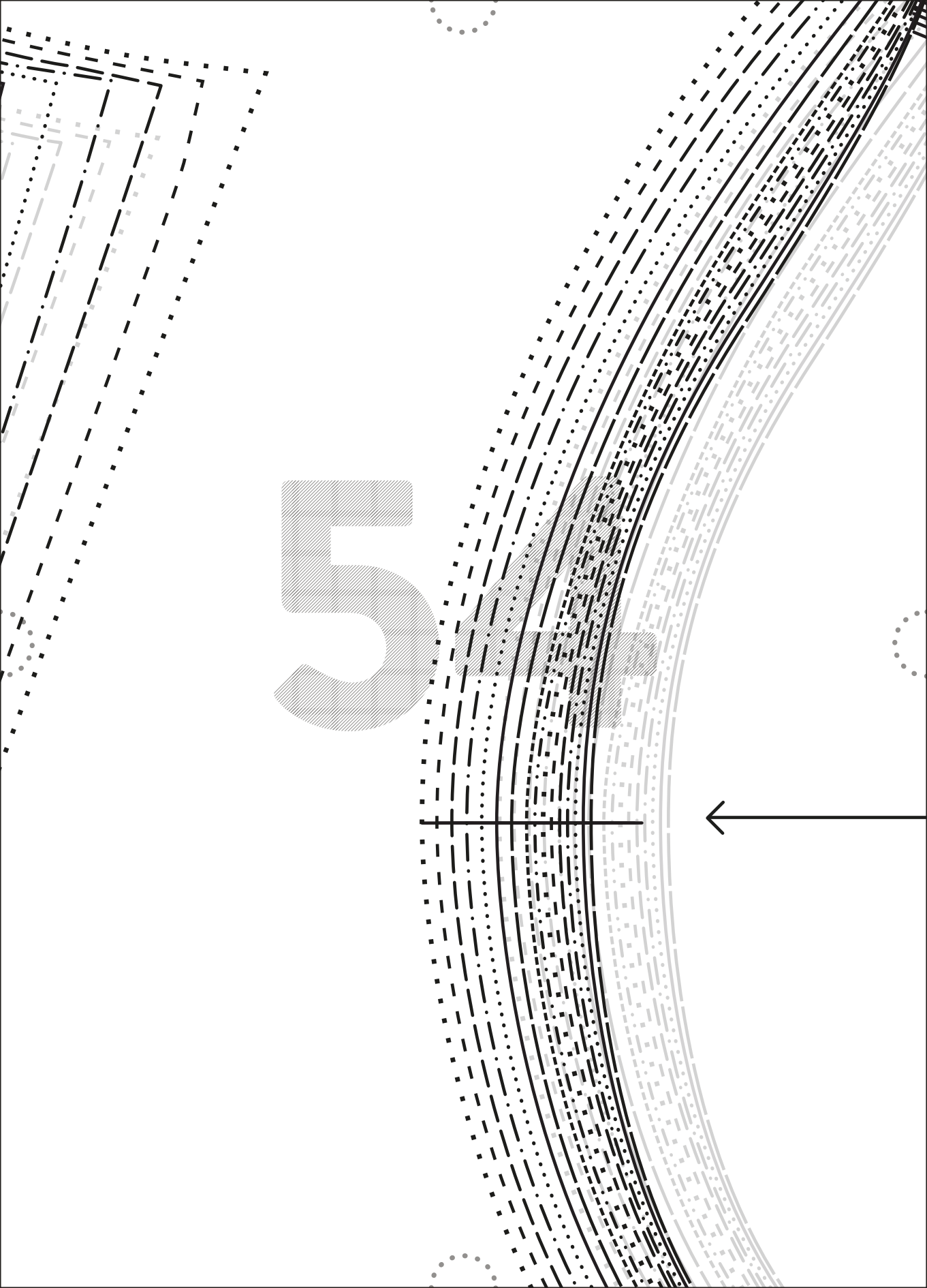


5

5

SIZE A  
SIZE B  
SIZE AA  
SIZE C  
SIZE D  
SIZE E  
SIZE F  
SIZE G  
SIZE H  
SIZE I  
SIZE J  
SIZE K  
SIZE L  
SIZE M  
SIZE N  
SIZE O

# 544



LA  
**ROBE COVE**

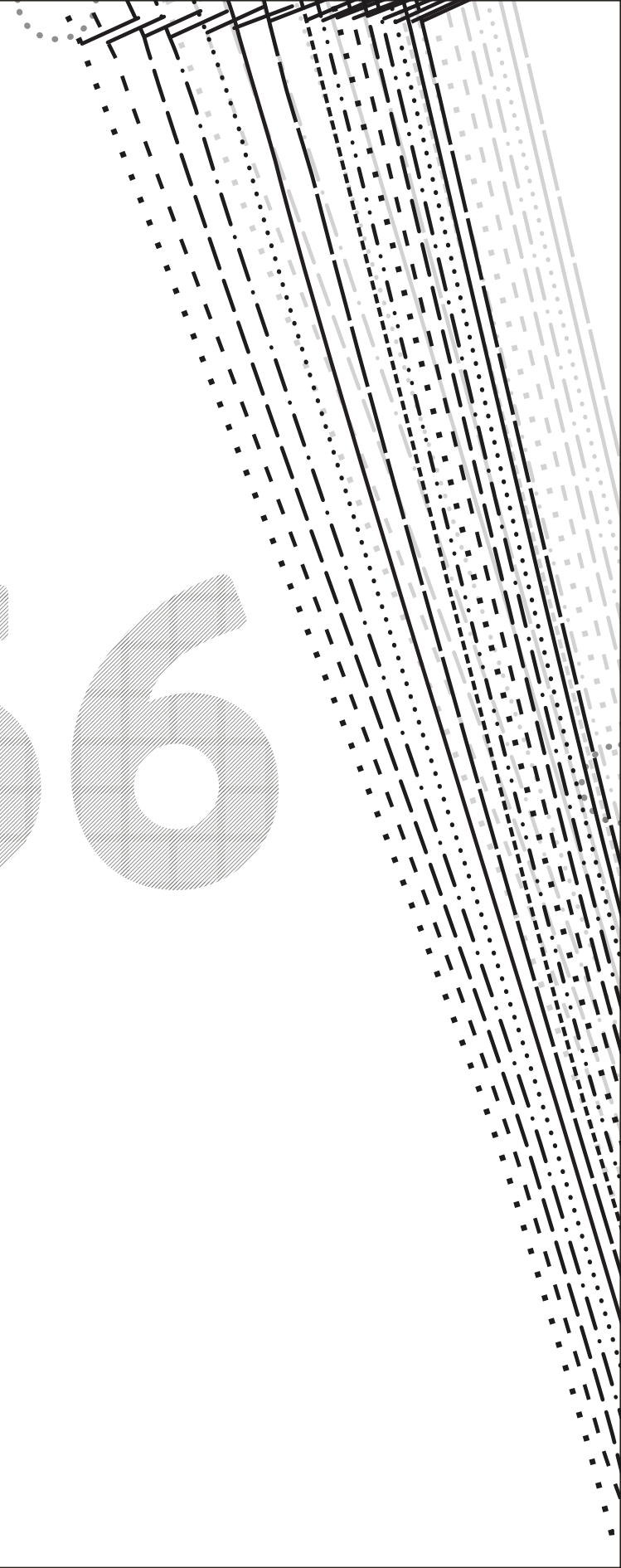
**8** / MANCHE COURTE  
/ TISSU :  2  
/ TAILLE : **AA**

55

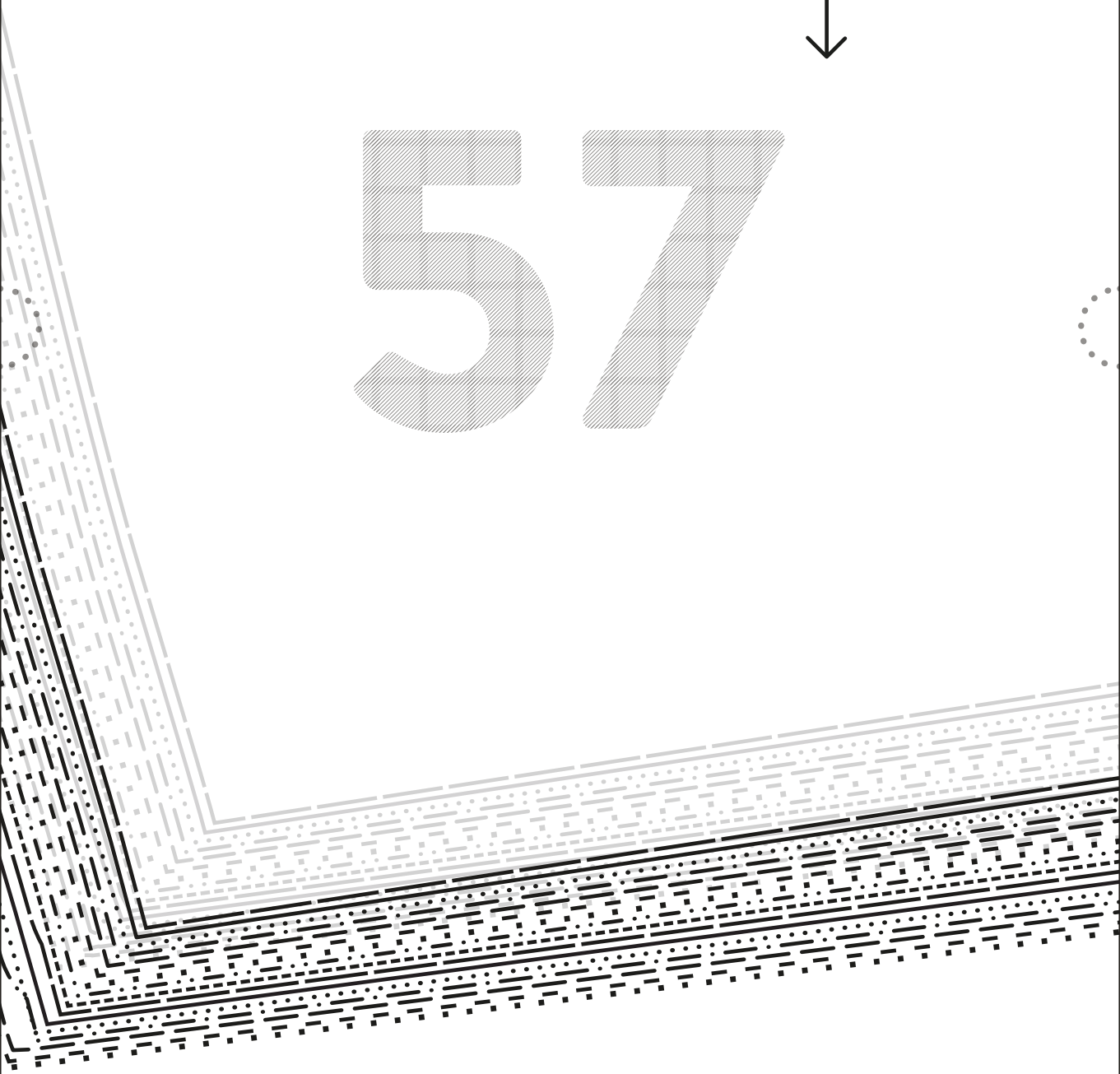
*les perlines*

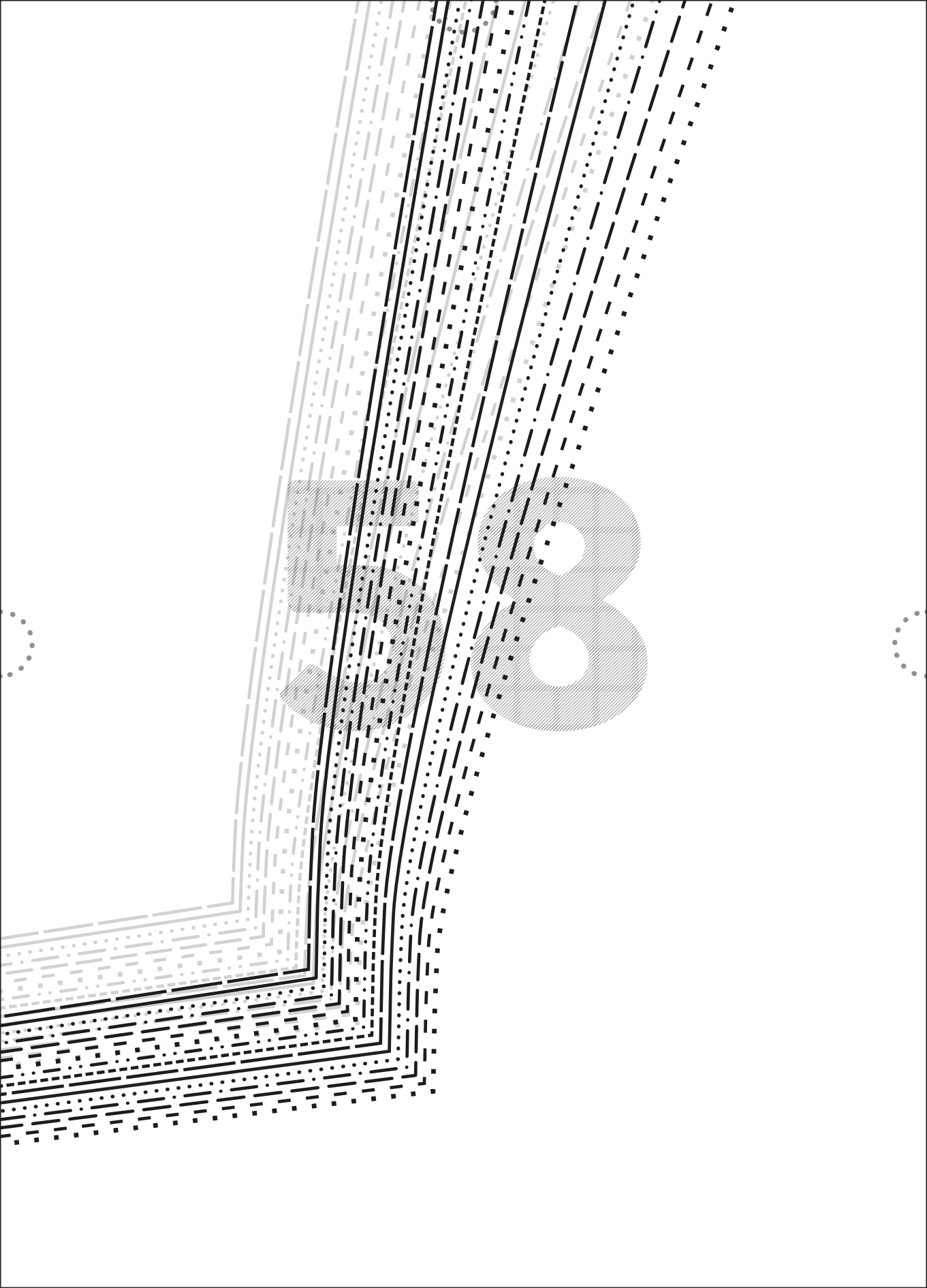


56



57





59

