

THE COVE SLIP DRESS



les perlines

/ SEWING LEVEL: CONFIDENT BEGINNER

/ UP TO A 140CM (55") BUST AND 153CM (60") HIP

/ LESPERLINES.COM

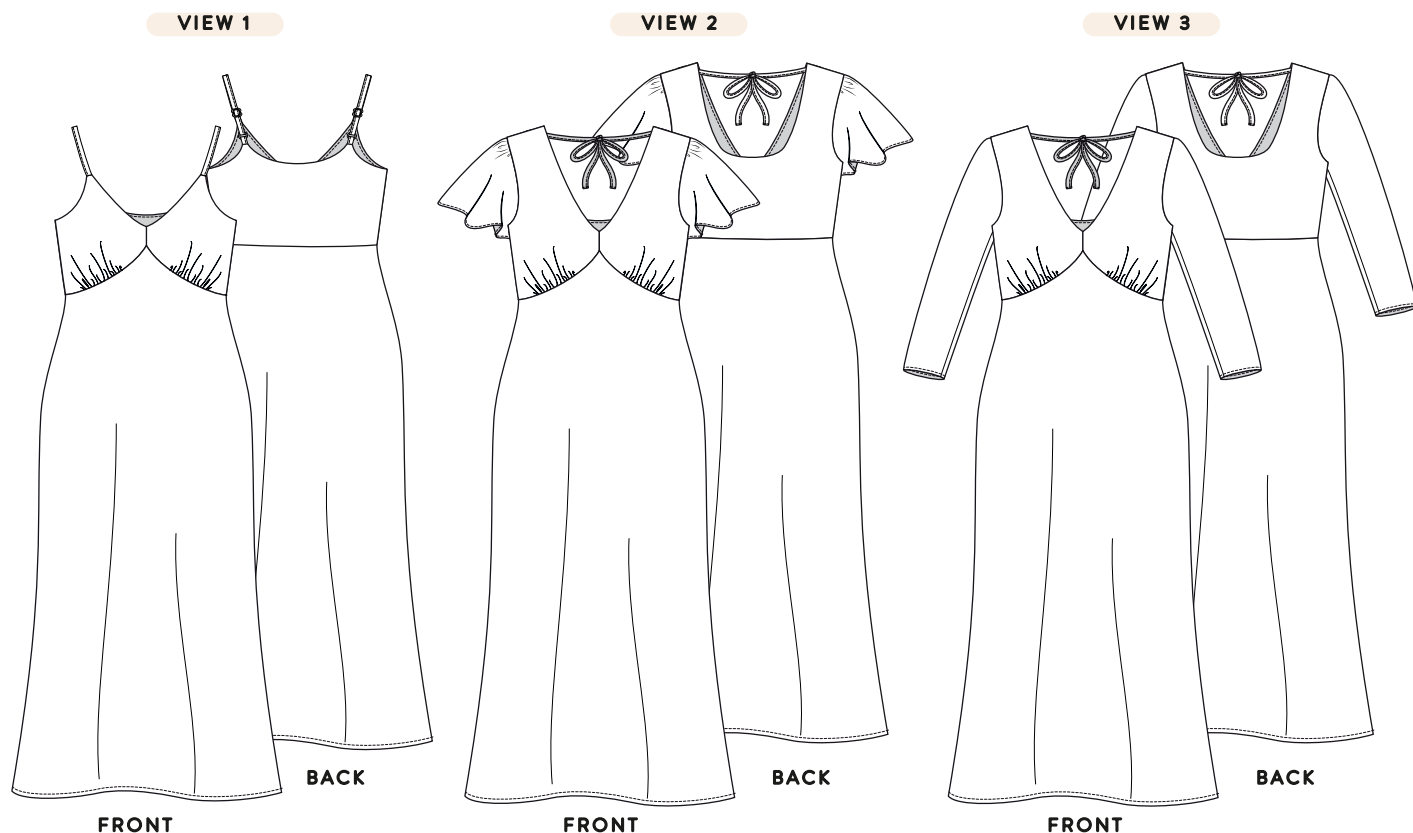
/ #COVESLIPDRESS

/ FOR PERSONAL USE ONLY

/ CRAFTED IN MONTREAL, CANADA

overview

/ GARMENT DETAILS, FABRIC SUGGESTIONS



GARMENT DETAILS

The Cove is THE ultimate slip dress pattern. The pattern comes with a sleeveless, short and long sleeve option, as well as 2 different lengths, making it a dress for every season! The V neckline was designed to be a bit more on the conservative side, so the dress is perfect for office wear and can be worn with a bra. The skirt is also cut on the bias, giving the dress a lot of drape and adding extra stretch for comfort.

FABRIC SUGGESTIONS

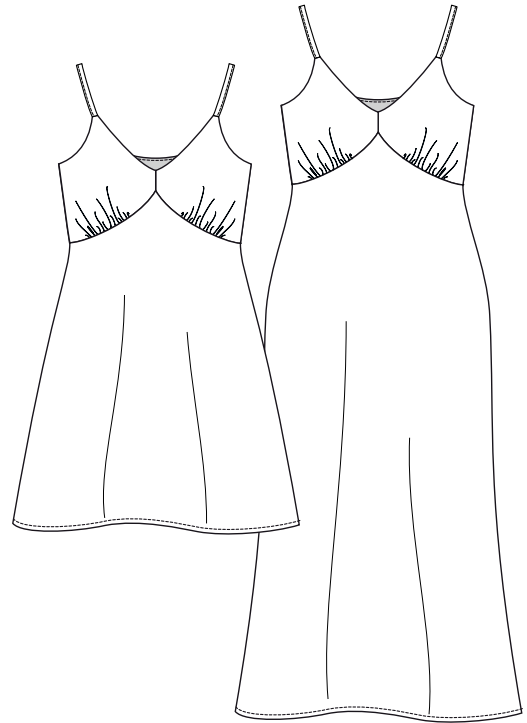
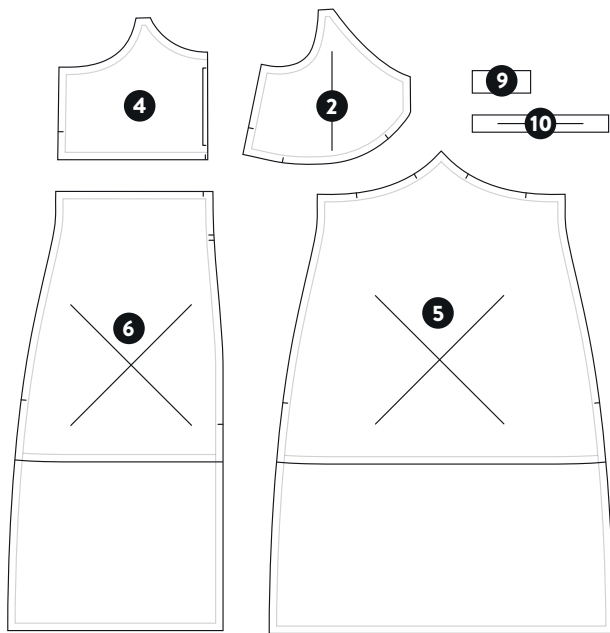
The Cove slip dress will work best with light weight woven fabrics that have a lot of drape such as silk, satin, rayon and viscose (crepe, voile, poplin, twill, challis).

SEWING LEVEL: CONFIDENT BEGINNER

pattern inventory

/ VIEW 1

VIEW 1
sleeveless



PATTERN PIECES

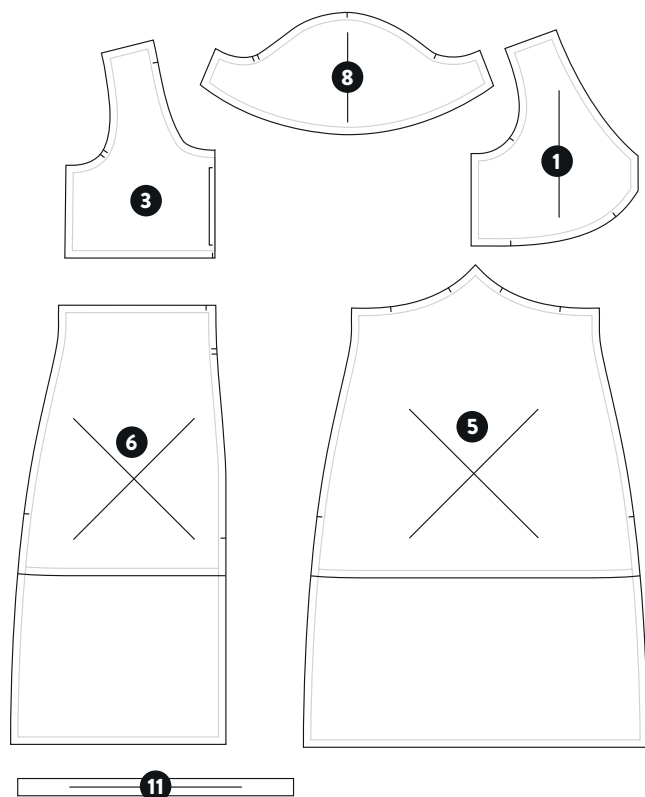
- 2 upper front (sleeveless version) 4 upper back (sleeveless version) 5 front skirt
6 back skirt 9 short strap 10 long strap (sleeveless version)

NOTIONS

- ✿ Main fabric (will be used as lining too)
- ✿ Sewing needle
- ✿ Sewing thread
- ✿ Set of 12mm (1/2") rings and sliders
- ✿ 2cm (3/4") wide interfacing strips (optional- used instead of staystitching)

pattern inventory

/ VIEW 2



VIEW 2
short sleeve



PATTERN PIECES

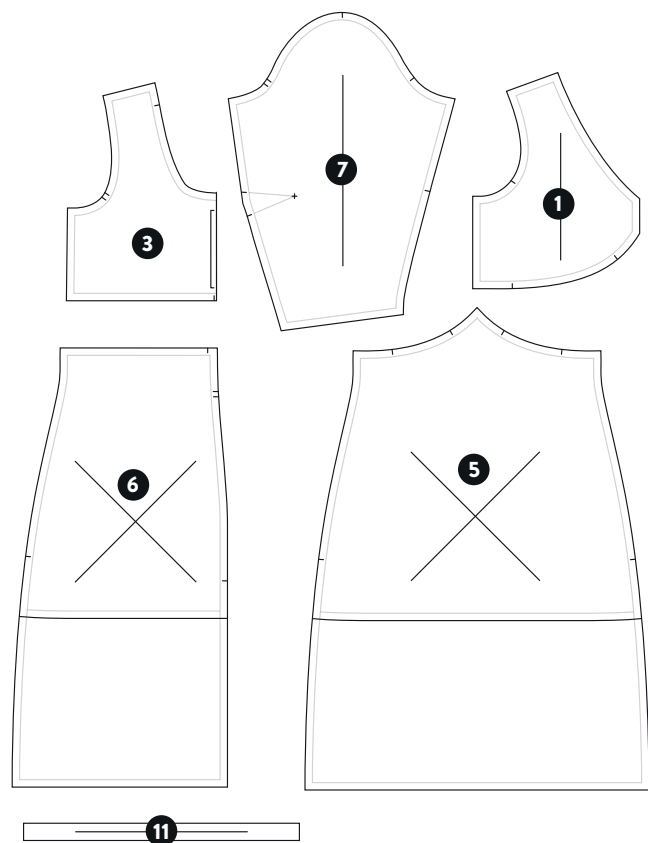
- 1 upper front (sleeve version)
- 3 upper back (sleeve version)
- 5 front skirt
- 6 back skirt
- 8 short sleeve
- 11 back ties (sleeve version)

NOTIONS

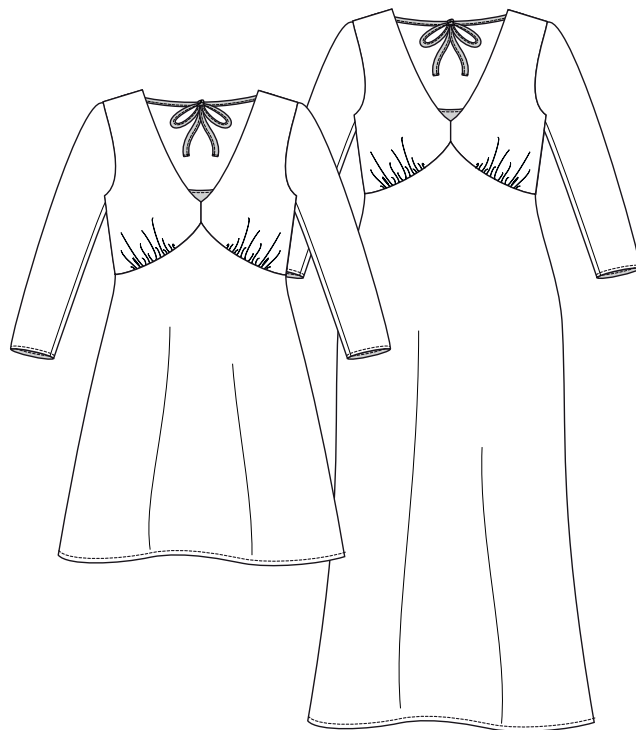
- ✿ Main fabric (will be used as lining too)
- ✿ Sewing needle
- ✿ Sewing thread
- ✿ 2cm (3/4") wide interfacing strips (optional- used instead of staystitching)

pattern inventory

/ VIEW 3



VIEW 3
long sleeve



PATTERN PIECES

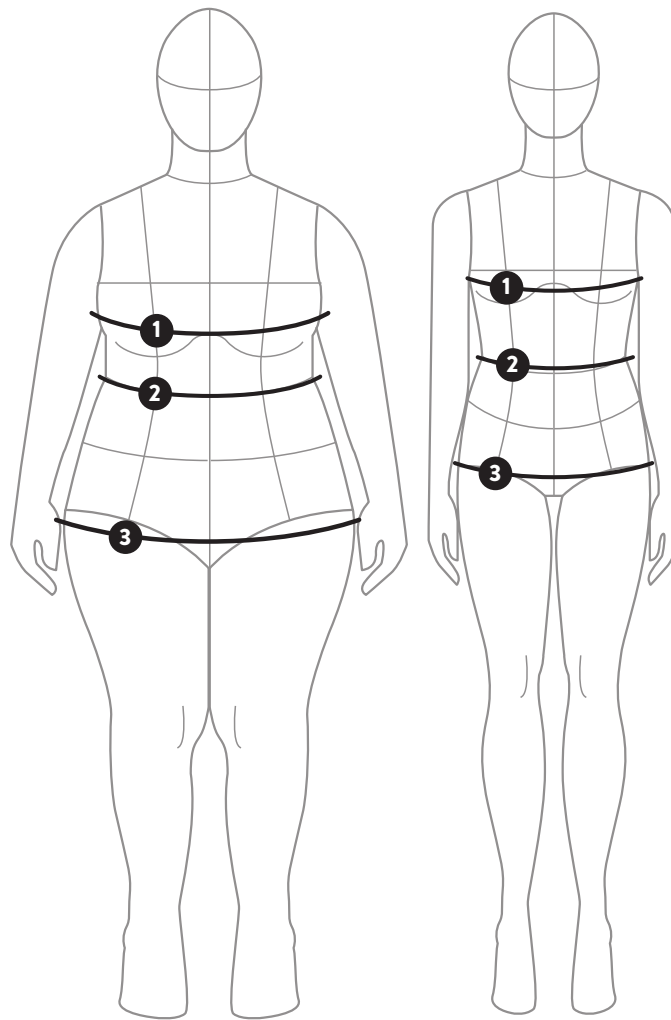
- 1 upper front (sleeve version)
- 3 upper back (sleeve version)
- 5 front skirt
- 6 back skirt
- 7 long sleeve
- 11 back ties (sleeve version)

NOTIONS

- ✿ Main fabric (will be used as lining too)
- ✿ Sewing needle
- ✿ Sewing thread
- ✿ 2cm (3/4") wide interfacing strips (optional- used instead of staystitching)

taking your measurements

/ BUST, WAIST AND HIPS



1 / BUST MEASUREMENT

Measure around the fullest part of the bust.

2 / WAIST MEASUREMENT

Measure the waist where your body naturally bends (you can bend side to side to determine where to measure). This measurement is usually slightly above the belly button.

3 / HIP MEASUREMENT

Measure around the widest part of the hips/buttocks. Make sure the measuring tape stays parallel to the floor.

sizing chart

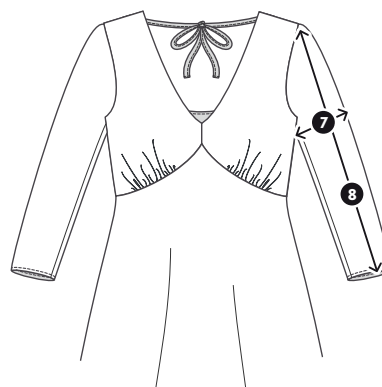
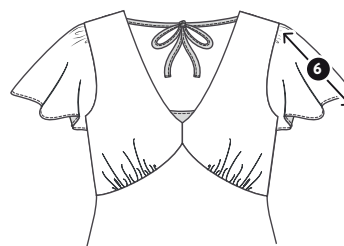
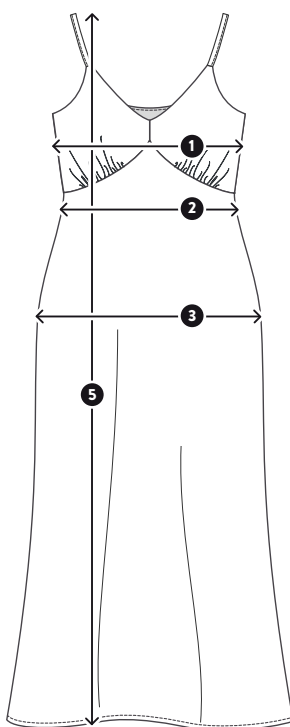
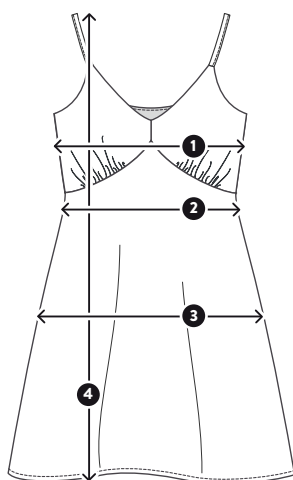
/ BODY MEASUREMENTS
/ FINISHED MEASUREMENTS

BODY MEASUREMENTS

	AA	A	B	C	D	E	F	G	H	I	J	K	L	M	N	O
BUST	78 cm 30 3/4"	80.5 cm 31 3/4"	83 cm 32 3/8"	85.5 cm 33 3/8"	88 cm 34 3/8"	92 cm 36 1/4"	96 cm 37 3/4"	100 cm 39 3/8"	105 cm 41 1/8"	110 cm 43 3/8"	115 cm 45 1/4"	120 cm 47 1/4"	125 cm 49 1/4"	130 cm 51 1/4"	135 cm 53 1/8"	140 cm 55 1/8"
WAIST	62 cm 24 3/8"	64.5 cm 25 3/8"	67 cm 26 3/8"	69.5 cm 27 3/8"	72 cm 28 3/8"	76 cm 30"	80 cm 31 1/2"	84 cm 33"	89 cm 35"	94 cm 37"	99 cm 39"	104 cm 41"	109 cm 43"	114 cm 44 1/8"	119 cm 46 1/8"	124 cm 48 3/8"
HIPS	91 cm 35 7/8"	93.5 cm 36 7/8"	96 cm 37 3/4"	98.5 cm 38 5/8"	101 cm 39 3/4"	105 cm 41 1/8"	109 cm 43"	113 cm 44 1/2"	118 cm 46 1/2"	123 cm 48 1/2"	128 cm 50 3/8"	133 cm 52 1/8"	138 cm 54 1/8"	143 cm 56 1/8"	148 cm 58 1/4"	153 cm 60 1/4"

FINISHED MEASUREMENTS

	AA	A	B	C	D	E	F	G	H	I	J	K	L	M	N	O
1 BUST (ALL VIEWS)	83 cm 32 3/4"	86 cm 33 3/8"	88 cm 34 3/8"	90.5 cm 35 3/8"	93.5 cm 37 3/4"	97 cm 38 1/8"	101 cm 39 3/4"	105 cm 41 3/8"	109 cm 42 7/8"	114.5 cm 45"	119 cm 46 7/8"	124.5 cm 49"	129.5 cm 51"	134.5 cm 53"	139 cm 54 3/4"	144 cm 56 3/4"
2 WAIST (ALL VIEWS)	69.5 cm 27 3/8"	72 cm 28 3/8"	74.7 cm 29 3/8"	77.2 cm 30 3/8"	80 cm 31 1/2"	84 cm 33"	88 cm 34 1/8"	92 cm 36 1/4"	96 cm 37 3/4"	101 cm 39 3/4"	106 cm 41 3/4"	111 cm 43 3/8"	116 cm 45 3/8"	121 cm 47 3/8"	126 cm 49 3/8"	131 cm 51 3/8"
3 HIPS (ALL VIEWS)	95.7 cm 37 3/4"	98.5 cm 38 3/4"	100.7 cm 39 3/8"	103.5 cm 40 3/4"	106 cm 41 1/4"	110 cm 43 1/4"	114 cm 44 3/8"	118 cm 46 1/8"	122 cm 48"	127 cm 50"	132 cm 52"	137 cm 54"	142 cm 55 5/8"	147 cm 57 1/8"	152 cm 59 1/8"	157 cm 61 1/8"
4 LENGTH SHORT DRESS	84.7 cm 33 3/8"	86.5 cm 34"	87.2 cm 34 1/8"	88 cm 34 3/8"	88.5 cm 34 3/4"	89.2 cm 35 1/8"	90.2 cm 35 3/8"	91.2 cm 35 3/4"	92.2 cm 36 1/4"	93 cm 36 3/8"	94.5 cm 37 1/4"	94.5 cm 37 1/4"	95.5 cm 37 3/8"	96.2 cm 37 3/8"	97 cm 38 3/8"	98 cm 38 3/8"
5 LENGTH LONG DRESS	120 cm 47 1/4"	121 cm 47 3/4"	121.5 cm 47 3/8"	122 cm 48"	123 cm 48 3/8"	124 cm 48 3/4"	125 cm 49 1/4"	125.5 cm 49 1/2"	126.5 cm 49 3/4"	127.5 cm 50 1/4"	128.5 cm 50 3/4"	129.5 cm 51"	130 cm 51 1/8"	130.5 cm 51 1/4"	131.5 cm 51 3/4"	132.5 cm 52 1/4"
6 LENGTH SHORT SLEEVE	20 cm 7 7/8"	20 cm 7 7/8"	20.2 cm 8"	20.5 cm 8 1/8"	20.5 cm 8 1/8"	20.5 cm 8 1/8"	20.5 cm 8 1/8"	21 cm 8 1/4"	21.2 cm 8 3/8"	21.5 cm 8 1/2"	21.5 cm 8 1/2"	22 cm 8 3/8"	22.5 cm 8 7/8"	22.5 cm 8 7/8"	23 cm 9"	23.5 cm 9 1/4"
7 BICEP (LONG SLEEVE)	30.5 cm 12"	31 cm 12 1/4"	31.5 cm 12 3/8"	32 cm 12 1/2"	32.5 cm 12 3/4"	33 cm 13"	34 cm 13 1/4"	35 cm 13 3/4"	36 cm 14 1/4"	37.5 cm 14 3/4"	39.2 cm 15 3/8"	41 cm 16 1/8"	42.5 cm 16 3/4"	44 cm 17 1/4"	45.7 cm 18"	47.2 cm 18 3/4"
8 LENGTH LONG SLEEVE	56.5 cm 22 1/4"	56.7 cm 22 3/8"	57 cm 22 1/2"	57.5 cm 22 3/4"	57.7 cm 22 3/4"	58 cm 22 3/8"	58.5 cm 23"	58.7 cm 23 1/8"	59 cm 23 1/4"	59.5 cm 23 1/2"	60 cm 23 3/8"	60.5 cm 23 3/4"	60.7 cm 23 3/8"	61.2 cm 24 1/8"	61.7 cm 24 1/4"	62.2 cm 24 1/2"



fabric requirements



FABRIC REQUIREMENTS

VIEW 1 - SHORT DRESS

	AA	A	B	C	D	E	F	G	H	I	J	K	L	M	N	O
152 cm / 60"	1.5m 1.6 yds	1.5m 1.6 yds	1.5m 1.6 yds	1.5m 1.6 yds	1.5m 1.6 yds	1.5m 1.6 yds	1.8m 2 yds	1.8m 2 yds	1.8m 2 yds	1.8m 2 yds	1.8m 2 yds	2m 2.2 yds	2m 2.2 yds	2m 2.2 yds	2m 2.2 yds	2m 2.2 yds
114 cm / 45"	2m 2.2 yds	2m 2.2 yds	2m 2.2 yds	2m 2.2 yds	2m 2.2 yds	2m 2.2 yds	2.3m 2.5 yds	2.3m 2.5 yds	2.3m 2.5 yds	2.3m 2.5 yds	2.3m 2.5 yds	2.8m 3 yds	2.8m 3 yds	2.8m 3 yds	2.8m 3 yds	2.8m 3 yds

VIEW 1 - LONG DRESS

	AA	A	B	C	D	E	F	G	H	I	J	K	L	M	N	O
152 cm / 60"	2m 2.2 yds	2m 2.2 yds	2m 2.2 yds	2m 2.2 yds	2m 2.2 yds	2m 2.2 yds	2.9m 3.2 yds	2.9m 3.2 yds	2.9m 3.2 yds	2.9m 3.2 yds	2.9m 3.2 yds	2.9m 3.2 yds	2.9m 3.2 yds	2.9m 3.2 yds	2.9m 3.2 yds	2.9m 3.2 yds
114 cm / 45"	2.5m 2.7 yds	2.5m 2.7 yds	2.5m 2.7 yds	2.5m 2.7 yds	2.5m 2.7 yds	2.5m 2.7 yds	3m 3.3 yds	3m 3.3 yds	3m 3.3 yds	3m 3.3 yds	3m 3.3 yds	3.5m 3.8 yds	3.5m 3.8 yds	3.5m 3.8 yds	3.5m 3.8 yds	3.5m 3.8 yds

VIEW 2 - SHORT DRESS

	AA	A	B	C	D	E	F	G	H	I	J	K	L	M	N	O
152 cm / 60"	2m 2.2 yds	2m 2.2 yds	2m 2.2 yds	2m 2.2 yds	2m 2.2 yds	2m 2.2 yds	2.5m 2.7 yds	2.5m 2.7 yds	2.5m 2.7 yds	2.5m 2.7 yds	2.5m 2.7 yds	3m 3.3 yds	3m 3.3 yds	3m 3.3 yds	3m 3.3 yds	3m 3.3 yds
114 cm / 45"	2.5m 2.7 yds	2.5m 2.7 yds	2.5m 2.7 yds	2.5m 2.7 yds	2.5m 2.7 yds	2.5m 2.7 yds	3.1m 3.4 yds	3.1m 3.4 yds	3.1m 3.4 yds	3.1m 3.4 yds	3.1m 3.4 yds	3.7m 4 yds	3.7m 4 yds	3.7m 4 yds	3.7m 4 yds	3.7m 4 yds

VIEW 2 - LONG DRESS

	AA	A	B	C	D	E	F	G	H	I	J	K	L	M	N	O
152 cm / 60"	2.5m 2.7 yds	2.5m 2.7 yds	2.5m 2.7 yds	2.5m 2.7 yds	2.5m 2.7 yds	2.5m 2.7 yds	3.1m 3.4 yds	3.1m 3.4 yds	3.1m 3.4 yds	3.1m 3.4 yds	3.1m 3.4 yds	3.4m 3.7 yds	3.4m 3.7 yds	3.4m 3.7 yds	3.4m 3.7 yds	3.4m 3.7 yds
114 cm / 45"	2.9m 3.2 yds	2.9m 3.2 yds	2.9m 3.2 yds	2.9m 3.2 yds	2.9m 3.2 yds	2.9m 3.2 yds	3.8m 4.1 yds	3.8m 4.1 yds	3.8m 4.1 yds	3.8m 4.1 yds	3.8m 4.1 yds	4.4m 4.8 yds	4.4m 4.8 yds	4.4m 4.8 yds	4.4m 4.8 yds	4.4m 4.8 yds

VIEW 3 - SHORT DRESS

	AA	A	B	C	D	E	F	G	H	I	J	K	L	M	N	O
152 cm / 60"	2.3m 2.5 yds	2.3m 2.5 yds	2.3m 2.5 yds	2.3m 2.5 yds	2.3m 2.5 yds	2.3m 2.5 yds	2.6m 2.8 yds	2.6m 2.8 yds	2.6m 2.8 yds	2.6m 2.8 yds	2.6m 2.8 yds	3m 3.3 yds	3m 3.3 yds	3m 3.3 yds	3m 3.3 yds	3m 3.3 yds
114 cm / 45"	2.8m 3 yds	2.8m 3 yds	2.8m 3 yds	2.8m 3 yds	2.8m 3 yds	2.8m 3 yds	3.4m 3.7 yds	3.4m 3.7 yds	3.4m 3.7 yds	3.4m 3.7 yds	3.4m 3.7 yds	4.1m 4.5 yds	4.1m 4.5 yds	4.1m 4.5 yds	4.1m 4.5 yds	4.1m 4.5 yds

VIEW 3 - LONG DRESS

	AA	A	B	C	D	E	F	G	H	I	J	K	L	M	N	O
152 cm / 60"	2.7m 2.9 yds	2.7m 2.9 yds	2.7m 2.9 yds	2.7m 2.9 yds	2.7m 2.9 yds	2.7m 2.9 yds	3.3m 3.6 yds	3.3m 3.6 yds	3.3m 3.6 yds	3.3m 3.6 yds	3.3m 3.6 yds	3.5m 3.8 yds	3.5m 3.8 yds	3.5m 3.8 yds	3.5m 3.8 yds	3.5m 3.8 yds
114 cm / 45"	3.2m 3.5 yds	3.2m 3.5 yds	3.2m 3.5 yds	3.2m 3.5 yds	3.2m 3.5 yds	3.2m 3.5 yds	4m 4.3 yds	4m 4.3 yds	4m 4.3 yds	4m 4.3 yds	4m 4.3 yds	4.5m 4.9 yds	4.5m 4.9 yds	4.5m 4.9 yds	4.5m 4.9 yds	4.5m 4.9 yds

printing the pattern

This pattern can be printed at home on US letter or A4 paper. You can also use the A0 file to get it printed at a printing business.

PRINT AT HOME :

If you print at home, start by opening the letter/A4 pattern file with Adobe Acrobat Reader (you can download it for free on Internet).

LAYERS :

This pattern has layers, which mean you can choose the size(s) you want to print. This makes the pattern lines easier to see and cut, and it saves ink!

When you open Adobe Acrobat Reader, there is a panel of options on the left-hand side. Once you click on the layer icon, you should see all layers. ❶

Click off the eye icon ❷ on the layers you want to hide, and only keep the eye icon on the size(s) you want to print. Make sure the text layer stays on. ❸

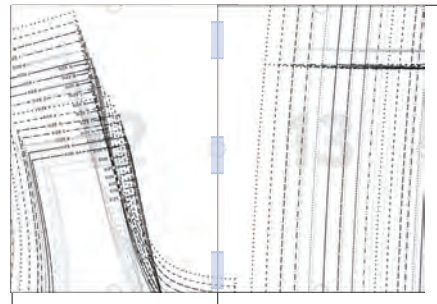
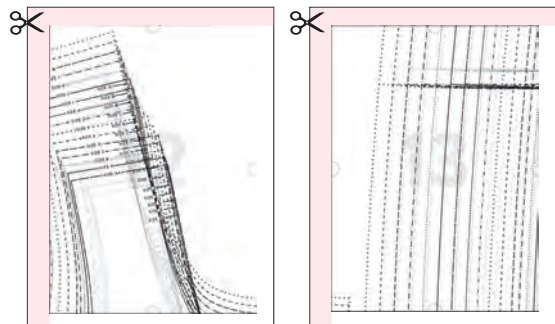
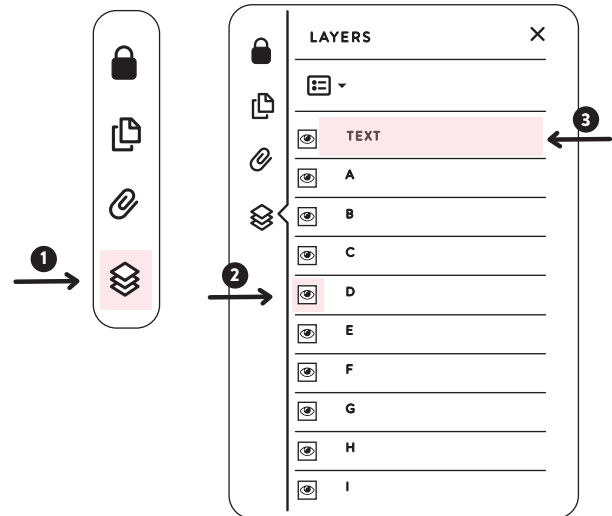
PRINTING / SCALING :

Once you are in the printing window, make sure the scaling option is off. Print the first page only and measure the test square to make sure the dimensions are correct.

If the dimensions of the test square are exact, print the rest of the pattern.

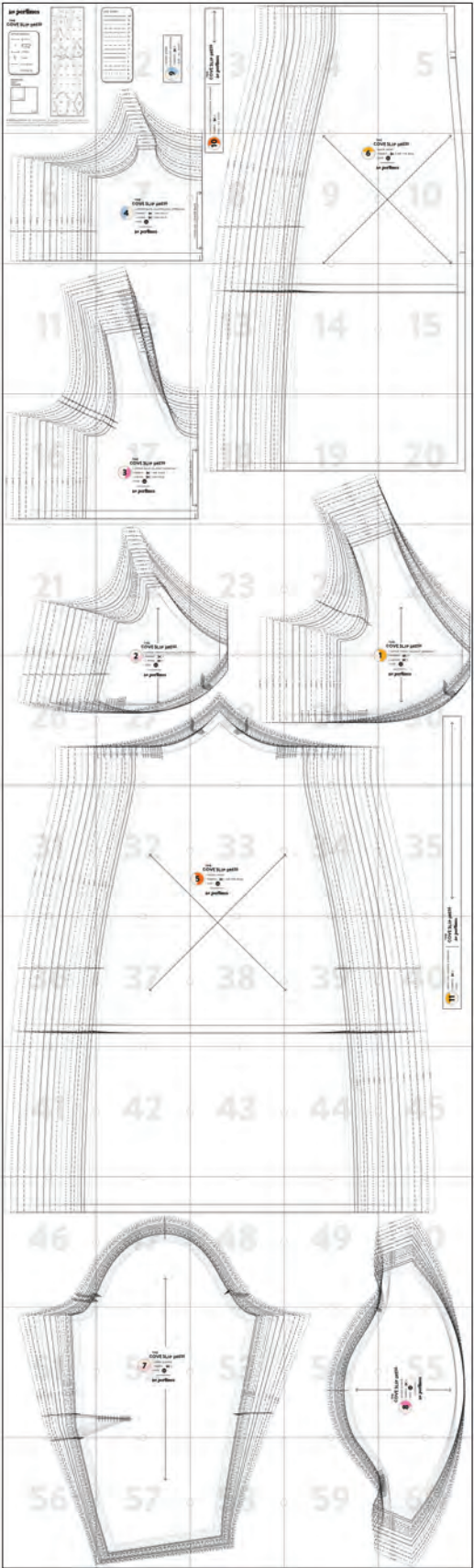
ASSEMBLING THE PATTERN :

To assemble the pattern, cut one vertical and one horizontal border on each page (you will need the others to assemble the pages). Align the markings and tape or glue together.



printing plan

/ ALL SIZES



glossary

BASTE STITCH

A temporary stitch used to hold the fabric before sewing. Basting stitches are removed once the final seam is in place.

EDGE STITCH

A line of stitching done on the right side of the garment, approximately 3 mm (1/8") from the seam line or edge of the garment.

FOLDLINE

The foldline is a marking indicating the symmetry axis on a pattern piece. When cutting, the foldline of the pattern is aligned with the fold of the fabric.

MATCHING POINT

A marking on a pattern piece made to be matched to another marking on a second pattern piece.

NOTCH

There are 2 definitions of notch. A notch is a marking used on pattern pieces to help match the seams when sewing. To notch a seam is to cut into the seam allowance (mainly in curved areas), so the seam can spread and conform to the curve when turned right side out.

RIGHT SIDE

The right side of the fabric, usually meant for the outside of the garment.

SEAM ALLOWANCE

The distance between the raw edge of the fabric and the seamline. The seam allowance makes assembling two pieces of fabric together possible. It is usually hidden inside the garment.

SEAM FINISH

Seam finishes are used to prevent the raw edges of the fabric from fraying. There are many ways to finish a seam.

STAYSTITCHING

A line of stitching done approximately 7mm(1/4") from the raw edge of the fabric. This method helps prevent the fabric from stretching out of shape.

TOPSTITCHING

A line of stitching done on the right side of a garment. It is usually parallel to the seam and it can be decorative or used to reinforce a seam.

TRIM

To trim a seam is to cut off some of the seam allowance to reduce bulk in the seam.

UNDERSTITCHING

A line of stitching done on the lining or facing close to the neckline or the armhole edge to prevent said lining/facing from peeking out when wearing the garment.

WRONG SIDE

The backside of the fabric, usually meant for the inside of the garment.

sewing instructions

/ VIEW 1

BEFORE YOU START:

The seam allowances included in the pattern are 1.5 cm (5/8") unless stated otherwise in the instructions.



RIGHT SIDE OF FABRIC



WRONG SIDE OF FABRIC

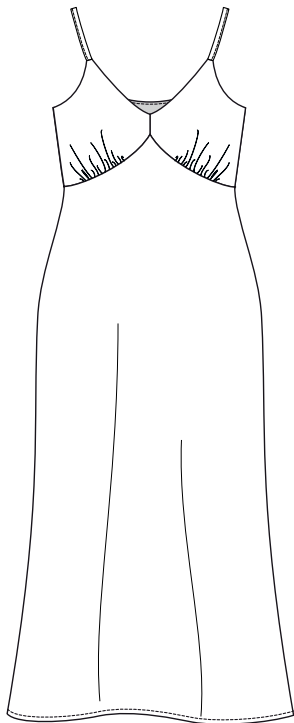


RIGHT SIDE OF LINING



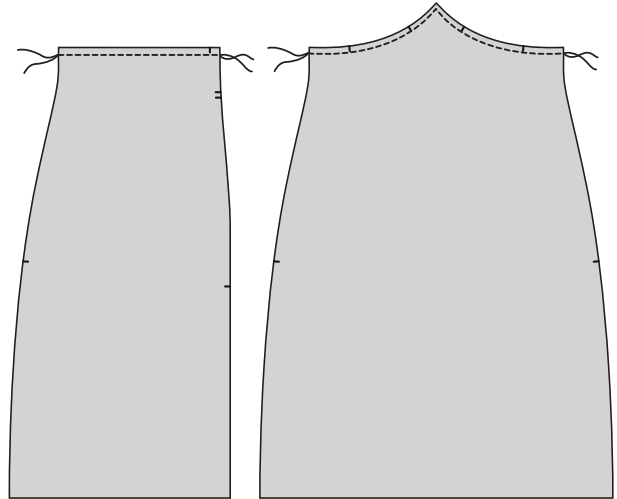
WRONG SIDE OF LINING

these are the instructions for view 1- if you're making view 2 or 3, go to page 17!



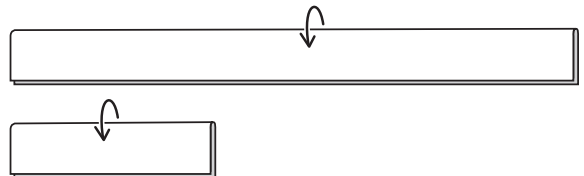
- 1 Cut all pieces and notches according to the instructions on each piece.

- 2 Since this dress is partially cut on the bias, it is **HIGHLY** recommended to either staystitch or fuse a strip of interfacing (my fave method) to the top of the front skirt (5) and back skirt (6) to avoid stretching.

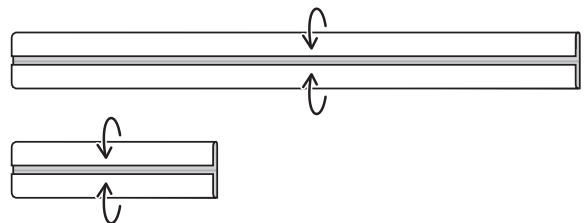


STRAPS:

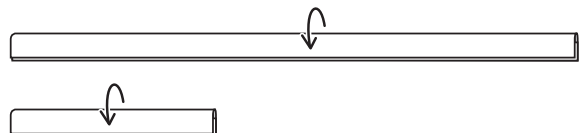
- 3 Sew the short straps (9) and long straps (10): wrong sides together, fold the straps lengthwise and press lightly.



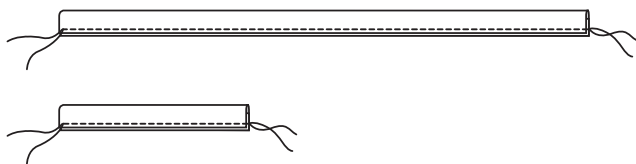
- 4 Open the ties and fold the edges inwards so they meet at the crease in the center. Press well.



- 5 Fold the ties lengthwise again, encasing the raw edges and press.



- 6 Stitch 2mm (1/16") around the folded edge to finish.

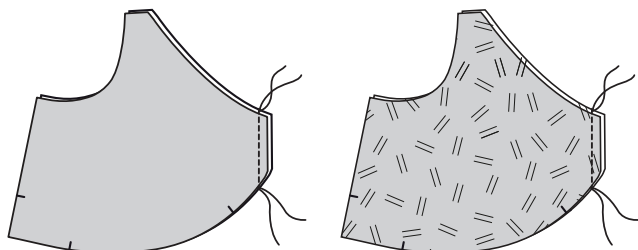


- 7 Overlock/finish one end of the long straps (10).

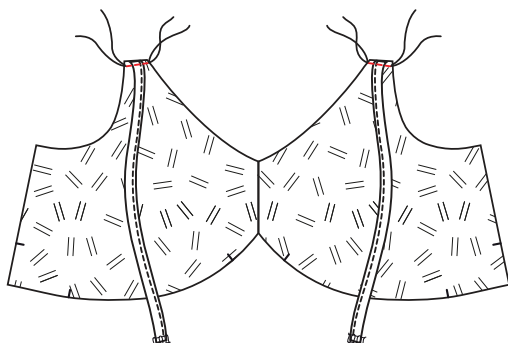


TOP:

- 8 Right sides together, stitch 1.5cm (5/8") the upper front (2) down the center. Press the seam open. Repeat for the lining.



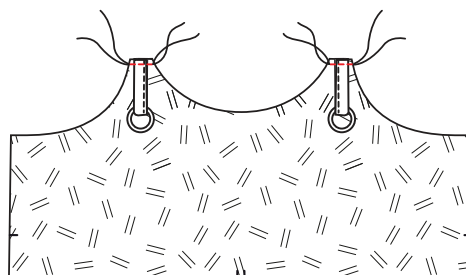
- 9 On the upper front (2) lining, baste stitch the long straps (10) with the finished end being the free one.



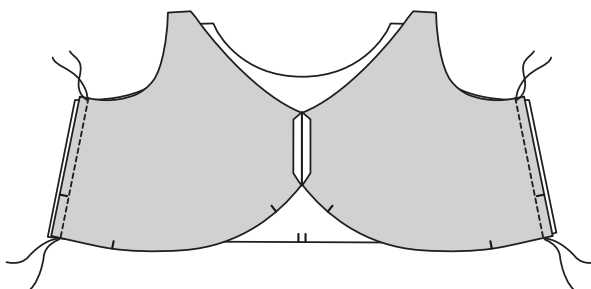
- 10 Put the ring from the strap kit through the short straps (9) and fold in half.



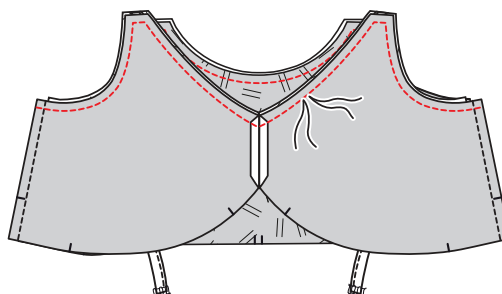
- 11 Baste stitch the short straps (9) to the upper back (4) lining.



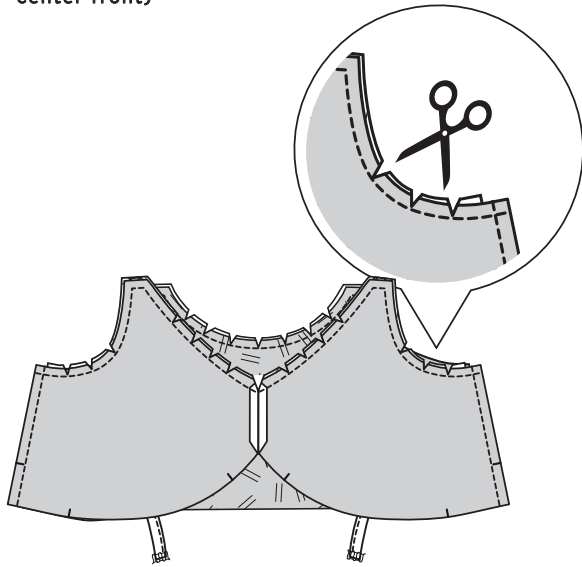
- 12 Right sides together, stitch 1.5cm (5/8") the upper front (2) and upper back (4) pieces together at the side seam. Press the seam open. Repeat steps for the lining.



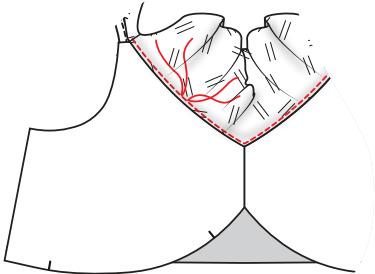
- 13 Right sides together, stitch 1.5cm (5/8") the main fabric and lining together around the neckline – make sure the straps are out of the way.



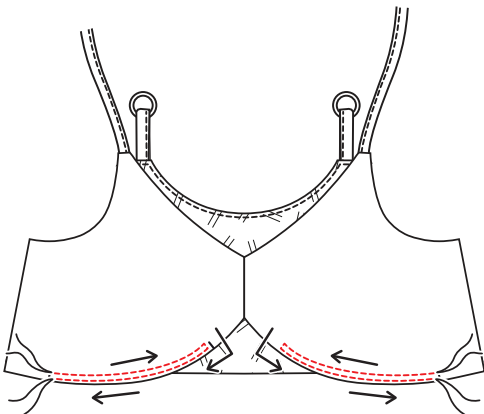
- 14** Clip in the seam around the neckline (don't forget the center front)



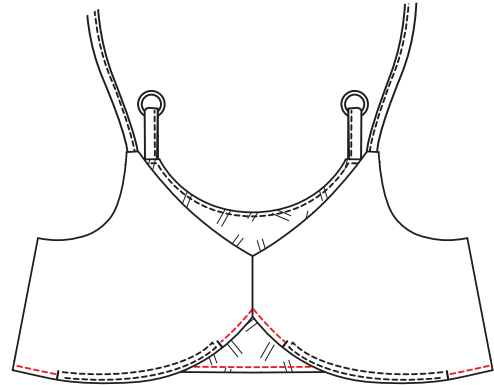
- 15** Turn right side out and understitch around the neckline. Press well.



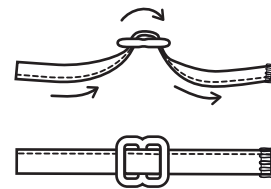
- 16** At the bottom of the upper front (2), make 2 rows of gathering stitches in between the notches, making sure to catch the main and lining.



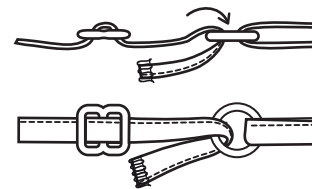
- 17** Baste stitch the rest of the bottom upper front (2) and upper back (4) to the lining.



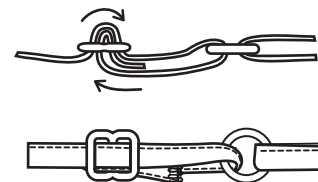
- 18** Using the slider from the strap kit, pull the long strap (10) through one opening, over the middle bar and through the other opening.



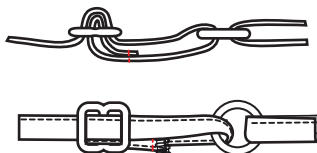
- 19** Next, pull the long strap (10) through the ring already attached to the short strap (9).



- 20** Pull the long strap (10) through the slider a second time, in the same way and direction as the first pass.

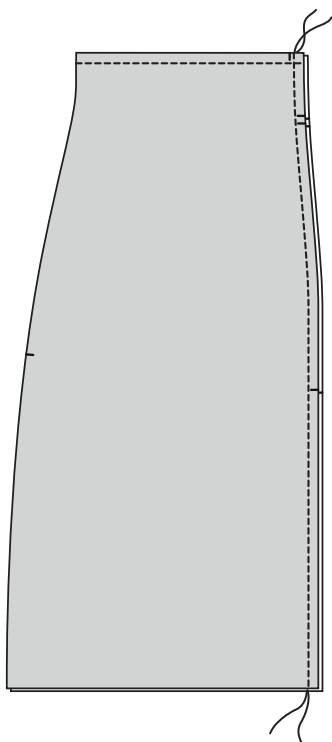


- 21 Once through the slider, stitch the end of the strap to itself, creating a loop. Backstitch to make sure it's secure.

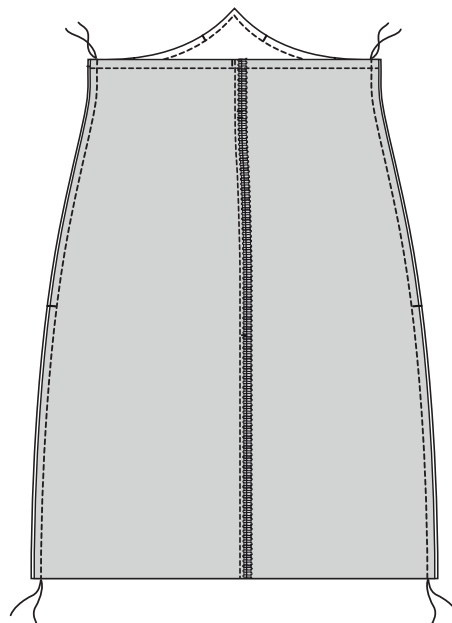


SKIRT:

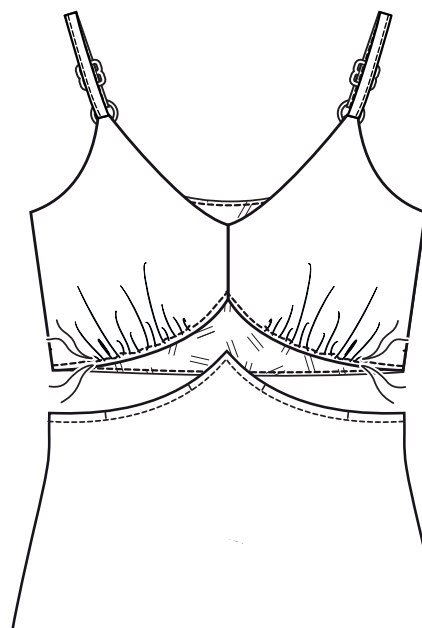
- 22 Right sides together, stitch 1.5cm (5/8") the back skirts (6) together at the center seam. Overlock/finish the seam and press towards either side.



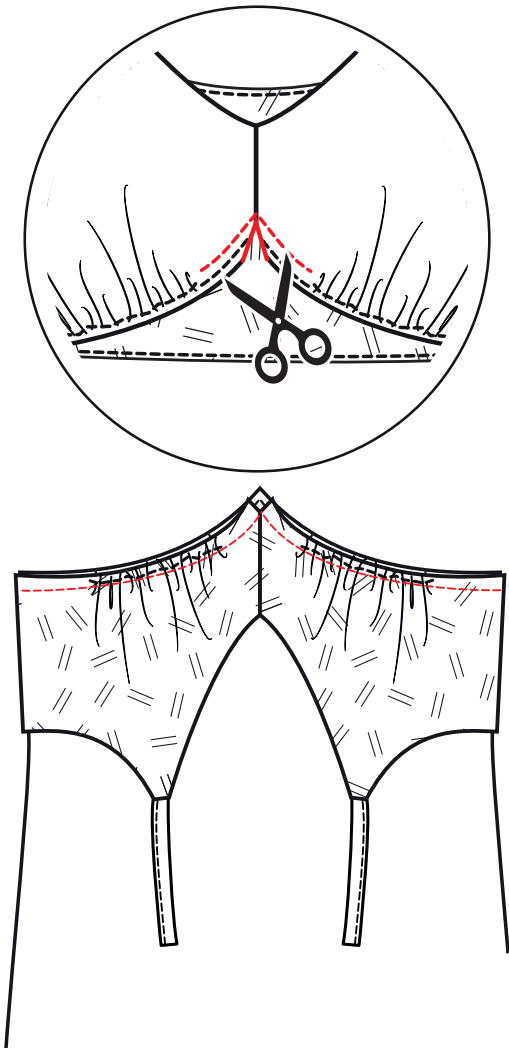
- 23 Right sides together, stitch 1.5cm (5/8") the front skirt (5) and back skirt (6) together at the side seam. Finish/overlock the seams and press towards the back.



- 24 Pull on the gathering threads on the upper front (2) until it matches the notches on the front skirt (5).

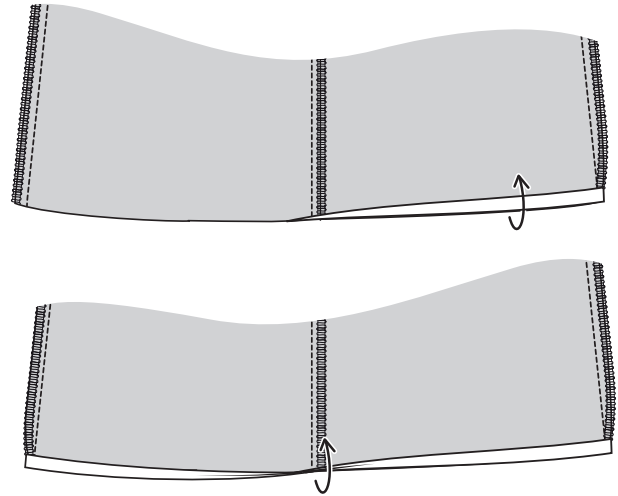


- 25** Right sides together, stitch 1.5cm (5/8") the top to the skirt. Since the center front can be challenging to sew, it's possible to do a basting stitch 1.5cm (5/8") on the upper front center and notch in the seam before sewing it to the skirt. Finish/overlock the seam and press towards the hem.

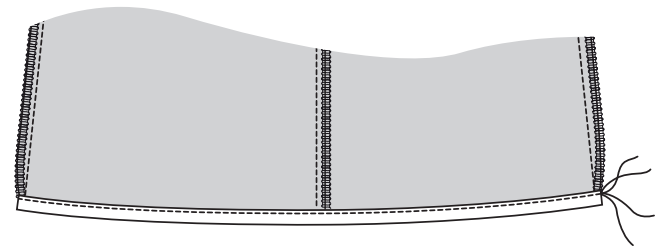


- 26** Because the skirt is cut on the bias, it is recommended to hang the dress 24hrs before hemming. That way if one side stretches out more, you can cut the excess fabric to even the bottom.

- 27** Fold the hem 6mm (1/4") twice over to the wrong side. Press well.



- 28** Stitch 2mm (1/16") from the folded edge to finish.



Voilà, your Cove slip dress is done- Congrats!

Don't forget to tag us on Instagram **@les.perlines** and use the hashtag **#coveslipdress** !

sewing instructions

/ VIEW 2 AND 3

BEFORE YOU START:

The seam allowances included in the pattern are 1.5 cm (5/8") unless stated otherwise in the instructions.



RIGHT SIDE OF FABRIC



WRONG SIDE OF FABRIC

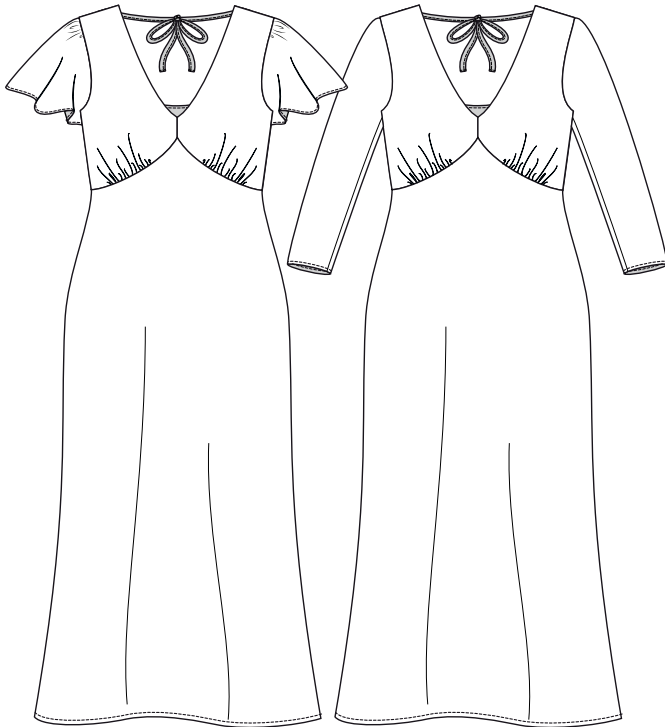


RIGHT SIDE OF LINING



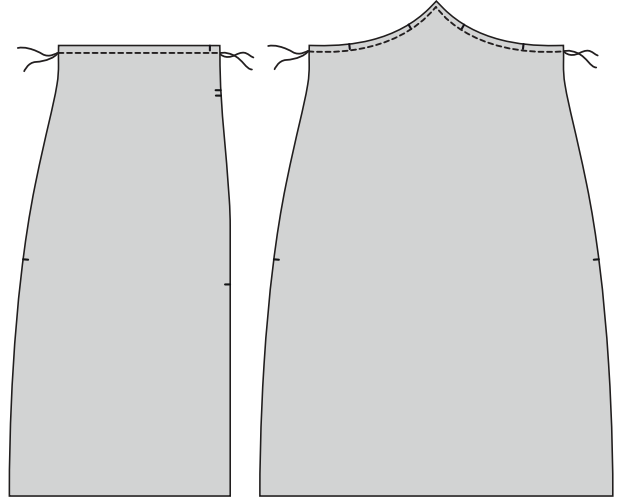
WRONG SIDE OF LINING

These are the instructions for view 2 and 3- if you're making view 1, go to page 12!



- 1 Cut all pieces and notches according to the instructions on each piece.

- 2 Since this dress is partially cut on the bias, it is **HIGHLY** recommended to either staystitch or fuse a strip of interfacing (my fave method) to the top of the front skirt (5) and back skirt (6) to avoid stretching.



BACK TIES:

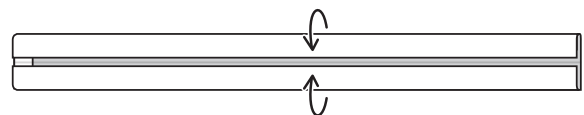
- 3 Make the back ties (11): start with folding one short end 1cm (3/8") to the wrong side. Press well.



- 4 Wrong sides together, fold the ties lengthwise and press lightly.



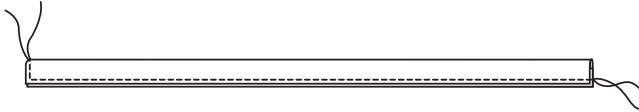
- 5 Open the ties and fold the edges inwards so they meet at the crease in the center. Press well.



- 6 Fold the ties lengthwise again, encasing the raw edges and press.

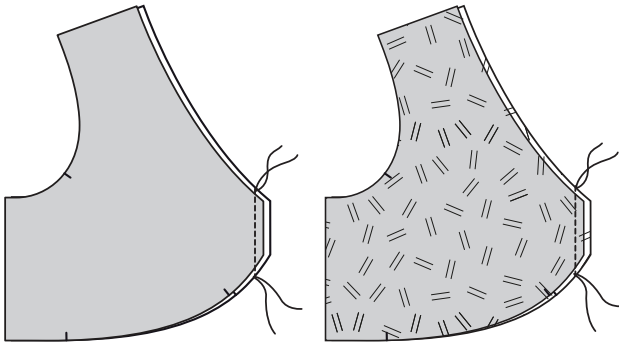


- 7 Stitch 2mm (1/16") around the folded edges to finish (don't forget to stitch the short end too!).

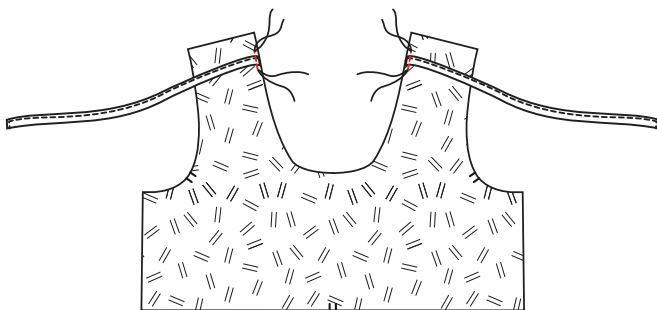


TOP:

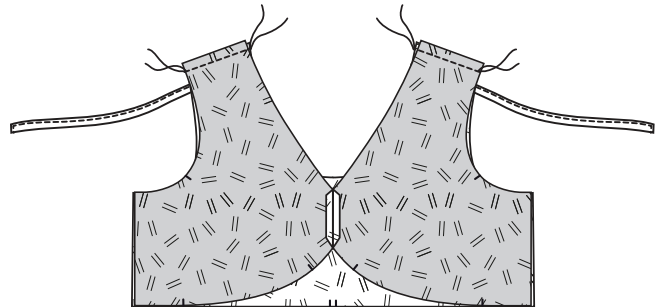
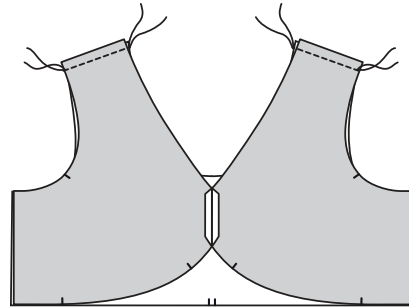
- 8 Right sides together, stitch 1.5cm (5/8") the upper front (1) down the center. Press the seam open. Repeat for the lining.



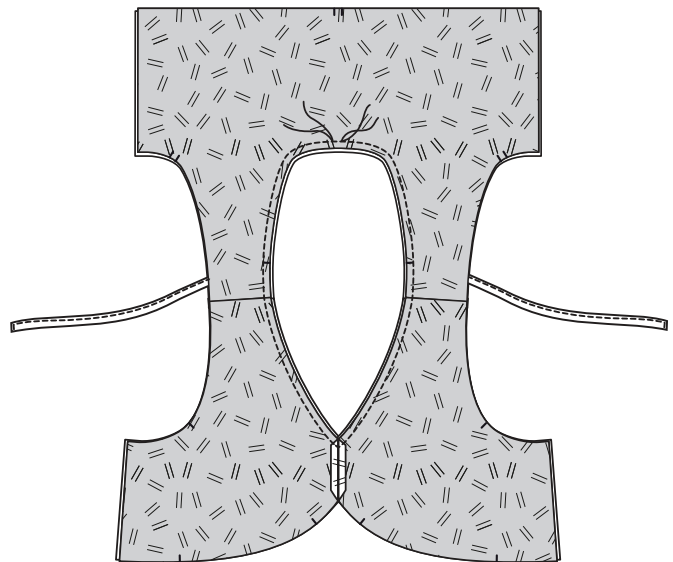
- 9 On the upper back lining (3), baste stitch the back ties where the notches are.



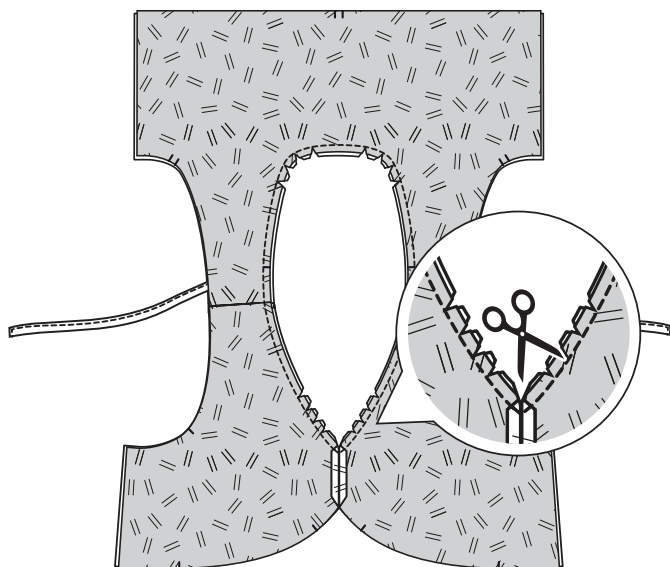
- 10 Right sides together, stitch 1.5cm (5/8") the upper front (1) and upper back (3) at the shoulder seam. Press the seam open. Repeat for the lining.



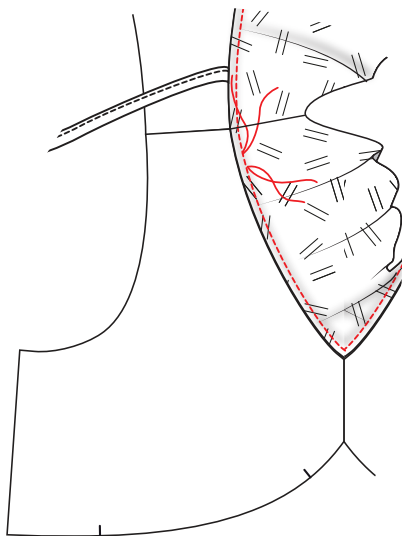
- 11 Right sides together, stitch 1.5cm (5/8") the main fabric and lining together around the neckline – make sure the ties are out of the way.



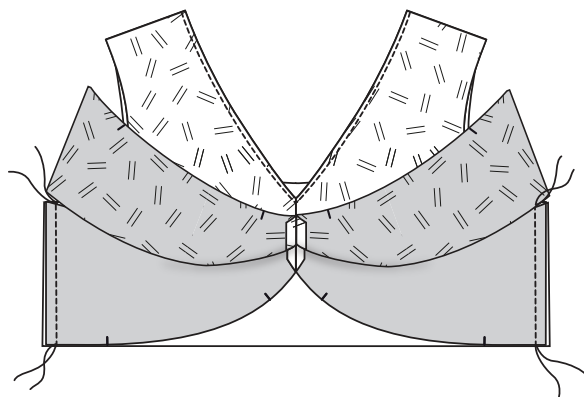
- 12** Clip in the seam around the neckline (don't forget the center front)



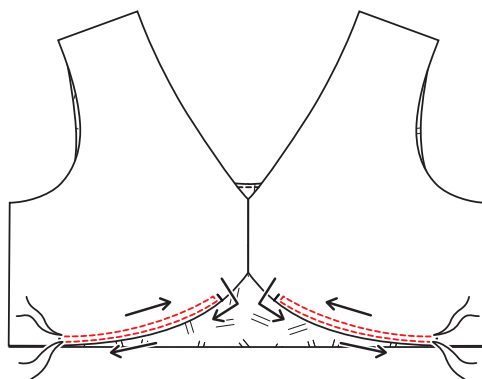
- 13** Turn right side out and understitch the lining around the neckline. Press well.



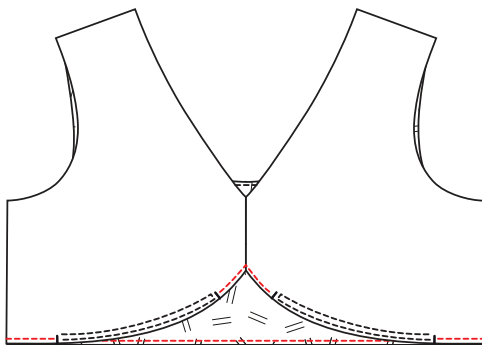
- 14** Right sides together, stitch 1.5cm (5/8") the upper front (1) and upper back (3) pieces together at the side seam. Press the seam open. Repeat steps for the lining.



- 15** At the bottom of the upper front (1), make 2 rows of gathering stitches in between the notches, making sure to catch the main and lining.

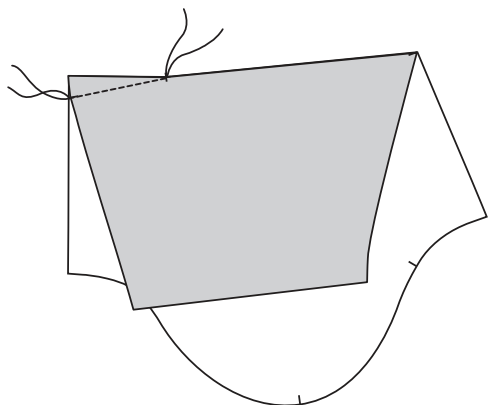


- 16** Baste stitch the rest of the bottom upper front (1) and upper back (3) to the lining.

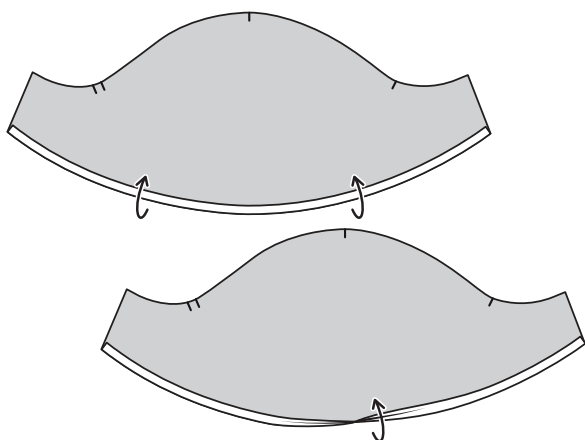
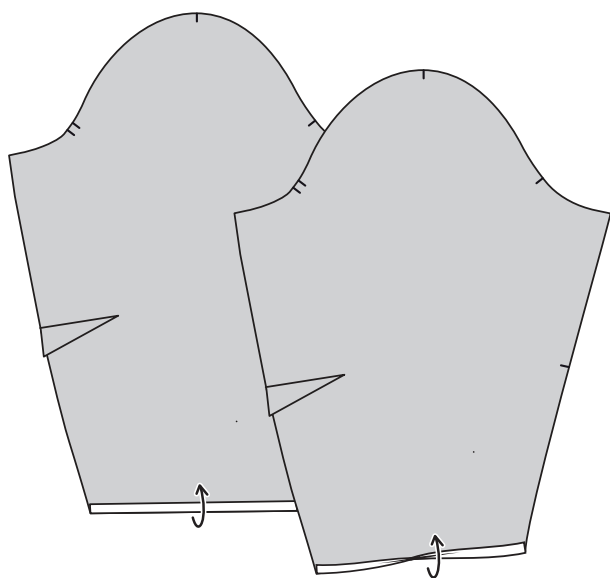


SLEEVE:

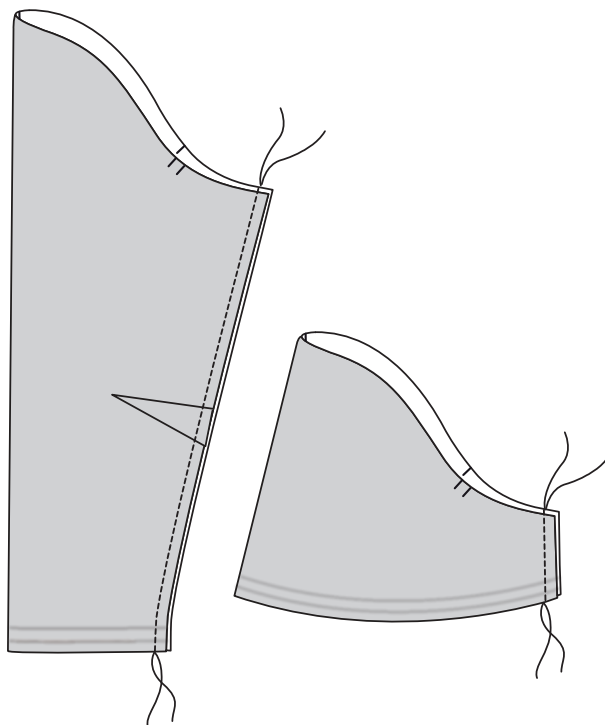
- 17 If you are making the long sleeve (7), start by sewing the dart at the elbow.



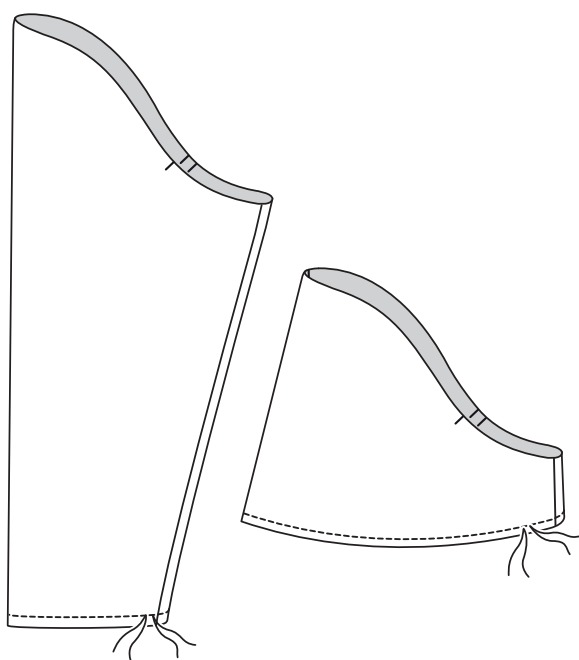
- 18 Next, let's prep the hem: fold the hem 6mm (1/4") twice over to the wrong side. Press well.



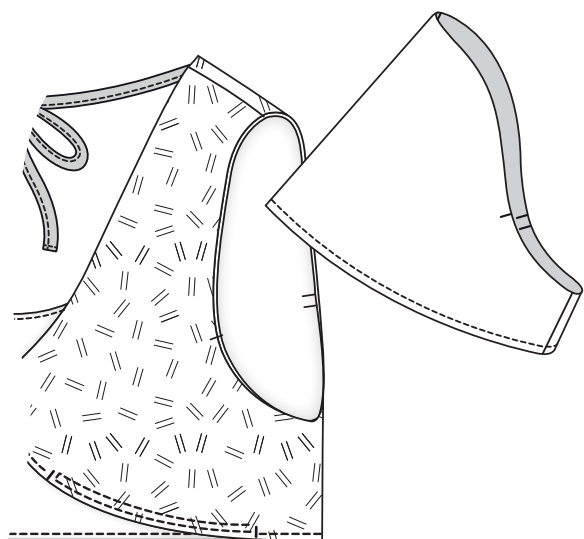
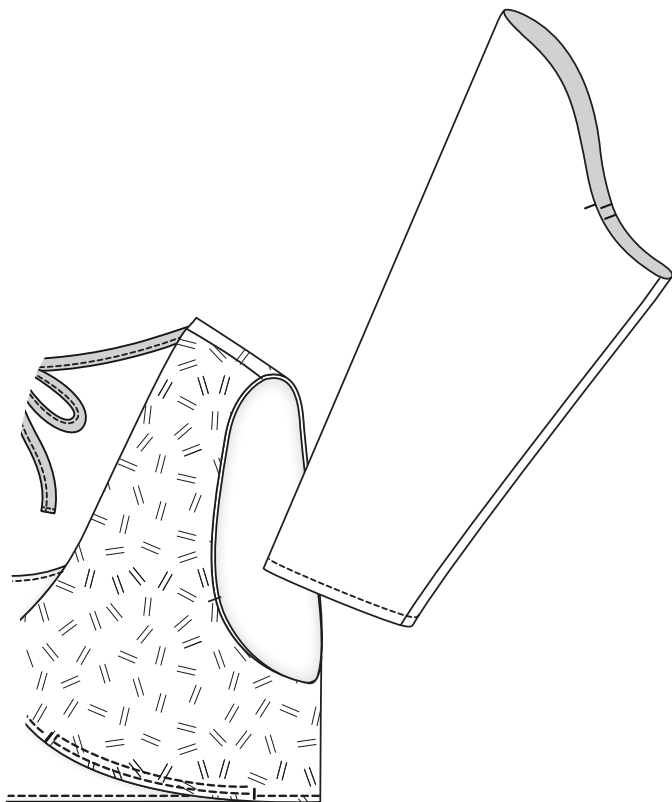
- 19 Now, unfolding the hem and right sides together, stitch 1.5cm (5/8") the sides of the short (8) or long (7) sleeve. Overlock/finish the seam and press towards the back.



- 20 Re-fold the hem and stitch 2mm (1/16") around the edge to finish.

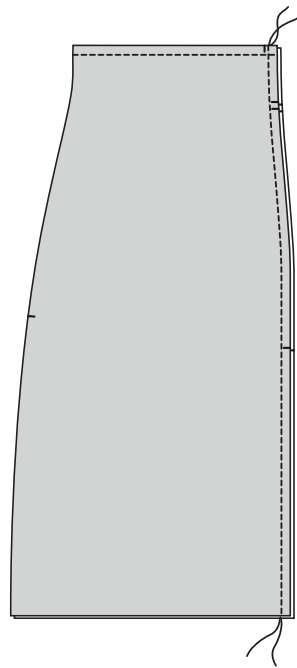


- 21** Right sides together, insert the sleeve into the bodice and pin. Stitch 1.5cm (5/8") the sleeve to the bodice. Overlock/finish the seam and press towards the bodice.



SKIRT:

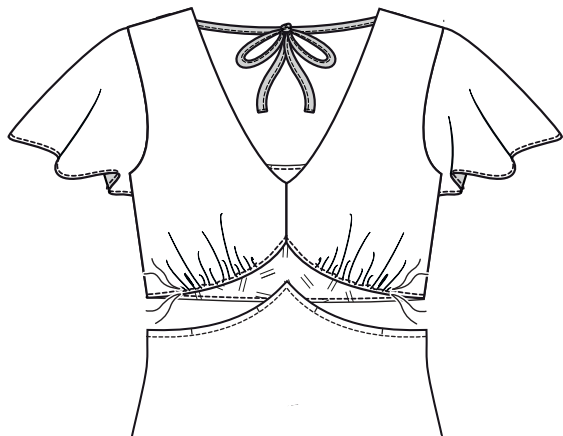
- 22** Right sides together, stitch 1.5cm (5/8") the back skirts (6) together at the center seam. Overlock/finish the seam and press towards either side.



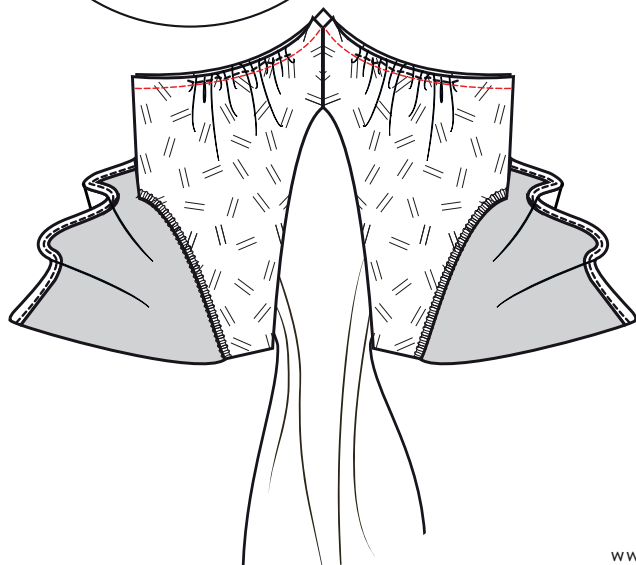
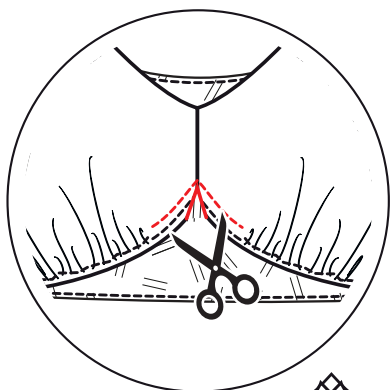
- 23** Right sides together, stitch 1.5cm (5/8") the front skirt (5) and back skirt (6) together at the side seam. Finish/overlock the seams and press towards the back.



- 24** Pull on the gathering threads on the upper front (1) until it matches the notches on the front skirt (5).

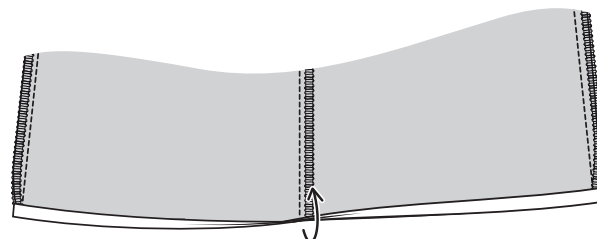
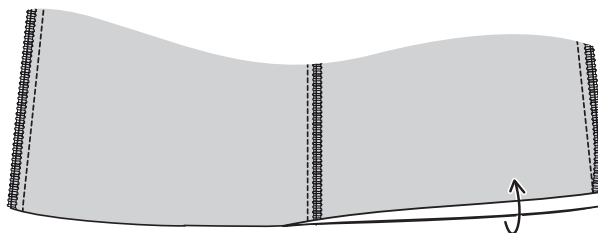


- 25** Right sides together, stitch 1.5cm (5/8") the top to the skirt. Since the center front can be challenging to sew, it's possible to do a basting stitch 1.5cm (5/8") on the upper front center and notch in the seam before sewing it to the skirt. Finish/overlock the seam and press towards the hem.

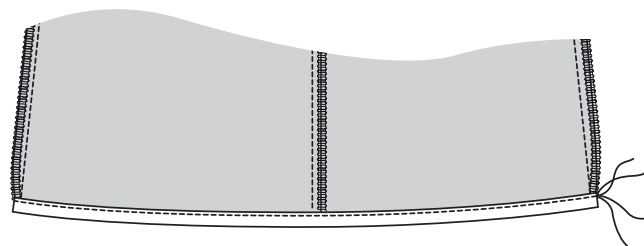


- 26** Because the skirt is cut on the bias, it is recommended to hang the dress 24hrs before hemming. That way if one side stretches out more, you can cut the excess fabric to even the bottom.

- 27** Fold the hem 6mm (1/4") twice over to the wrong side. Press well.



- 28** Stitch 2mm (1/16") from the folded edge to finish.



Voilà, your Cove slip dress is done- Congrats!

Don't forget to tag us on Instagram **@les.perlines** and use the hashtag **#coveslipdress** !